

Advantage^{PLUS}

EXCEPTIONAL DESIGN, OUTSTANDING VALUE



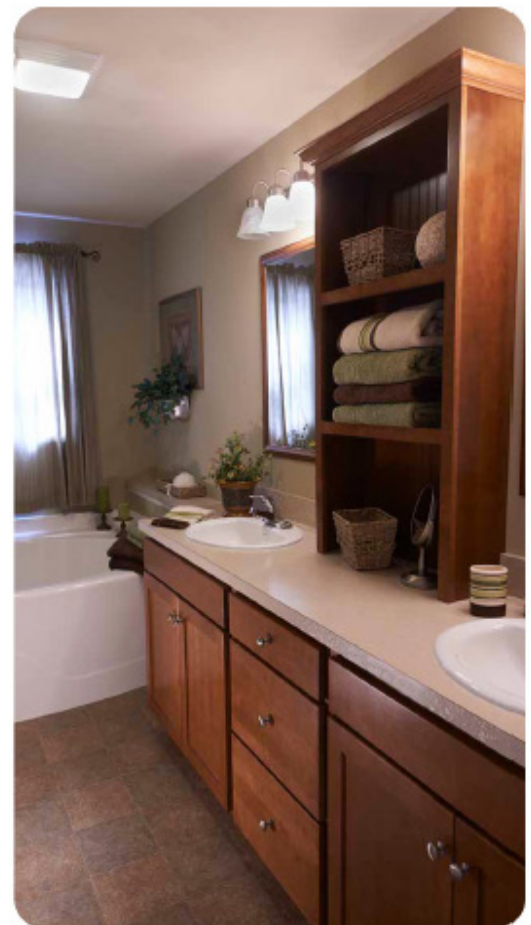
Ritz-Craft
CUSTOM HOMES

A Collection of value designed Ranch and Cape Cod plans

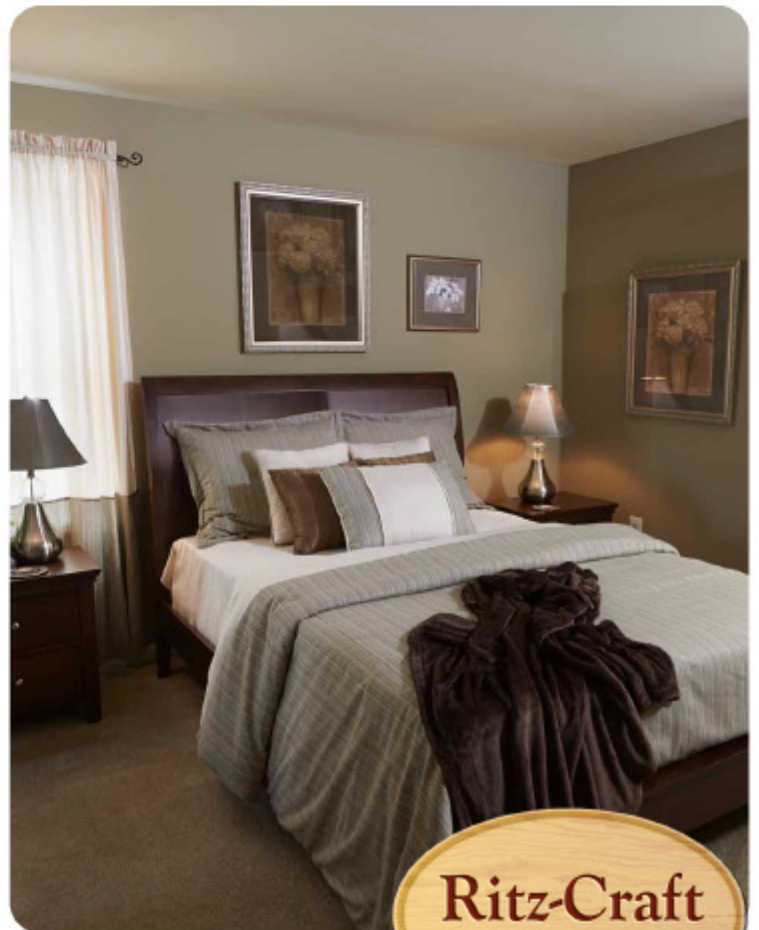
Advantage^{PLUS}

EXCEPTIONAL DESIGN, OUTSTANDING VALUE

- Economical, value-engineered designs
- High quality brands and features included
- Legacy Crafted Cabinets are included with a broad selection of optional finishes



Photos may include optional features



Photos may include optional features

Advantage PLUS

EXCEPTIONAL DESIGN, OUTSTANDING VALUE

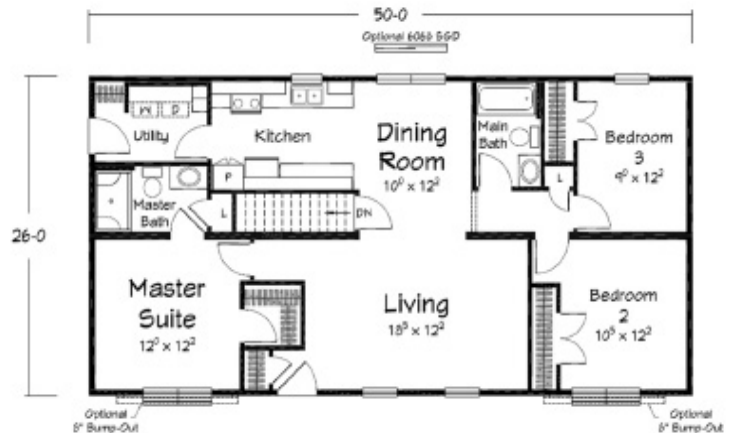
Renderings are shown with optional or site built porches and optional front elevation bump-outs.

AP46BP
26' X 46' Ranch
1,196 sq. ft.
3 bedrooms
2 baths



AP48BP
26' X 48' Ranch
1,248 sq. ft.
3 bedrooms
2 baths

AP50BBP
26' X 50' Ranch
1,300 sq. ft.
3 bedrooms
2 baths



AP52BP
26' X 52' Ranch
1,352 sq. ft.
3 bedrooms
2 baths

Ritz-Craft
CUSTOM HOMES

Artist's renderings depict homes as they may be built on a typical site. Renderings may include optional or site installed features. Refer to Ritz-Craft's Advantage specifications and be sure to thoroughly discuss all aspects of your building project with your selected homebuilder.

Advantage PLUS

EXCEPTIONAL DESIGN, OUTSTANDING VALUE

Renderings are shown with optional or site built porches and optional front elevation bump-outs.

AP54BP
26' x 54' Ranch
1,404 sq. ft.
3 bedrooms
2 baths



AP56BP
26' X 56' Ranch
1,456 sq. ft.
3 bedrooms
2 baths

AP58ABP
26' X 58' Ranch A
1,508 sq. ft.
3 bedrooms
2 baths



AP58BBP
26' X 58' Ranch B
1,508 sq. ft.
3 bedrooms
2 baths

Ritz-Craft
CUSTOM HOMES

Artist's renderings depict homes as they may be built on a typical site. Renderings may include optional or site installed features. Refer to Ritz-Craft's Advantage specifications and be sure to thoroughly discuss all aspects of your building project with your selected homebuilder.

Advantage PLUS

EXCEPTIONAL DESIGN, OUTSTANDING VALUE

Renderings are shown with optional or site built porches and optional front elevation bump-outs.

AP60BP
 26' X 60' Ranch
 1,560 sq. ft.
 3 bedrooms
 2 baths

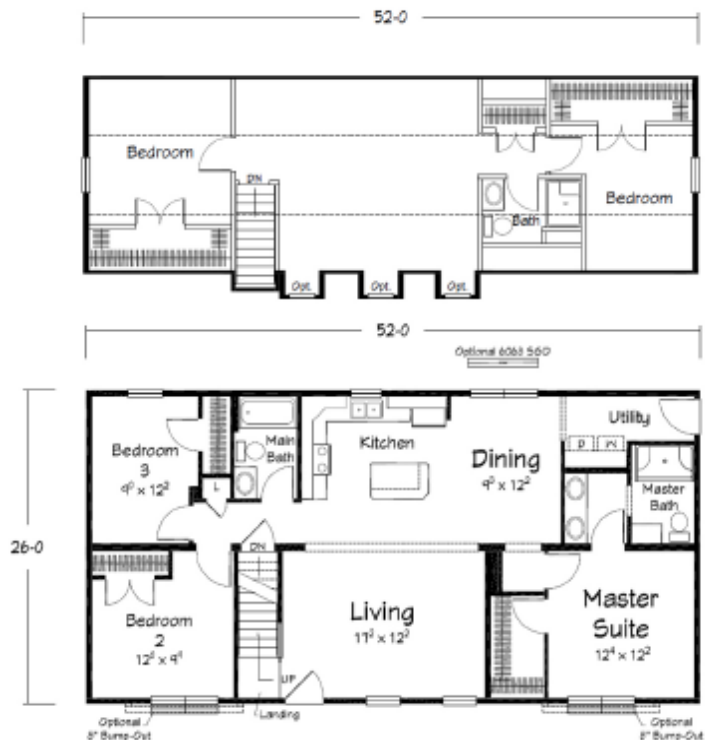


AP62BP
 26' x 62' Ranch
 1,612 sq. ft.
 3 bedrooms
 2 baths



AP52CBP
 26' X 52' Cape Cod
 1,352sq. ft.
 3 bedrooms
 2 baths

860 sq. ft. proposed upper level (approx.)



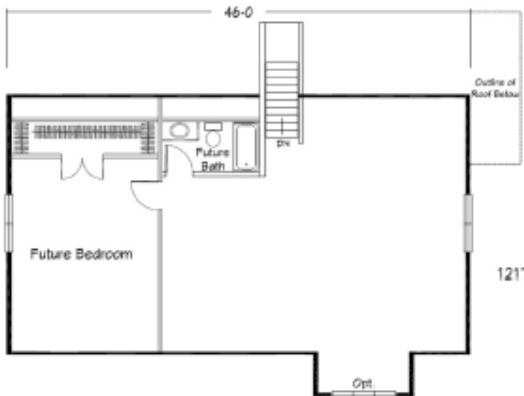
Ritz-Craft
 CUSTOM HOMES

Artist's renderings depict homes as they may be built on a typical site. Renderings may include optional or site installed features. Refer to Ritz-Craft's Advantage specifications and be sure to thoroughly discuss all aspects of your building project with your selected homebuilder.

Advantage PLUS

EXCEPTIONAL DESIGN, OUTSTANDING VALUE

Renderings are shown with optional or site built porches and optional front elevation bump-outs.



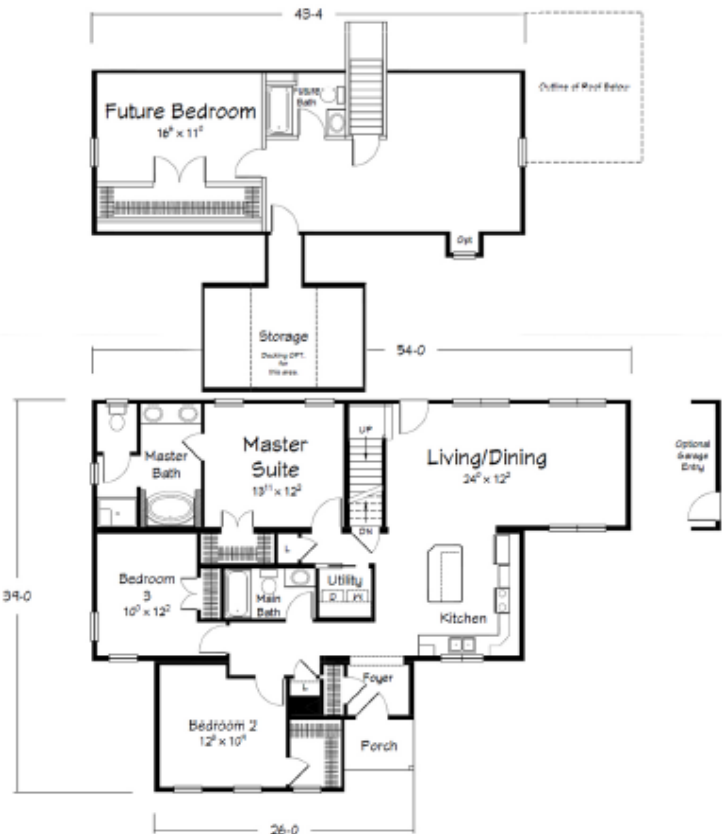
AP503MBP
 40' x 50' Cape Cod
 1,750 sq. ft.
 3 bedrooms
 2 baths

980 sq. ft. proposed upper level (approx.)



A543MBBP
 40' x 54' Cape Cod
 1,556 sq. ft.
 3 bedrooms
 2 baths

740 sq. ft. proposed upper level (approx.)



Ritz-Craft
 CUSTOM HOMES

Artist's renderings depict homes as they may be built on a typical site. Renderings may include optional or site installed features. Refer to Ritz-Craft's Advantage specifications and be sure to thoroughly discuss all aspects of your building project with your selected homebuilder.

Advantage^{PLUS}

EXCEPTIONAL DESIGN, OUTSTANDING VALUE



Your Approved Ritz-Craft Homebuilder:



Due to occasional updating of building codes and Ritz-Craft's continuous product improvement, specifications are subject to change without prior notification. Be sure to request a copy of current specifications from your selected homebuilder. ©2015 Ritz-Craft Corporation 05292015

Approved homebuilders are independent business entities and are not agents of Ritz-Craft Corporation.

