

American Dream

★ HOME COLLECTION ★



CAPE COD & TWO STORY PLANS



American Dream

★ HOME COLLECTION ★

Building a new home on land that you've chosen, and with the style and features you've always wanted, can be a very gratifying experience. After all – building a home just the way you'd like it – is a major expression of your ideas and vision.

Your new home should start with a great plan. Our American Dream catalog includes many of our most current and best designs. All of the plans can be personalized with your choice of special features and finishes or modified to embrace your own design concepts.

Whether your need is for a small and cozy cottage or for a grand, sprawling design, you've come to the right place. Our American Dream plans offer great exterior curb appeal and carefully planned interiors for lasting comfort and enjoyment.

Thank you for considering a Ritz Craft Custom Home. We look forward to making your new home the next and most important house we build.



ABOUT THIS BROCHURE:



Plan pages with this symbol are designated as CAPE COD PLANS and include a 12/12 pitch roof (unless otherwise noted) and stairs to a site finished upper level.



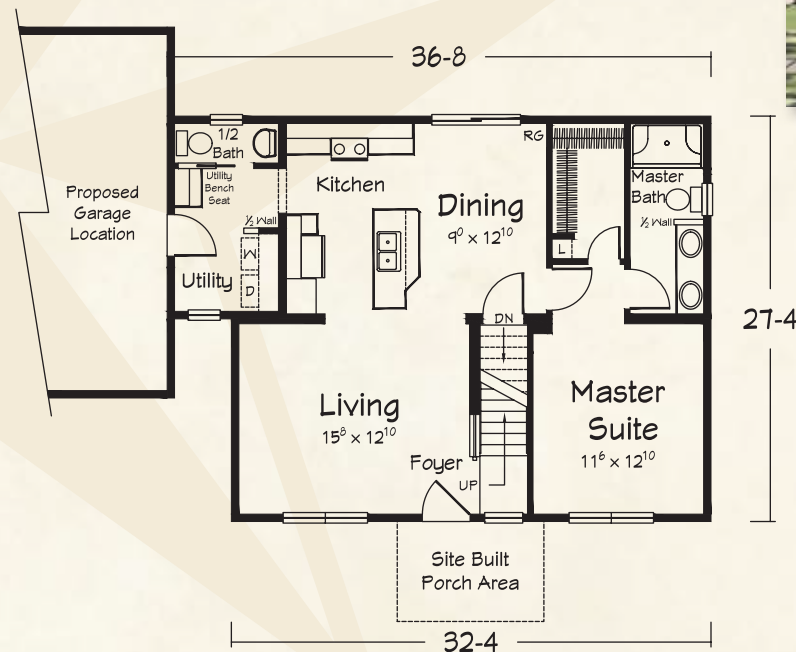
Plans with this symbol are TWO STORY PLANS which include a 7/12 pitch roof (unless otherwise noted) and finished second floor areas.

- All homes can be built for full basement or crawl space foundation.
- Site-finished upper level areas are suggested layouts only. Discuss details with your selected Ritz Craft homebuilder.
- Upper level square footage shown is approximate and can vary based on regional roof load requirements.
- Baths that show a 48" shower (only) are listed as 3/4 Bath. Baths shown with a 60" shower or combination tub/shower are listed as Full Bath.
- All roof dormers are optional unless otherwise noted on plan.

The NEW LONDON II CAPE COD PLAN



Cute, charming and functional



NEW LONDON II

948 sq. ft. Living Area

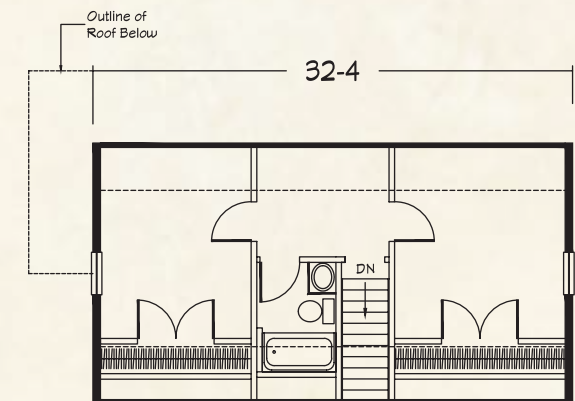
- 1 Bedroom
- 1½ Baths



Shown with site built porch

NEW LONDON II

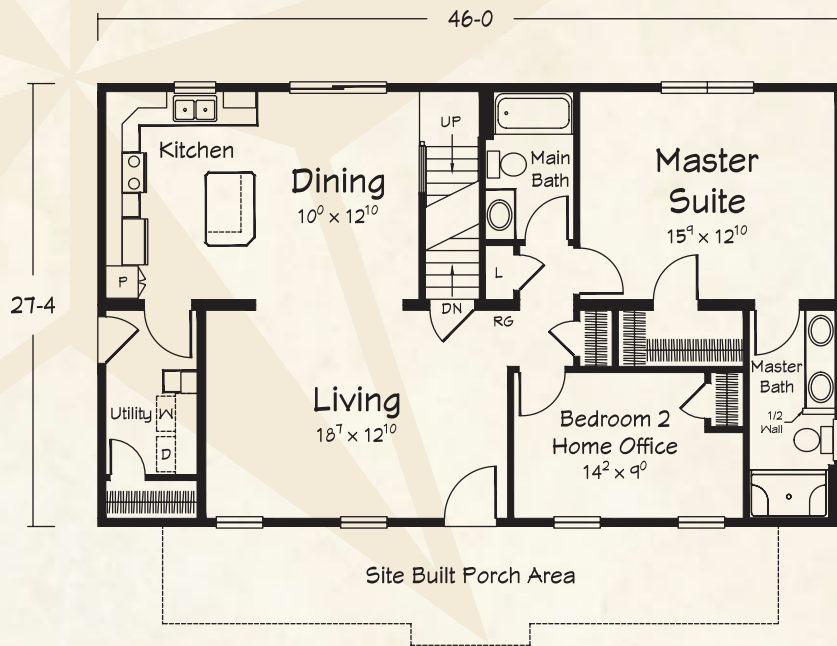
569 sq. ft. Proposed Upper Level (Approx.)



The **JAEYLYN II**
CAPE COD PLAN



*Secondary bedroom can convert
from nursery to home office*



JAEYLYN II

1257 sq. ft. Living Area

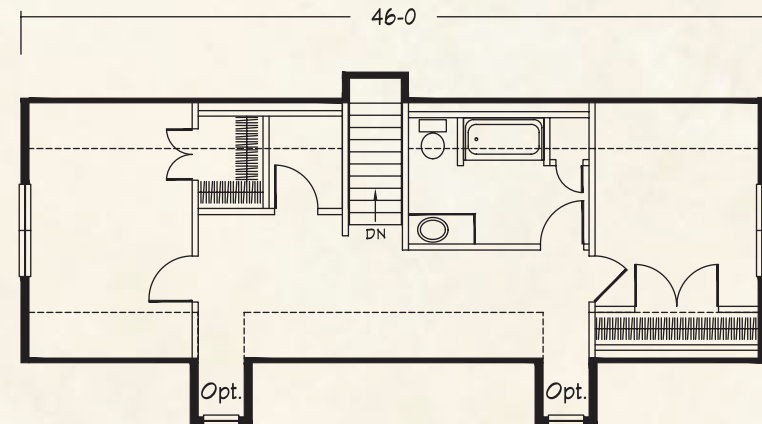
- 2 Bedrooms
- 2 Full Baths



Shown with site built porch

JAEYLYN II

755 sq. ft. Proposed Upper Level (Approx.)



The ANNABELLE II

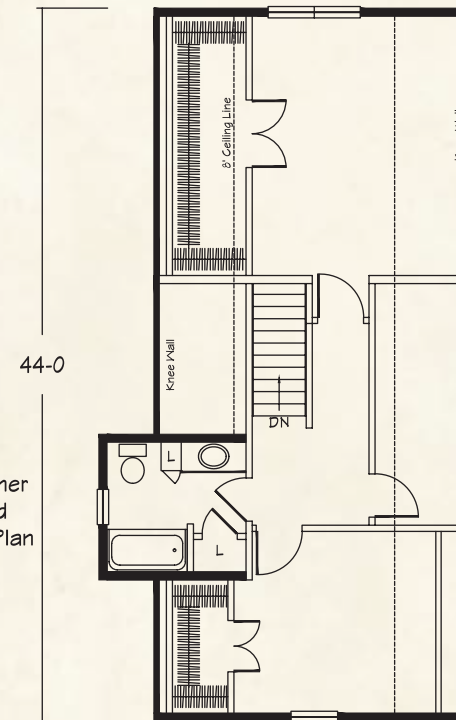
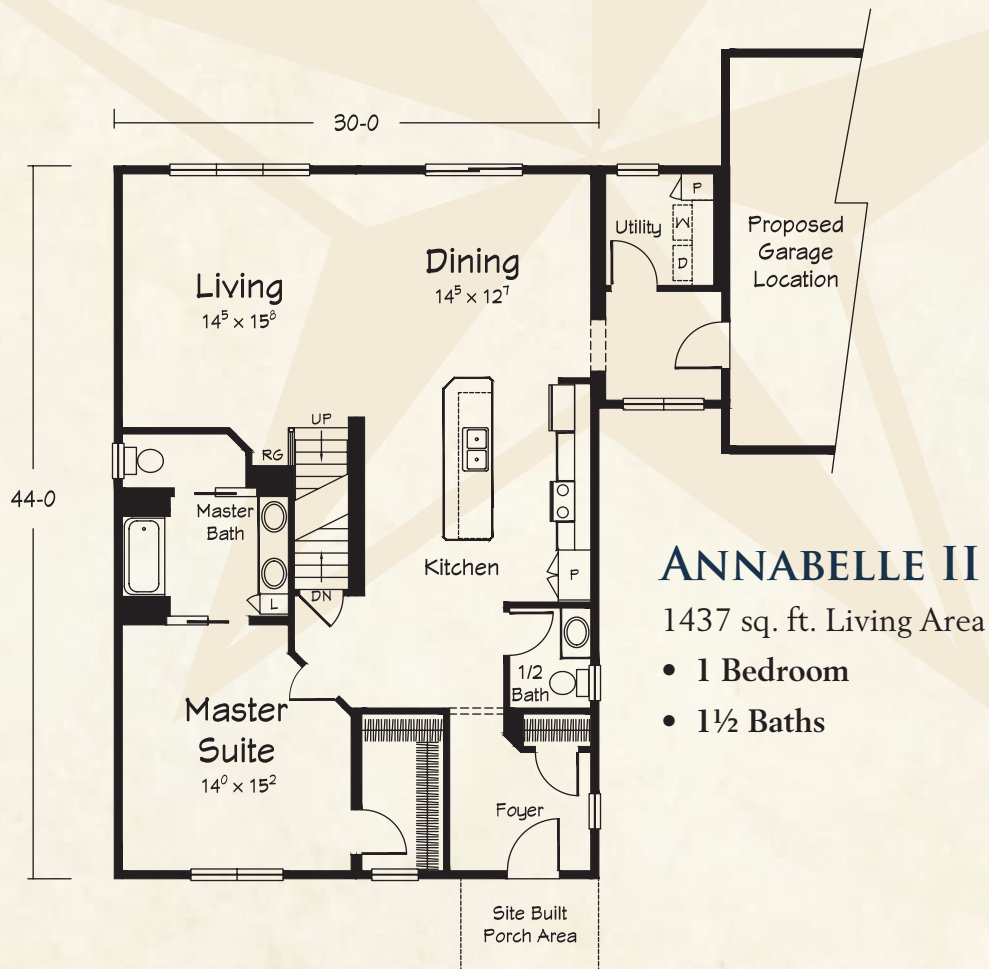
CAPE COD PLAN



Craftsman style plan for smaller homesites



Shown with site built porch and optional laundry room front entry door



ANNABELLE II

901 sq. ft. Proposed Upper Level (Approx.)

The MISTY HARBOR II

CAPE COD PLAN



Classic family plan

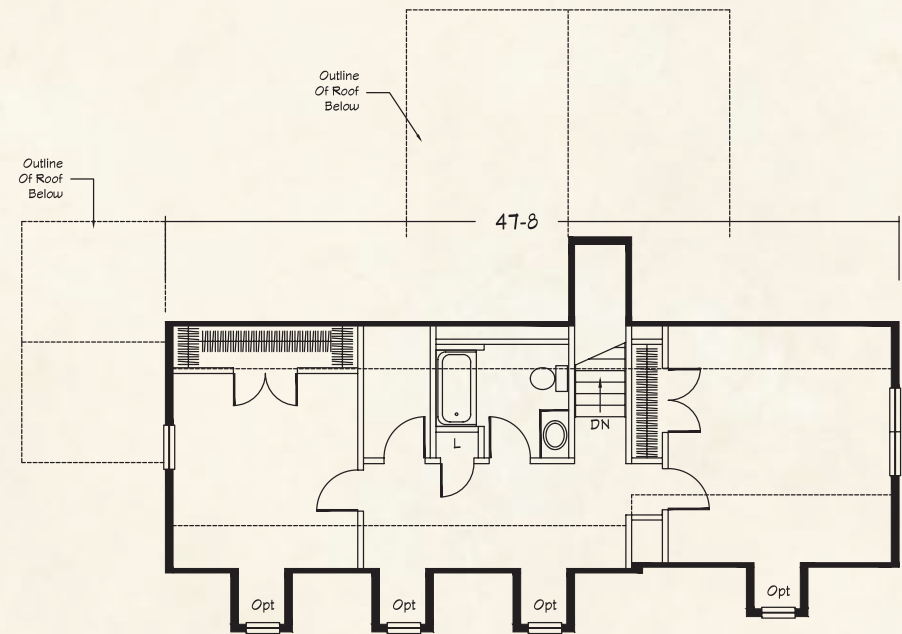
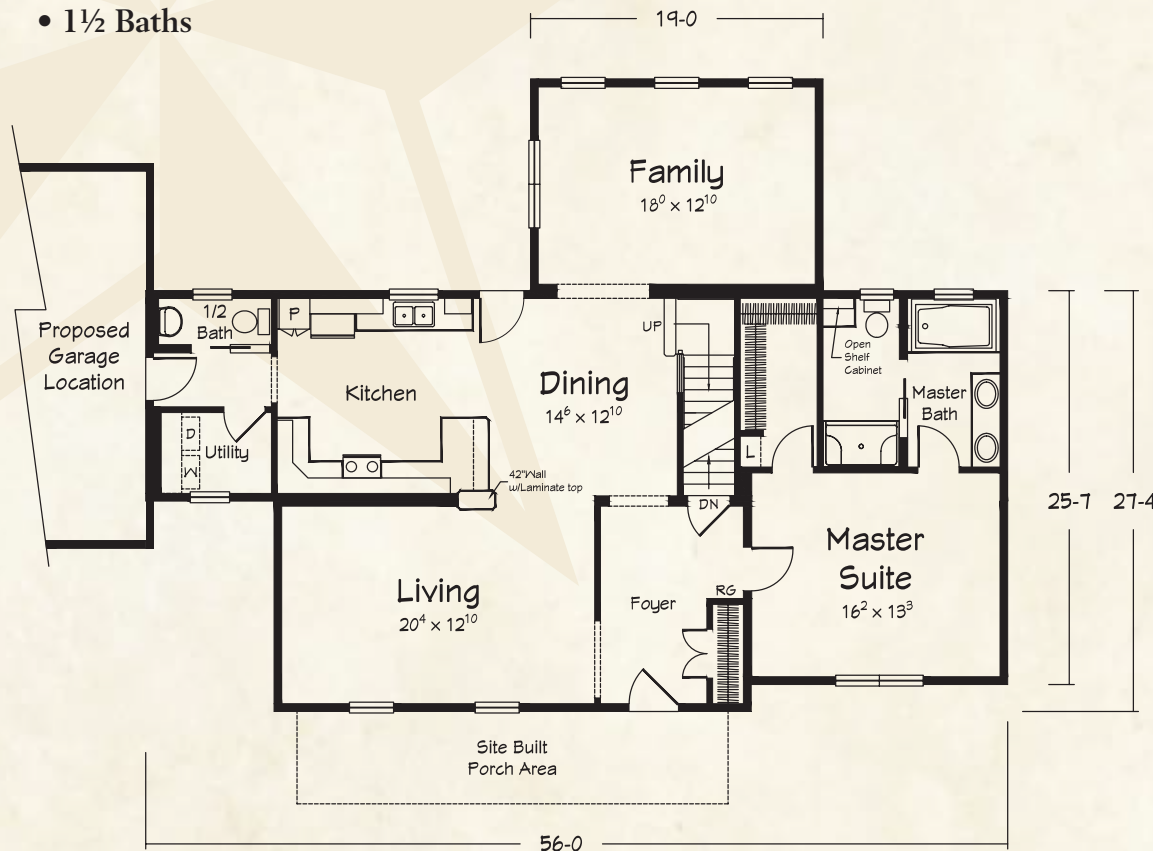


Shown with site built porch

MISTY HARBOR II

1647 sq. ft. Living Area

- 1 Bedroom
- 1½ Baths



MISTY HARBOR II

772 sq. ft. Proposed Upper Level (Approx.)

The MAGGIE VALLEY II

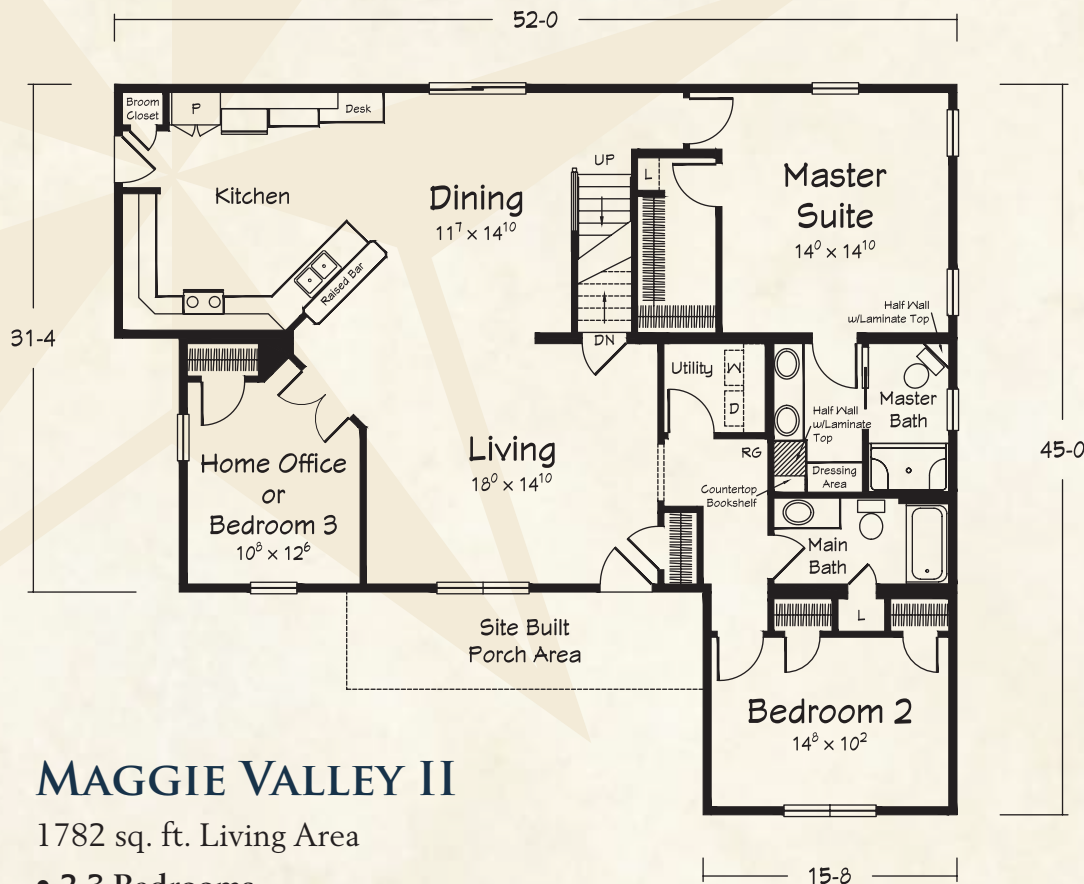
CAPE COD PLAN



Charming exterior – wide open interior



Shown with site built porch



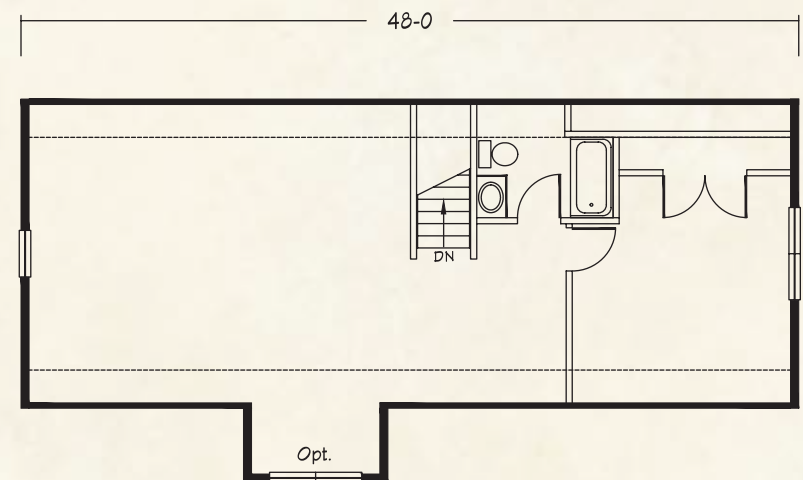
MAGGIE VALLEY II

1782 sq. ft. Living Area

- 2-3 Bedrooms
- 2 Full Baths

MAGGIE VALLEY II

916 sq. ft. Proposed Upper Level (Approx.)



The SMITHVILLE II CAPE COD PLAN



An expandable family plan

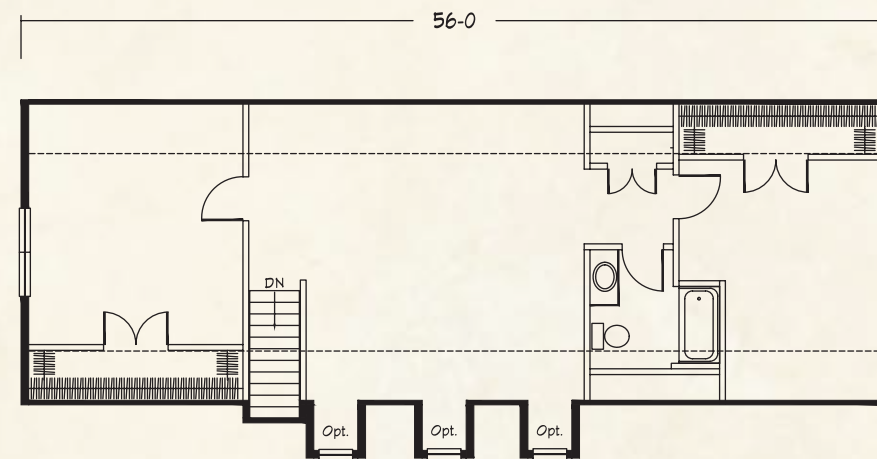
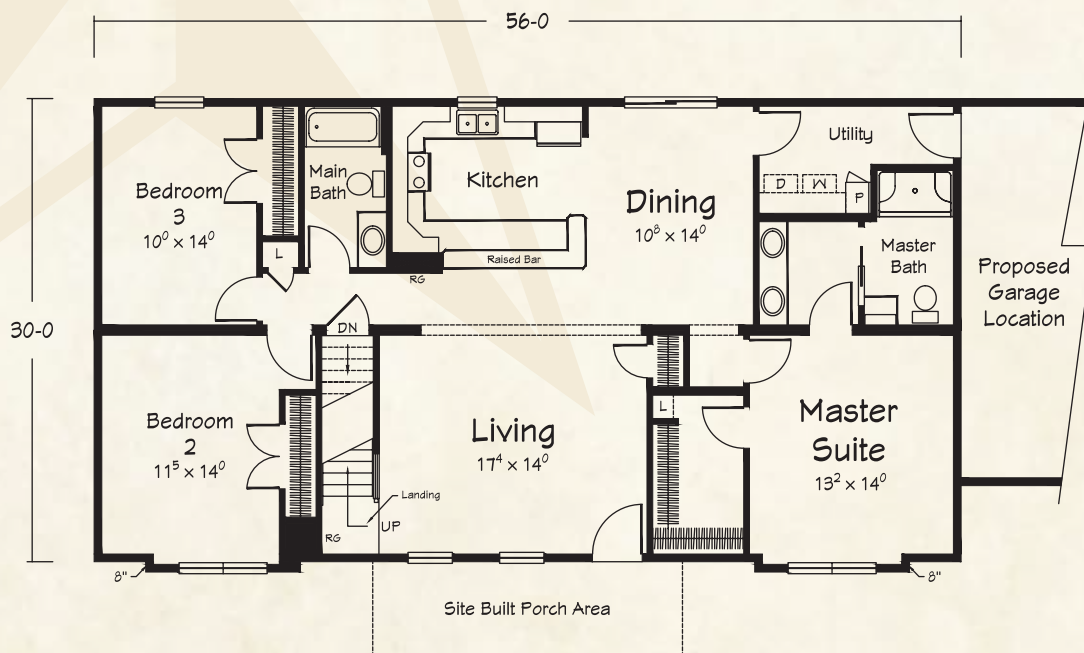


Shown with site built porch

SMITHVILLE II

1675 sq. ft. Living Area

- 3 Bedrooms
- 2 Baths



SMITHVILLE II

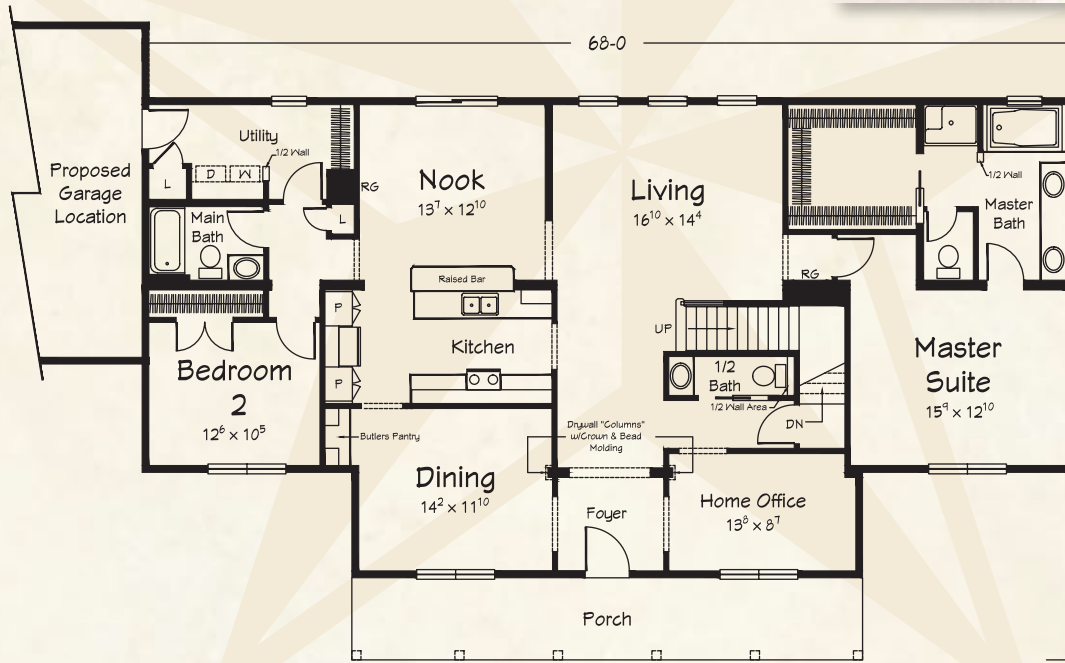
1110 sq. ft. Proposed Upper Level (Approx.)

The JAMES ISLAND II

CAPE COD PLAN



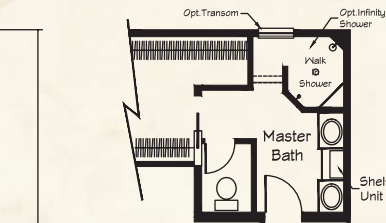
Classically styled large Cape plan



JAMES ISLAND II

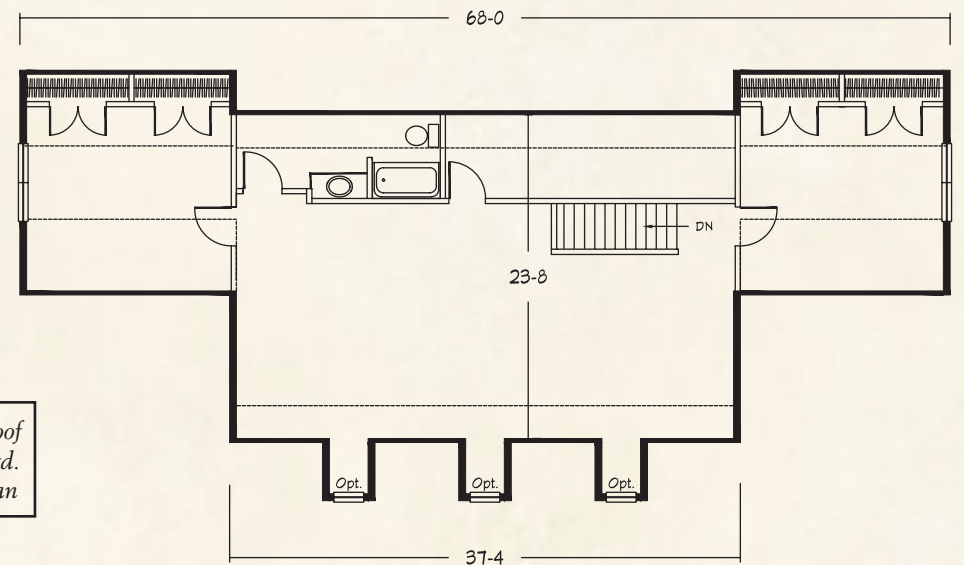
2149 sq. ft. Living Area

- 2 Bedrooms
- 2½ Baths



Optional Master Bath w/Infinity Shower and Custom Cabinetry

41-0



JAMES ISLAND II

1412 sq. ft. Proposed Upper Level (Approx.)

9/12 roof pitch std. this plan



The BRIGHTON II CAPE COD PLAN



Great plan for rear facing views

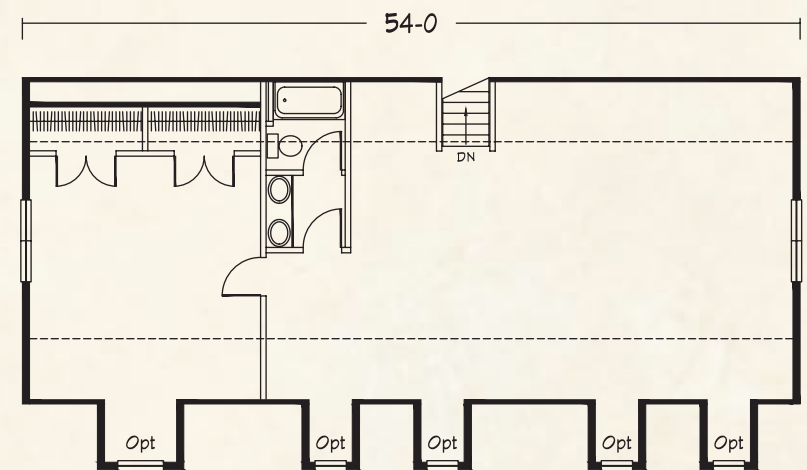
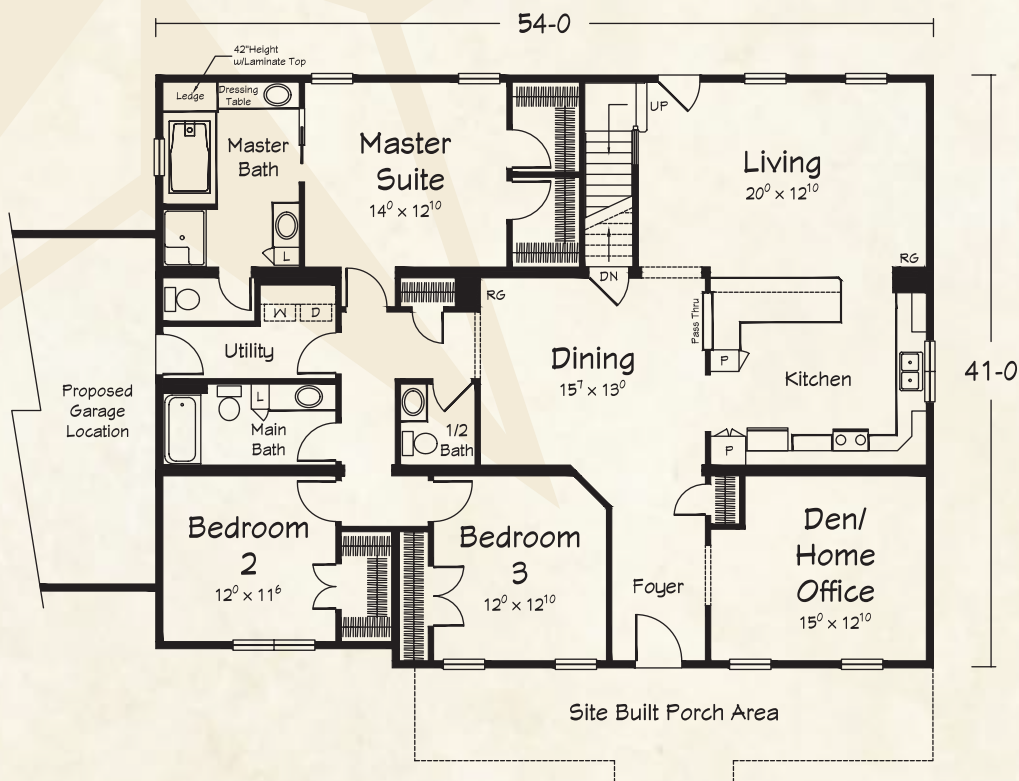


Shown with site built porch

BRIGHTON II

2200 sq. ft. First Floor Living Area

- 3 Bedrooms
- 2½ Baths



BRIGHTON II

1224 sq. ft. Proposed Upper Level (Approx.)

9/12 roof
pitch std.
this plan

The SHELTON CREEK II

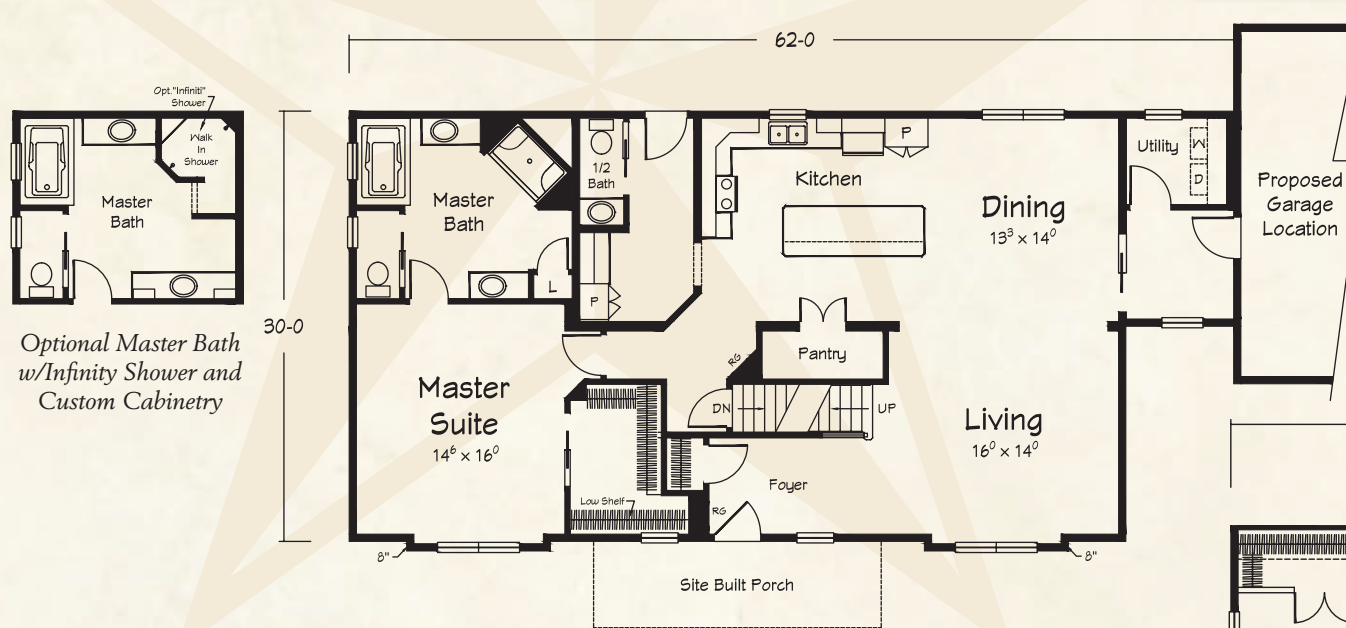
CAPE COD PLAN



Open plan with gourmet kitchen and spa-like master bath



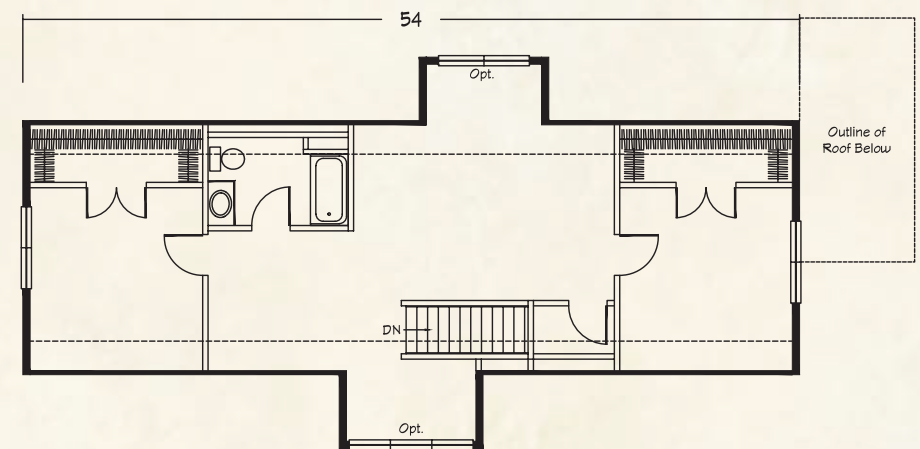
Shown with site built porch



Optional Master Bath w/Infinity Shower and Custom Cabinetry

SHELTON CREEK II

1045 sq. ft. Proposed Upper Level (Approx.)



SHELTON CREEK II

1749 sq. ft. Living Area

- 1 Bedroom
- 1½ Baths

Artist's renderings depict homes as they may be built on a typical site. Renderings may include optional or site installed features. Refer to Ritz Craft's standard "Benchmark Specifications" and be sure to thoroughly discuss all aspects of your building project with your selected homebuilder. **Unless otherwise noted, all "American Dream Home" Cape Cod and Two Story home plans include an interior stair area providing access to your full/walk-out basement. Each plan can be modified for a crawl space foundation.**



The MARBURY

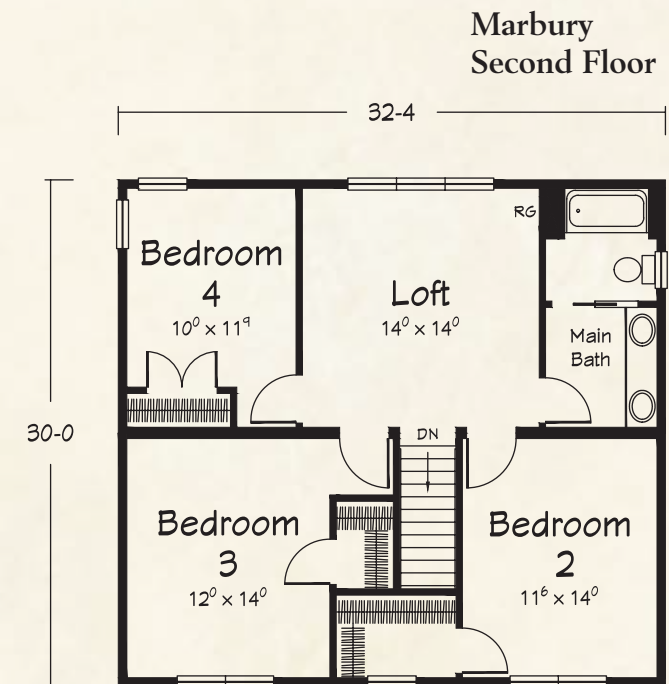
TWO STORY PLAN



Village style two story plan



Shown with site built porch



MARBURY

1033 sq. ft. First Floor Living Area
 967 sq. ft. Second Floor Living Area
 2000 sq. ft. Total

- 4 Bedrooms
- 2½ Baths

The JASMINE II AD

TWO STORY PLAN

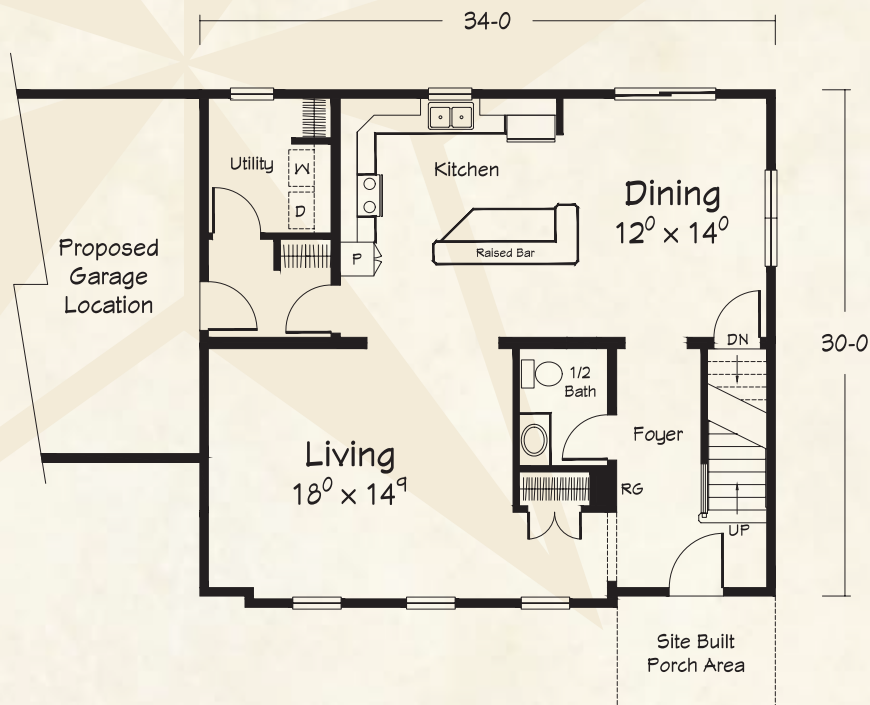


Petite Colonial

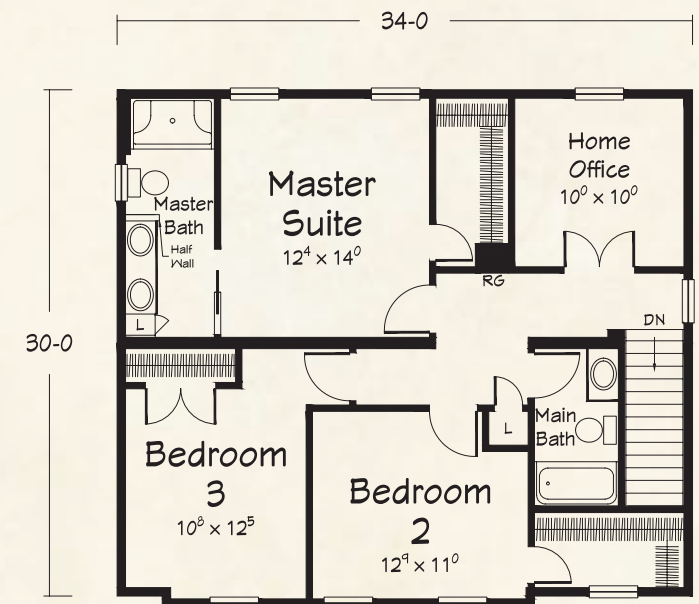


Shown with site built porch

Jasmine II AD
First Floor



Jasmine II AD
Second Floor



JASMINE II AD

1032 sq. ft. First Floor Living Area
 1032 sq. ft. Second Floor Living Area
 2064 sq. ft. Total

- 3 Bedrooms
- 2½ Baths

Artist's renderings depict homes as they may be built on a typical site. Renderings may include optional or site installed features. Refer to Ritz Craft's standard "Benchmark Specifications" and be sure to thoroughly discuss all aspects of your building project with your selected homebuilder. **Unless otherwise noted, all "American Dream Home" Cape Cod and Two Story home plans include an interior stair area providing access to your full/walk-out basement. Each plan can be modified for a crawl space foundation.**



The CRESTROCK III

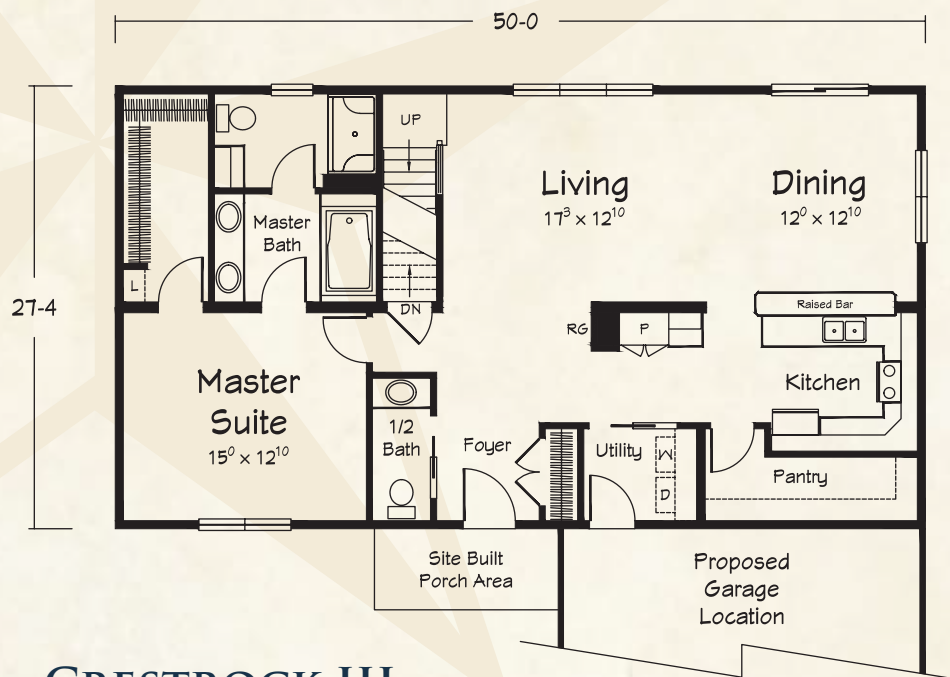
TWO STORY PLAN



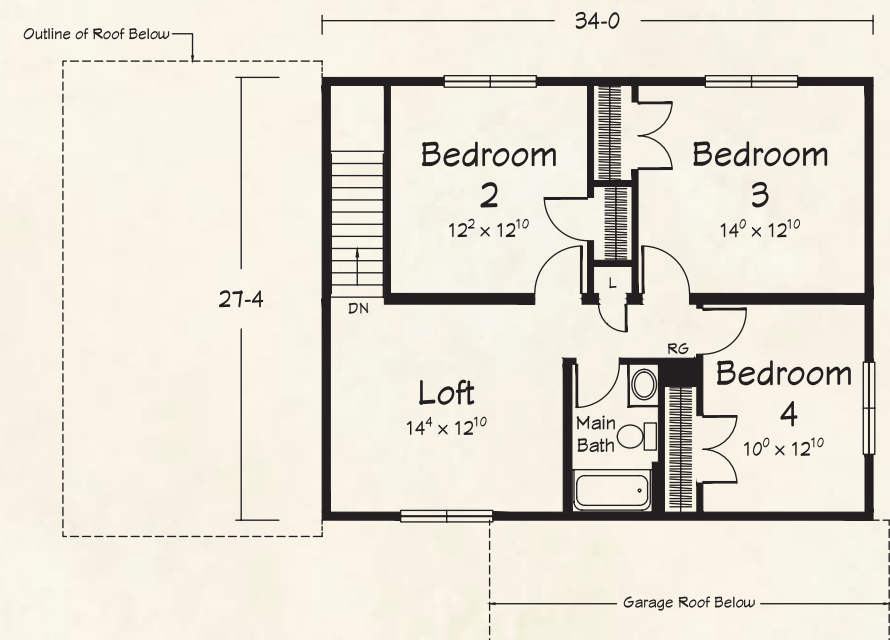
Roomy front garage plan for smaller sites



Crestrock III
First Floor



Crestrock III
Second Floor



CRESTROCK III

1367 sq. ft. First Floor Living Area

929 sq. ft. Second Floor Living Area

2296 sq. ft. Total

- 4 Bedrooms
- 2½ Baths

The FRANKLIN

TWO STORY PLAN

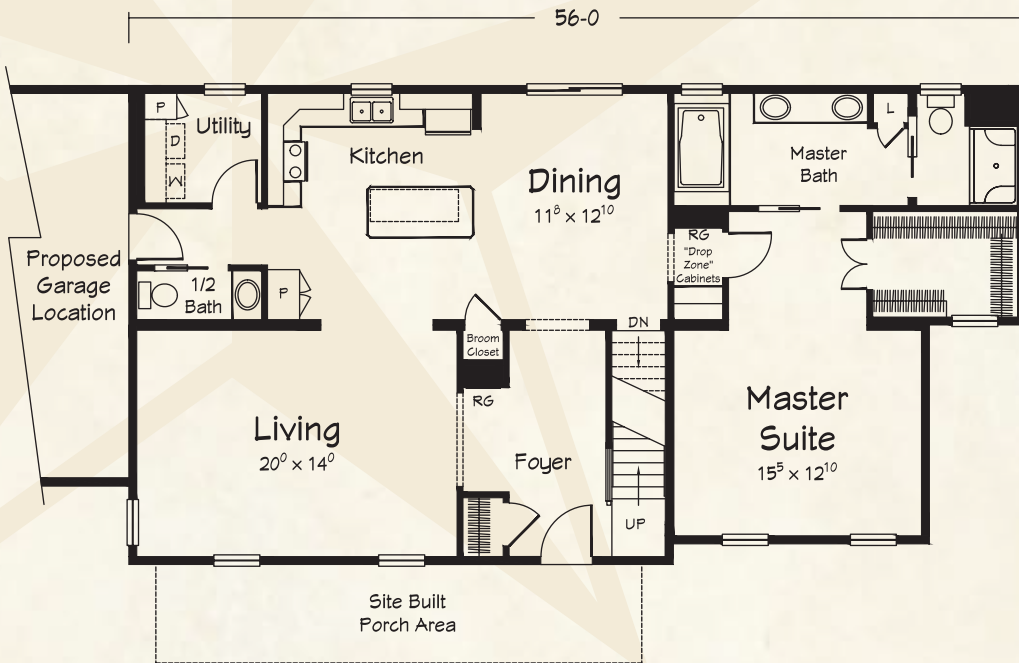


Two story charmer with integral dormers



Shown with site built porch

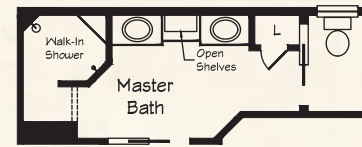
**Franklin
First Floor**



FRANKLIN

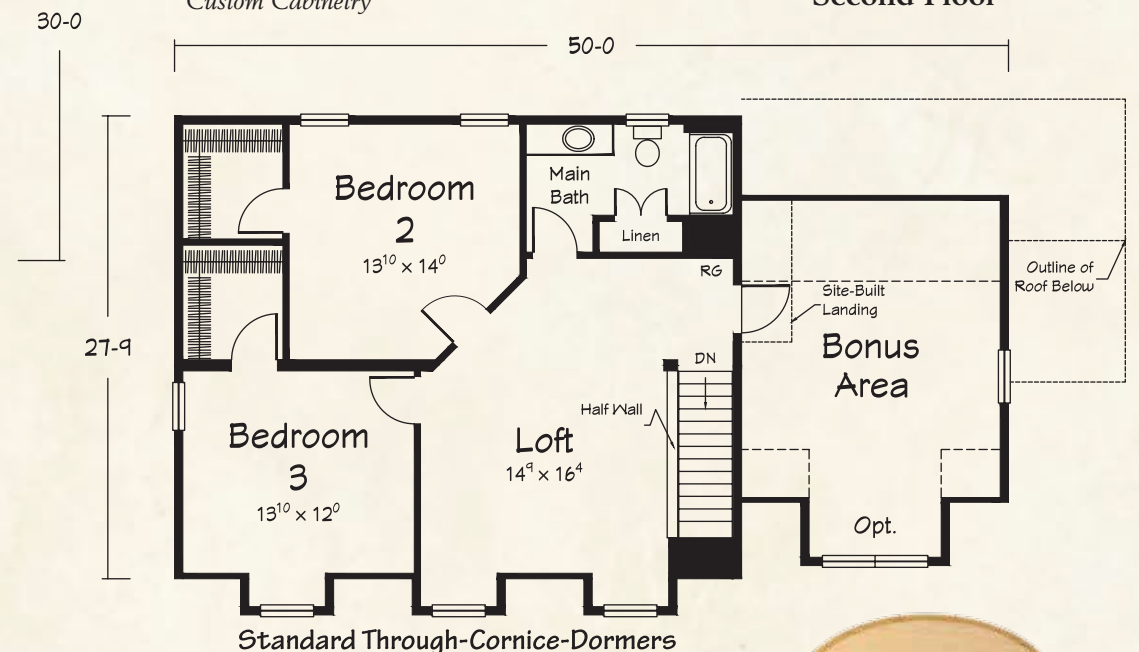
1565 sq. ft. First Floor Living Area
 980 sq. ft. Second Floor Living Area
 2545 sq. ft. Total
 Plus 328 sq. ft. Bonus Area

- 3 Bedrooms
- 2½ Baths



*Optional Master Bath
w/Infinity Shower and
Custom Cabinetry*

**Franklin
Second Floor**



Standard Through-Cornice-Dormers



Artist's renderings depict homes as they may be built on a typical site. Renderings may include optional or site installed features. Refer to Ritz Craft's standard "Benchmark Specifications" and be sure to thoroughly discuss all aspects of your building project with your selected homebuilder. **Unless otherwise noted, all "American Dream Home" Cape Cod and Two Story home plans include an interior stair area providing access to your full/walk-out basement. Each plan can be modified for a crawl space foundation.**

The SOMERTON II

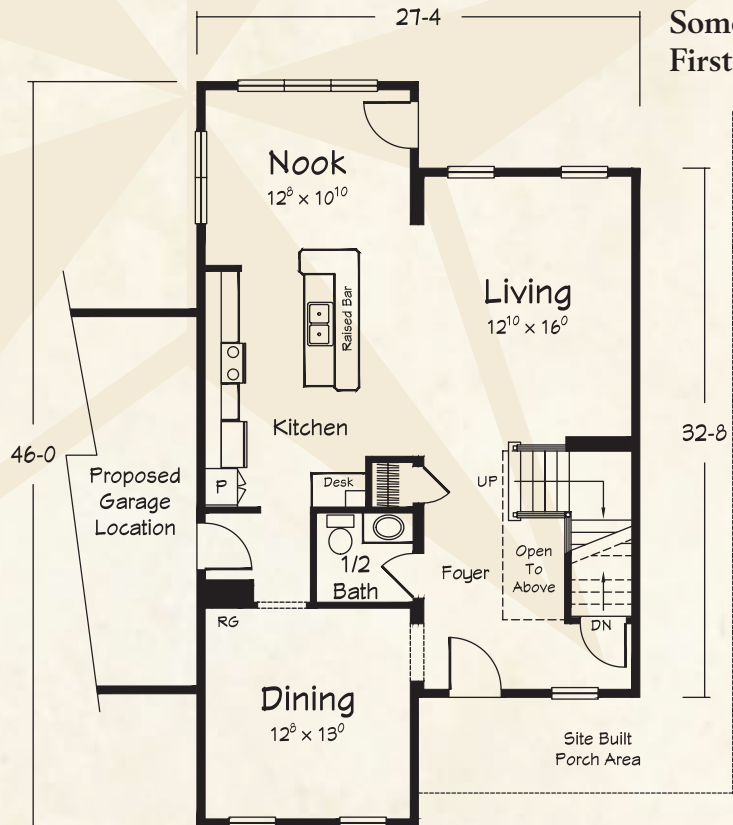
TWO STORY PLAN



Open living areas and
great for rear facing views



Shown with site built porch

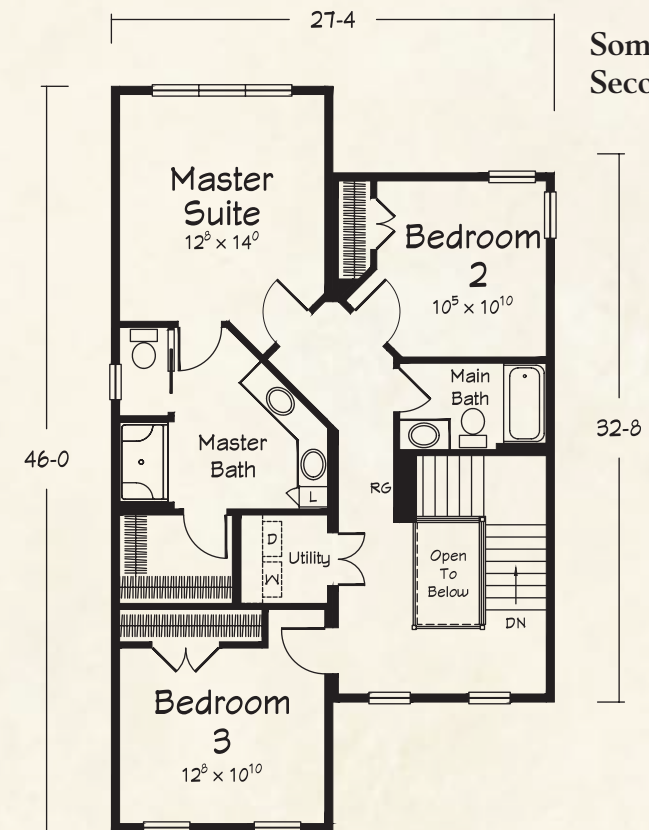


Somerton II
First Floor

SOMERTON II

1075 sq. ft. First Floor Living Area
1075 sq. ft. Second Floor Living Area
2150 sq. ft. Total

- 3 Bedrooms
- 2½ Baths



Somerton II
Second Floor

The HARTSVILLE III

TWO STORY PLAN

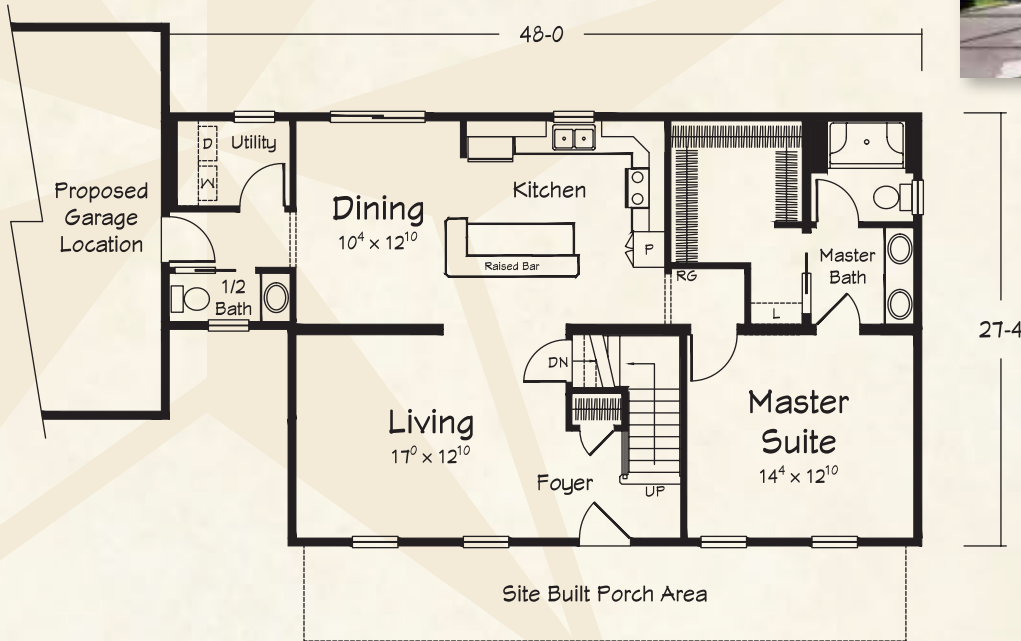


Traditional favorite

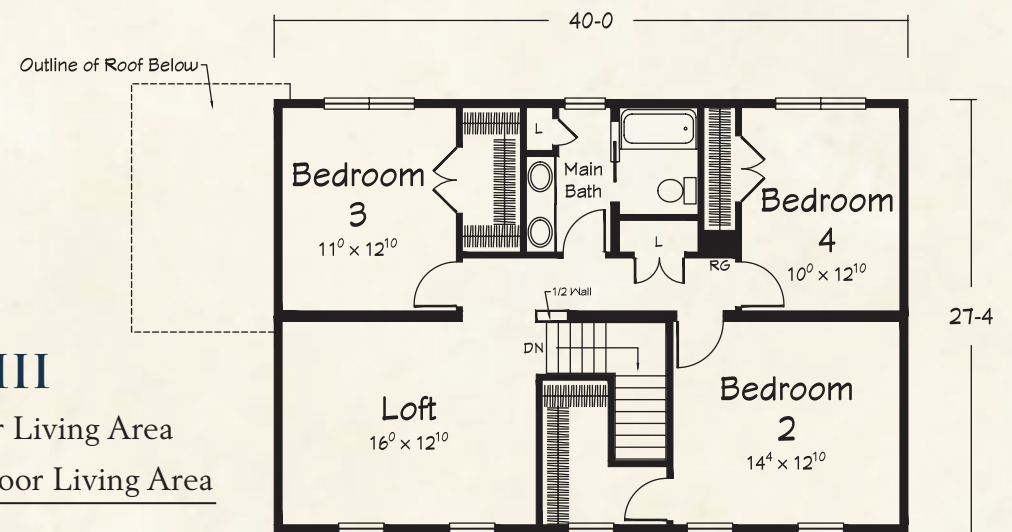


Shown with site built porch

**Hartsville III
First Floor**



**Hartsville III
Second Floor**



HARTSVILLE III

1203 sq. ft. First Floor Living Area
 1093 sq. ft. Second Floor Living Area
 2296 sq. ft. Total

- 4 Bedrooms
- 2½ Baths

Artist's renderings depict homes as they may be built on a typical site. Renderings may include optional or site installed features. Refer to Ritz Craft's standard "Benchmark Specifications" and be sure to thoroughly discuss all aspects of your building project with your selected homebuilder. **Unless otherwise noted, all "American Dream Home" Cape Cod and Two Story home plans include an interior stair area providing access to your full/walk-out basement. Each plan can be modified for a crawl space foundation.**



The BROCKTON II

TWO STORY PLAN

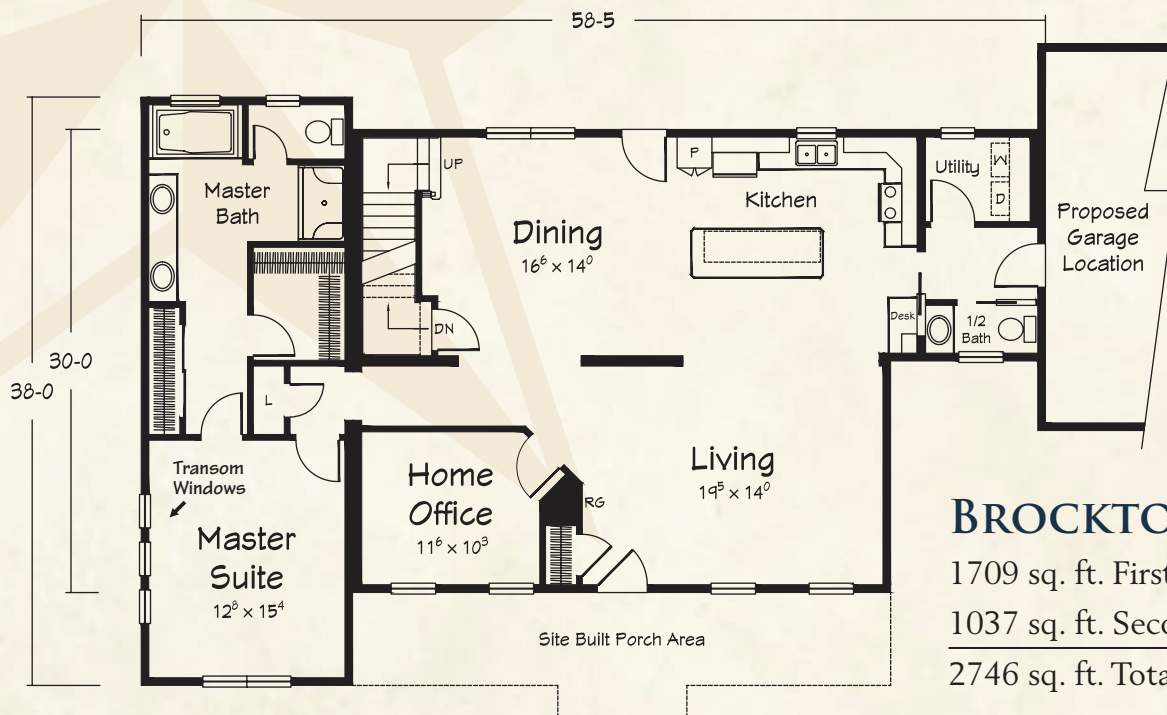


First floor master suite and home office

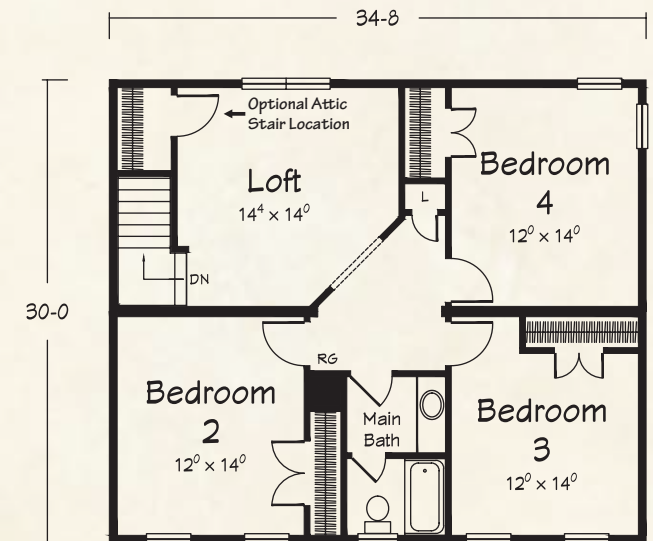


Shown with site built porch

Brockton II First Floor



Brockton II Second Floor



BROCKTON II

1709 sq. ft. First Floor Living Area
 1037 sq. ft. Second Floor Living Area
2746 sq. ft. Total

- 4 Bedrooms
- 2½ Baths

The DRUMMER BOY II

TWO STORY PLAN

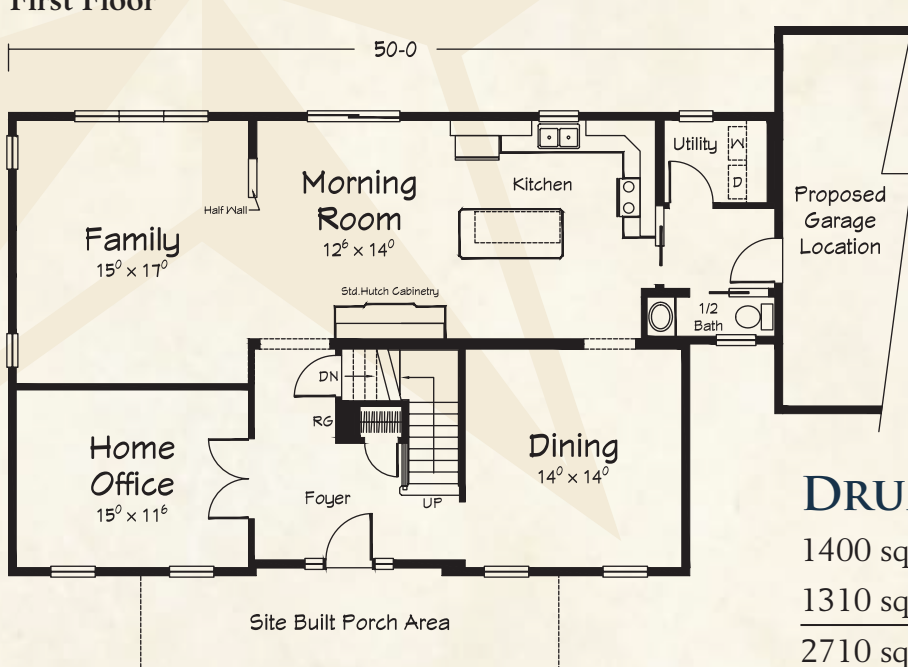


Impressive exterior – great family plan

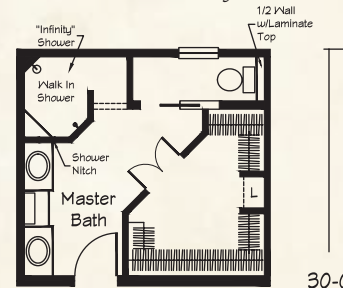


Shown with site built porch

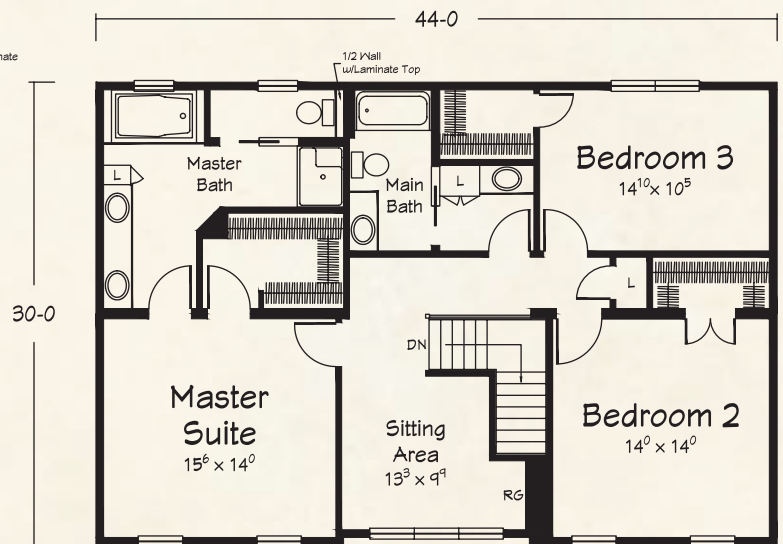
Drummer Boy II First Floor



Optional Master Bath w/Infinity Shower and Custom Cabinetry



Drummer Boy II Second Floor



DRUMMER BOY II

1400 sq. ft. First Floor Living Area
1310 sq. ft. Second Floor Living Area

2710 sq. ft. Total

- 3 Bedrooms
- 2½ Baths

Artist's renderings depict homes as they may be built on a typical site. Renderings may include optional or site installed features. Refer to Ritz Craft's standard "Benchmark Specifications" and be sure to thoroughly discuss all aspects of your building project with your selected homebuilder. **Unless otherwise noted, all "American Dream Home" Cape Cod and Two Story home plans include an interior stair area providing access to your full/walk-out basement. Each plan can be modified for a crawl space foundation.**



The ADRIENNE II TWO STORY PLAN



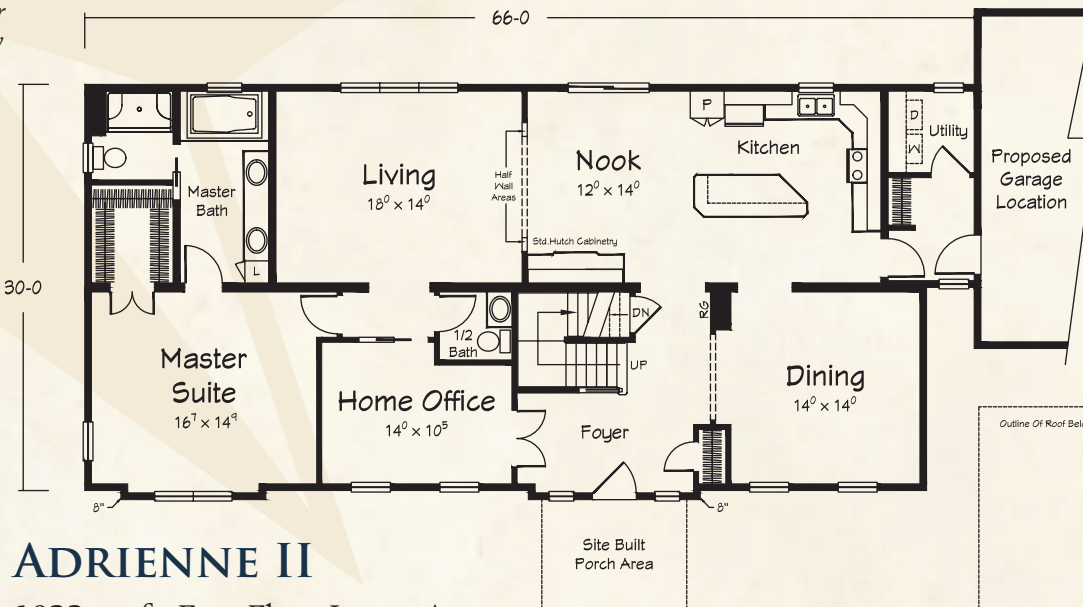
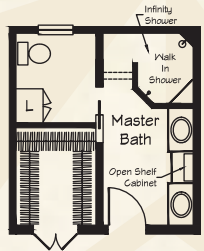
*Large center-hall Colonial
with first floor master suite*



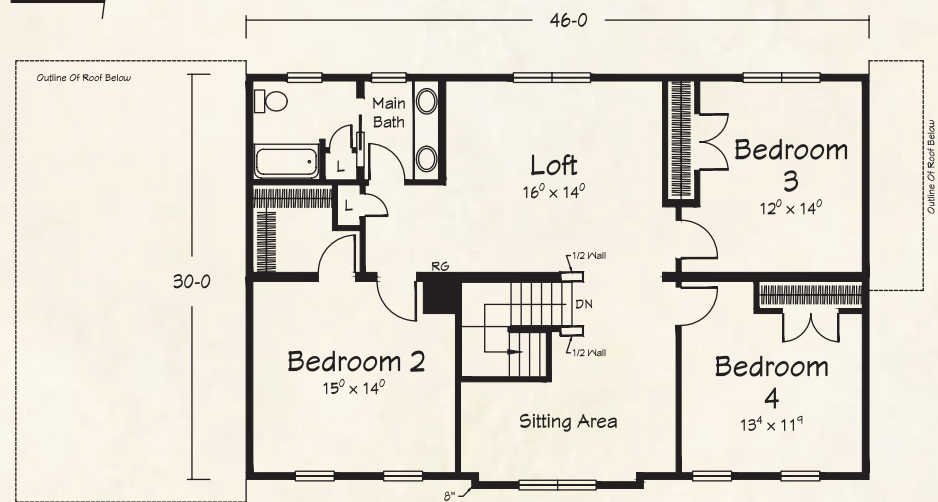
Shown with site built porch

Adrienne II First Floor

*Optional Master Bath
w/Mini Infinity Shower
and Custom Cabinetry*



Adrienne II Second Floor



ADRIENNE II

1933 sq. ft. First Floor Living Area
1387 sq. ft. Second Floor Living Area
3320 sq. ft. Total

- 4 Bedrooms
- 2½ Baths

The FARMVILLE II

TWO STORY PLAN

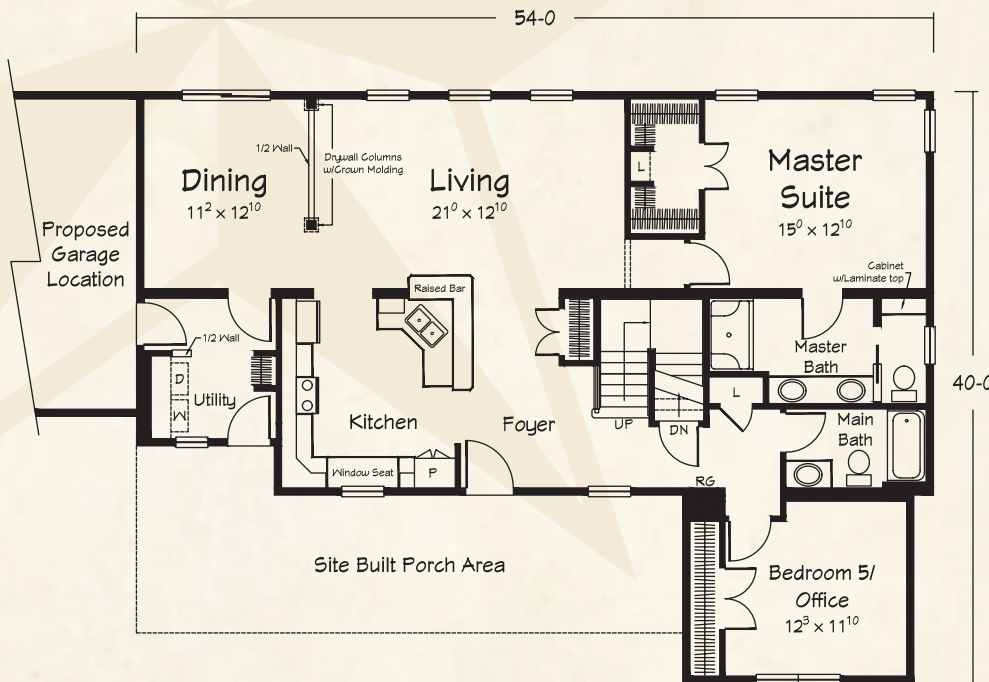


Classic farmhouse styling

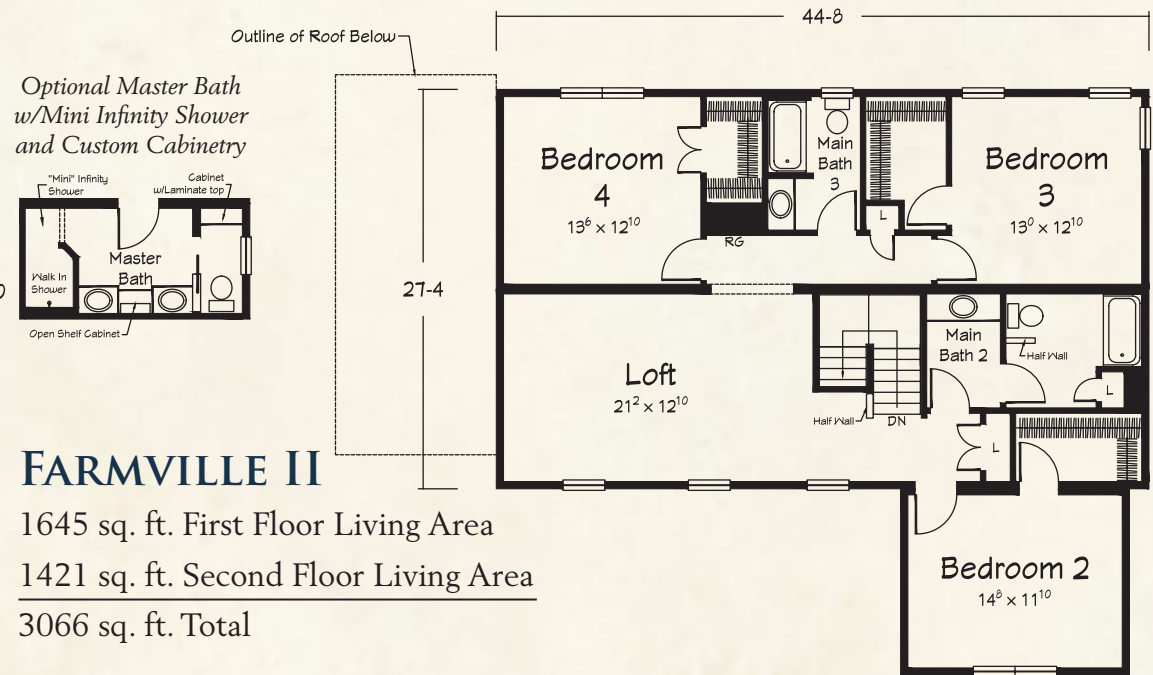


Shown with site built porch

Farmville II First Floor



Farmville II Second Floor



FARMVILLE II

1645 sq. ft. First Floor Living Area
 1421 sq. ft. Second Floor Living Area
 3066 sq. ft. Total

- 4-5 Bedrooms
- 4 Baths



Artist's renderings depict homes as they may be built on a typical site. Renderings may include optional or site installed features. Refer to Ritz Craft's standard "Benchmark Specifications" and be sure to thoroughly discuss all aspects of your building project with your selected homebuilder. **Unless otherwise noted, all "American Dream Home" Cape Cod and Two Story home plans include an interior stair area providing access to your full/walk-out basement. Each plan can be modified for a crawl space foundation.**

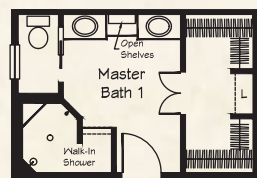
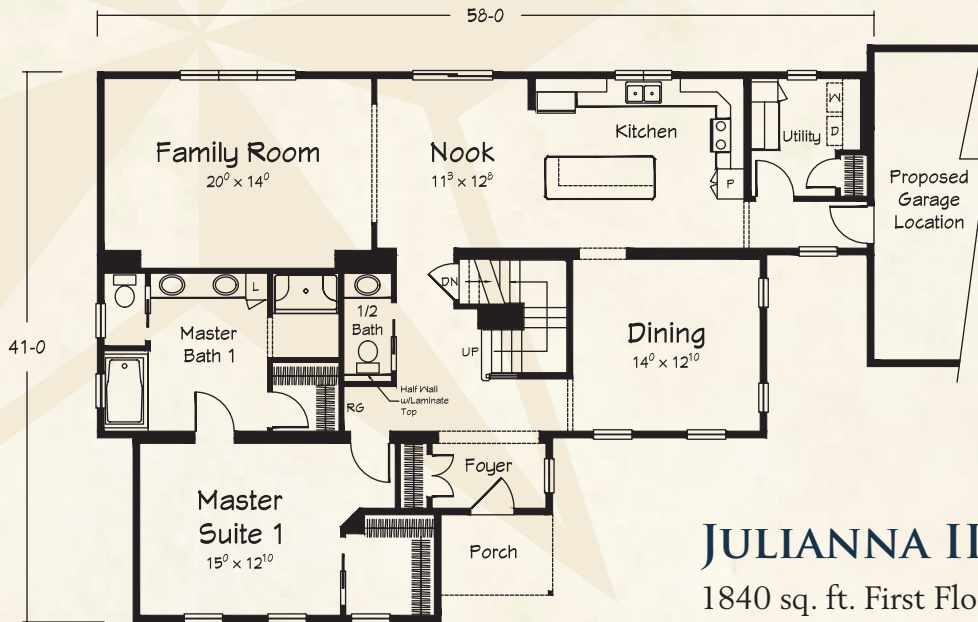
The JULIANNA II TWO STORY PLAN



Choose your master suite!



Julianne II First Floor



Optional Master Bath
w/Infinity Shower
and Custom Cabinetry

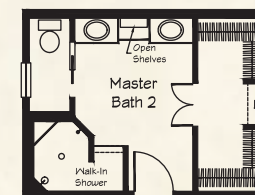
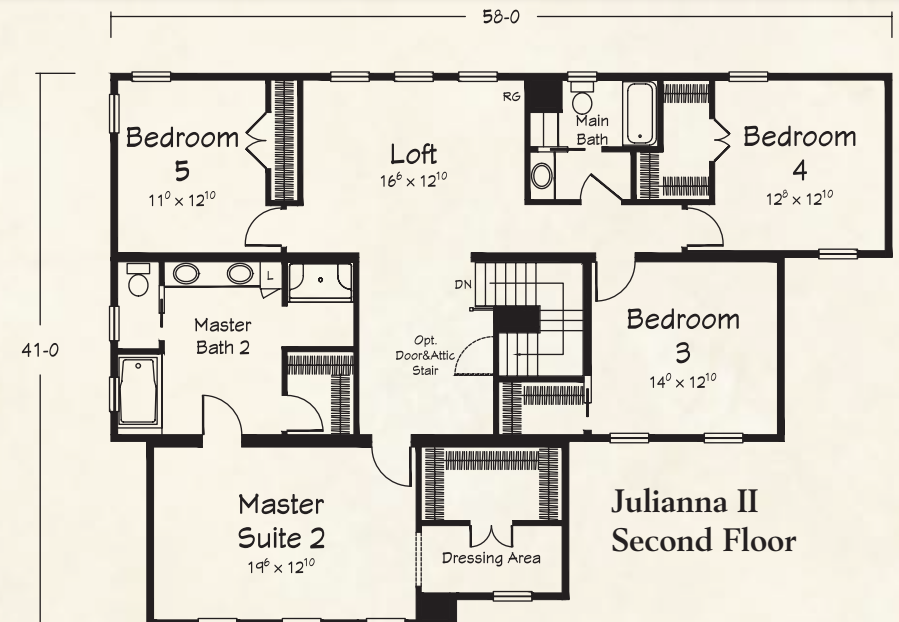
JULIANNA II

1840 sq. ft. First Floor Living Area

1890 sq. ft. Second Floor Living Area

3730 sq. ft. Total

- 5 Bedrooms
- 3½ Baths



Optional Master Bath
w/Infinity Shower
and Custom Cabinetry

ABOUT RITZ-CRAFT CUSTOM HOMES

Founded in 1954, and still family owned and operated, Ritz-Craft specializes in “system built homes” that are custom built off-site in one of five climate controlled facilities. The components are then transported to the site, installed on the foundation and completed by your selected Ritz-Craft builder.

Ritz-Craft home plans offer wide variety and are designed to embrace each region’s architecture while offering many aesthetically pleasing and functional features. Building your new home with Ritz-Craft’s custom designed modules offers many advantages over conventional “stick by stick” site assembly. Our precision construction methods take place under roof in well lighted, climate controlled and efficient workstations that allow high quality and high efficiency. In fact, our quality assurance process includes code compliance inspections by a state licensed third party agency and over twenty-five key inspection checkpoints monitored by our in-house Quality Assurance Team. Ritz-Craft also utilizes many Green Friendly materials and processes to save energy, recycle materials, and to manage waste in an environmentally responsible manner.

When you choose Ritz-Craft, you’re selecting an experienced company with a commitment to quality and to the future. We have grown from a modest one-plant operation into a thriving enterprise with over one million square feet of climate controlled production space in five modern, highly mechanized plants. Some people ask if our homes are built as well as a site built home....and our proud reply is “yes, --- as well, and in many respects, better.” We say that with confidence knowing our process simply cannot be matched with in-field home building methods.

We’re proud of our custom built single story, Cape Cod style, and two story homes and we sincerely thank you for considering Ritz-Craft for your next home.



Paul D. John, President/CEO
Eric John, Vice President



RITZ-CRAFT FAMILY OF COMPANIES

Our family of companies also includes Ritz-Trans, Legacy Crafted Cabinets and Legacy Building Products.





YOUR APPROVED
RITZ-CRAFT
HOMEBUILDER:

Approved homebuilders are independent business entities and are not agents of Ritz-Craft Corporation.

Due to occasional updating of building codes and Ritz-Craft's continuous product improvement, specifications are subject to change without prior notification. Be sure to request a copy of current specifications from your selected homebuilder.

©2015 Ritz-Craft Corporation 0315

