



AMERICAN HERITAGE

SERIES



Ritz-Craft
CUSTOM HOMES




**AMERICAN
HERITAGE**

SERIES

Our American Heritage Series is a collection of traditionally styled, “right-sized” plans that embrace the solid and practical needs of hard working American families—those who want to build an efficient and value-designed home to meet both their present needs and long term expectations.

Designed to be built efficiently and within your sensible budget considerations, our American Heritage plans don’t cut any corners with regard to energy efficiency or material quality. In fact, your new home will include the same premium grades of cabinetry, interior finishes, windows, exterior doors and siding as we’ve selected for our largest home plans.

Thank you for considering an American Heritage Series home by Ritz-Craft. We look forward to making your new home the next and most important home we build.



Shown with site built porch

Amherst

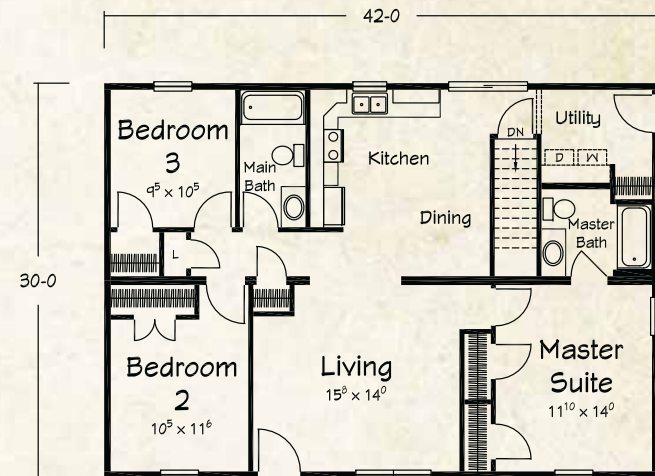
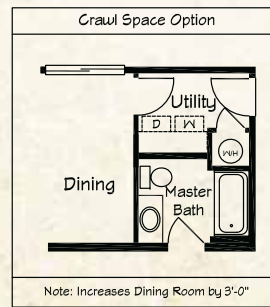
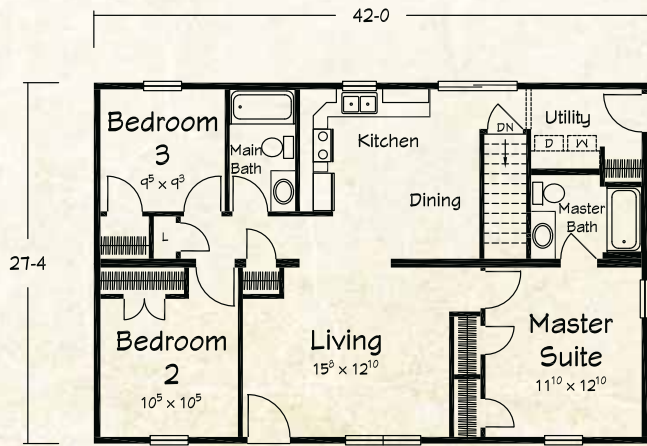
RANCH PLANS



Amherst I

1148 sq. ft. Living Area

- 3 Bedrooms
- 2 Baths



Amherst II

1260 sq. ft. Living Area

- 3 Bedrooms
- 2 Baths

Artist's renderings depict homes as they may be built on a typical site. Renderings may include optional or site installed features. Refer to Ritz-Craft's standard "Benchmark Specifications" and be sure to thoroughly discuss all aspects of your building project with your selected homebuilder.





Shown with site built porch and garage

Amber Way

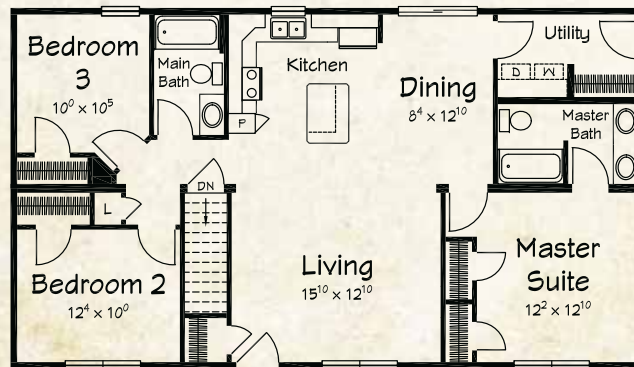
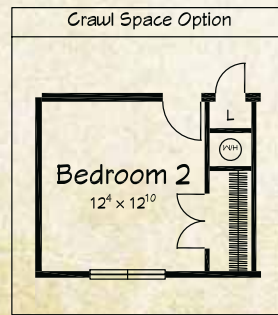
RANCH PLANS

Amber Way I

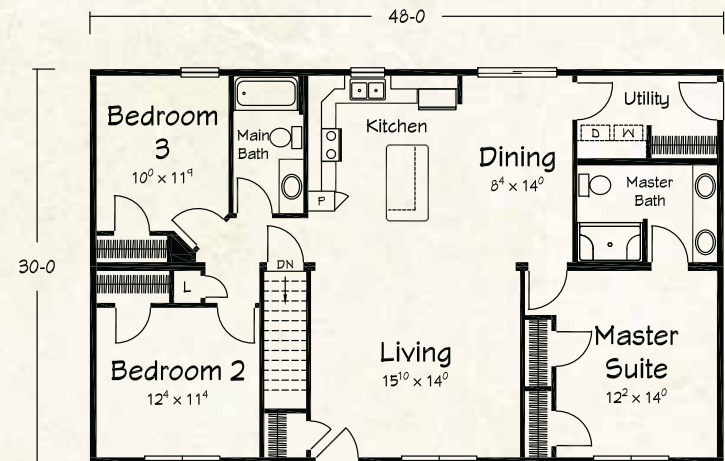
1312 sq. ft. Living Area

- 3 Bedrooms
- 2 Baths

48-0



27-4



Amber Way II

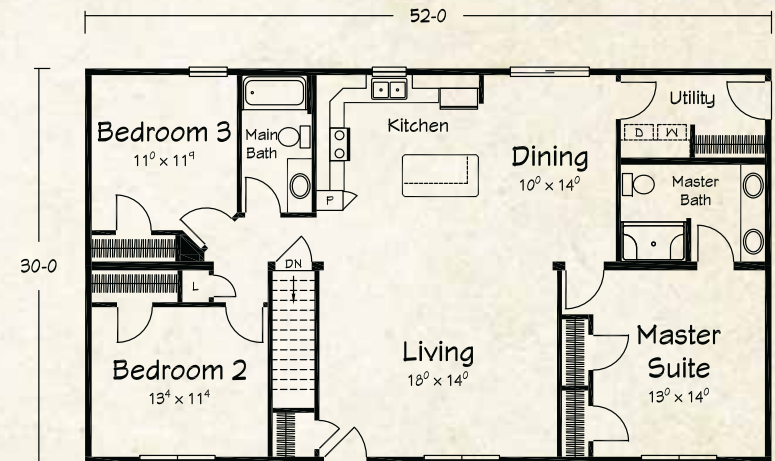
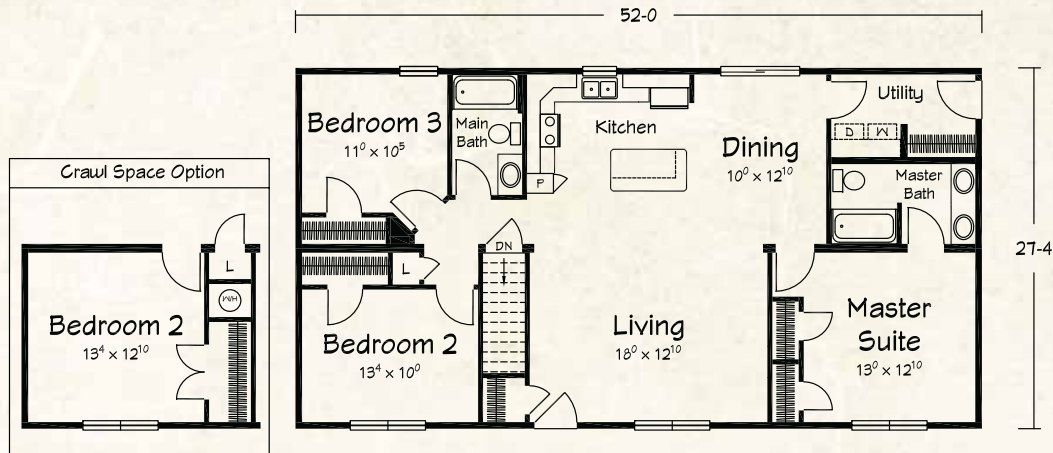
1440 sq. ft. Living Area

- 3 Bedrooms
- 2 Baths

Amber Way III

1421 sq. ft. Living Area

- 3 Bedrooms
- 2 Baths



Amber Way IV

1560 sq. ft. Living Area

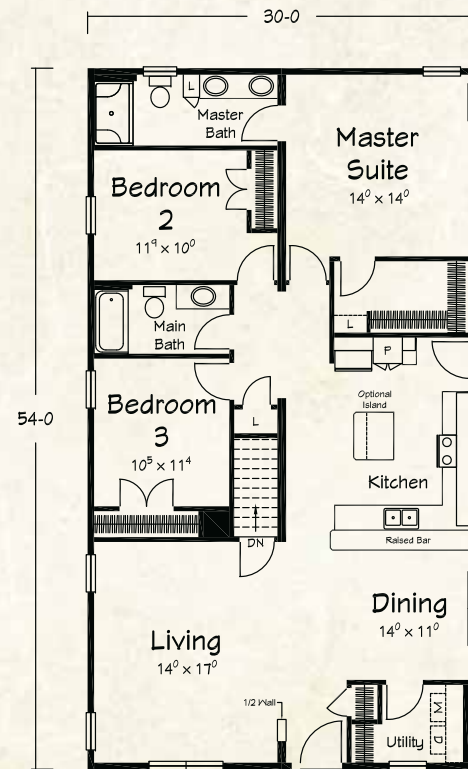
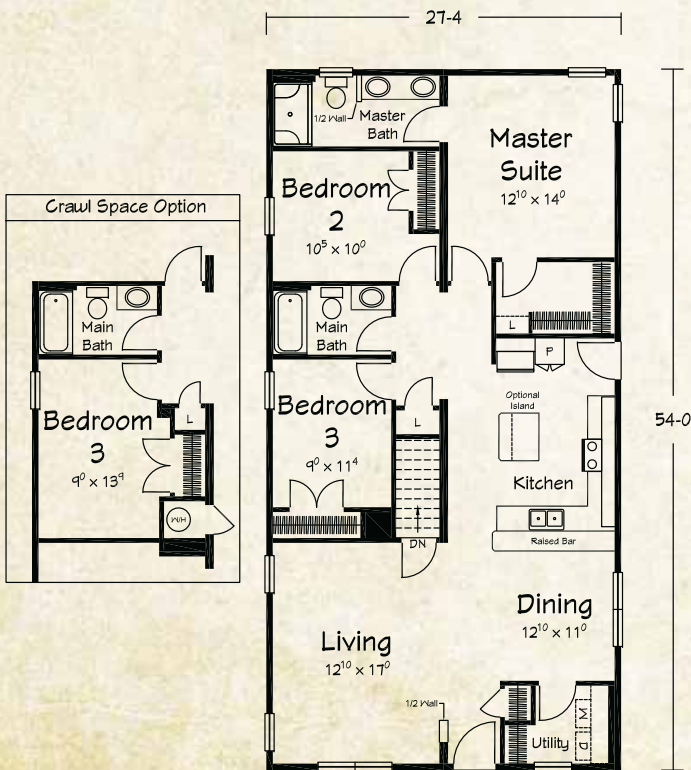
- 3 Bedrooms
- 2 Baths



Shown with site built porch

Mallard Walk

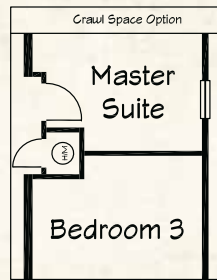
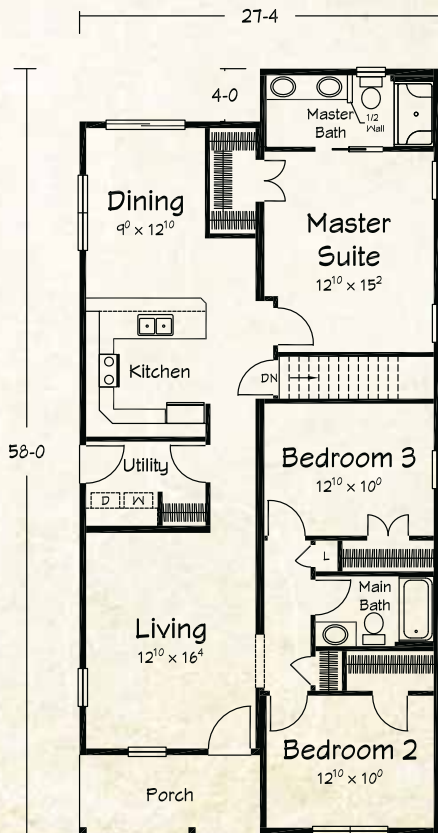
RANCH PLANS





Hillsdale

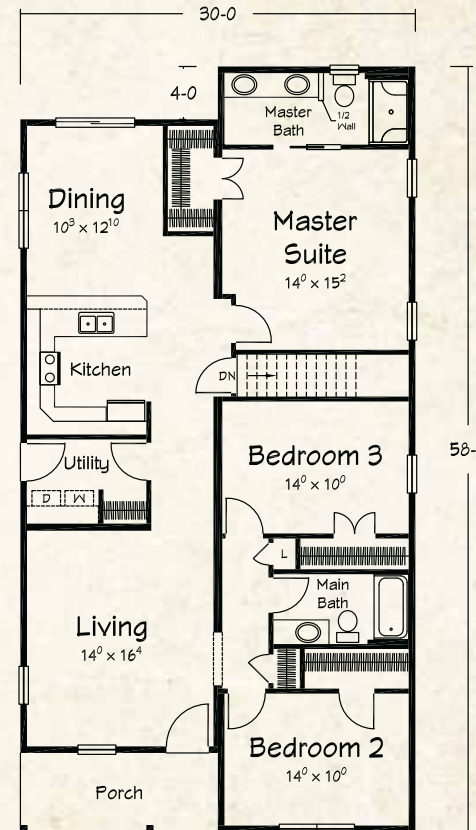
RANCH PLANS



Hillsdale I

1449 sq. ft. Living Area

- 3 Bedrooms
- 2 Baths



Hillsdale II

1590 sq. ft. Living Area

- 3 Bedrooms
- 2 Baths

Artist's renderings depict homes as they may be built on a typical site. Renderings may include optional or site installed features. Refer to Ritz-Craft's standard "Benchmark Specifications" and be sure to thoroughly discuss all aspects of your building project with your selected homebuilder.

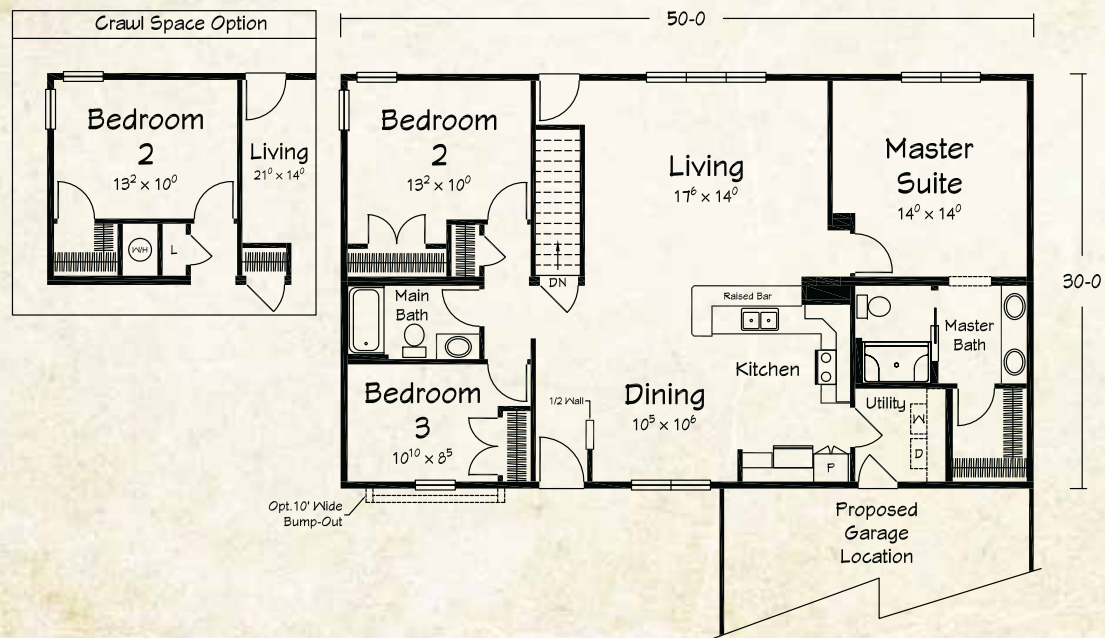




Hopewell

RANCH PLAN

Shown with site built porch/garage



Hopewell I

1500 sq. ft. Living Area

- 3 Bedrooms
- 2 Baths



Shown with site built porch/garage

Jubilee

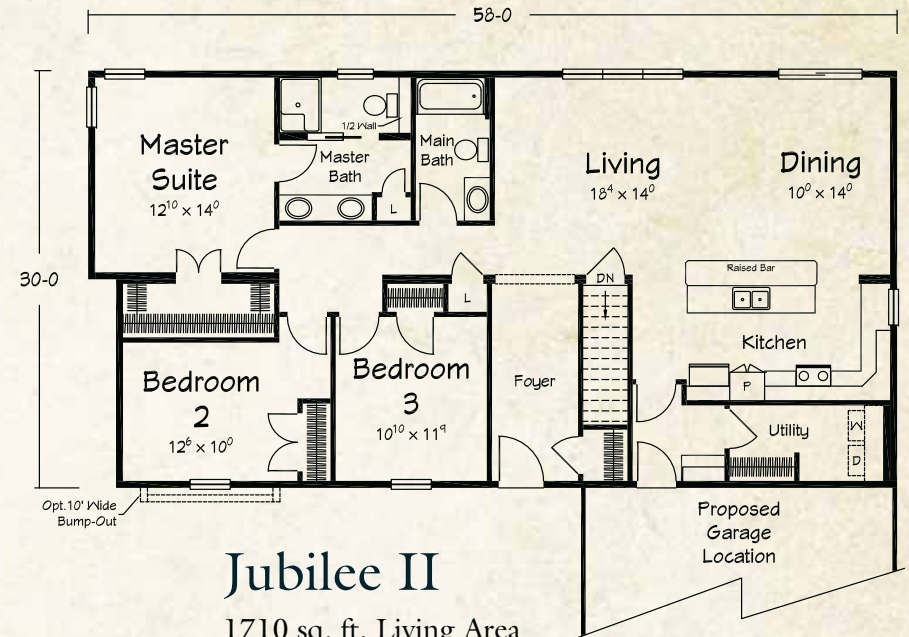
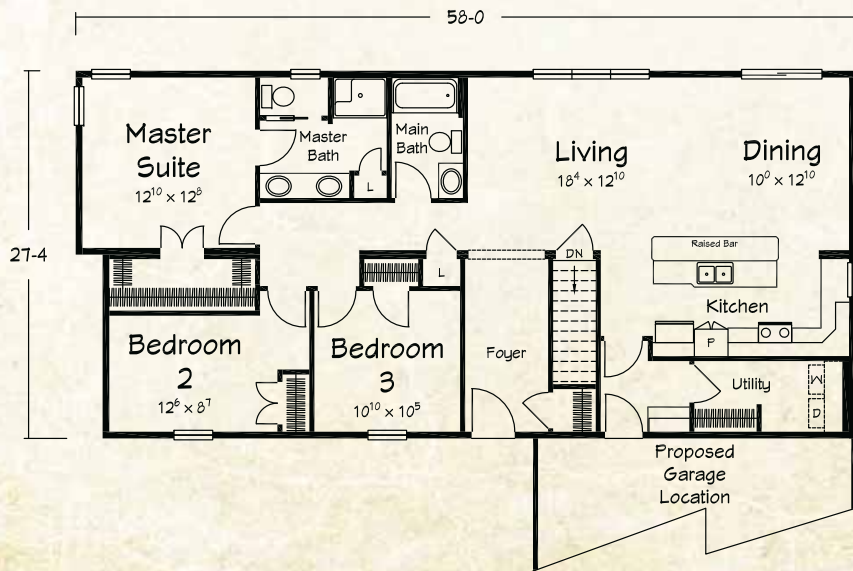
RANCH PLANS



Jubilee I

1558 sq. ft. Living Area

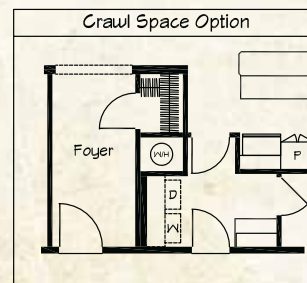
- 3 Bedrooms
- 2 Baths



Jubilee II

1710 sq. ft. Living Area

- 3 Bedrooms
- 2 Baths



Artist's renderings depict homes as they may be built on a typical site. Renderings may include optional or site installed features. Refer to Ritz-Craft's standard "Benchmark Specifications" and be sure to thoroughly discuss all aspects of your building project with your selected homebuilder.

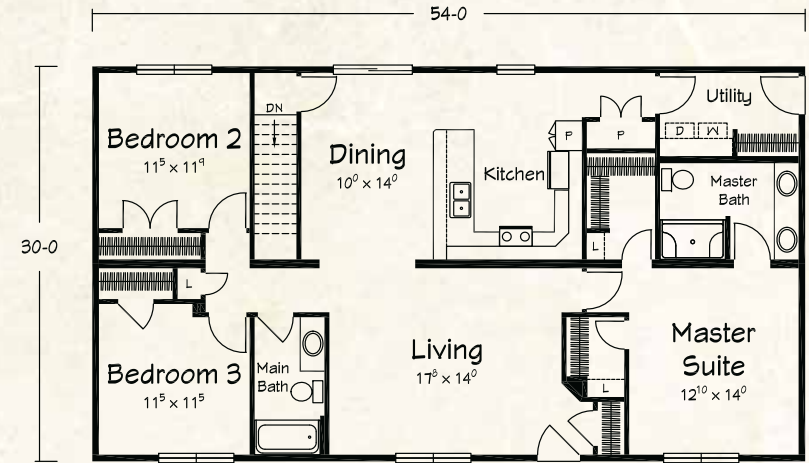




Shown with site built porch and garage

Jenkins Landing

RANCH PLANS



Jenkins Landing I

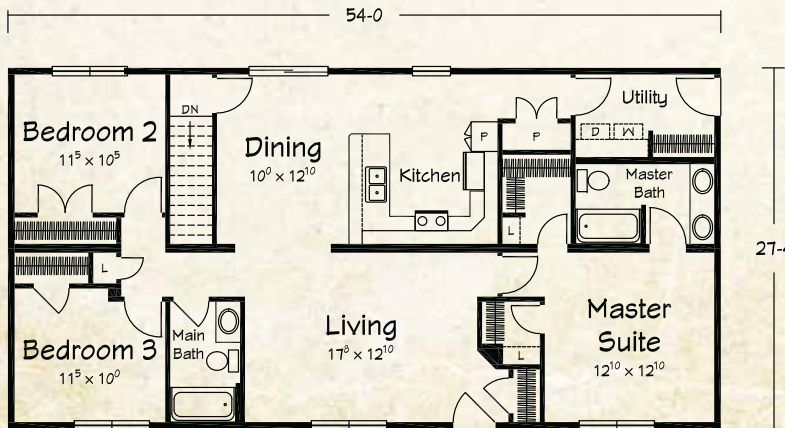
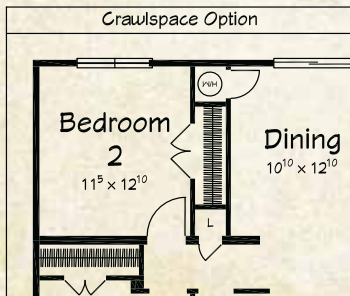
1476 sq. ft. Living Area

- 3 Bedrooms
- 2 Baths

Jenkins Landing II

1620 sq. ft. Living Area

- 3 Bedrooms
- 2 Baths

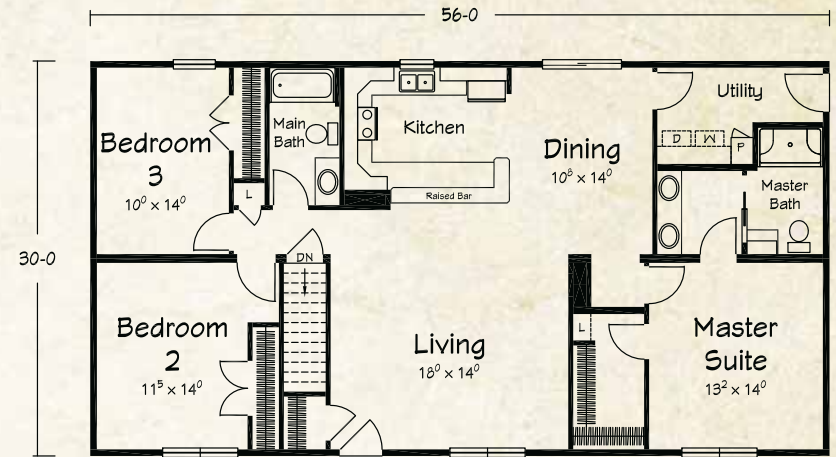




Shown with optional saddle roof/porch package

Smithtowne

RANCH PLANS



Smithtowne I

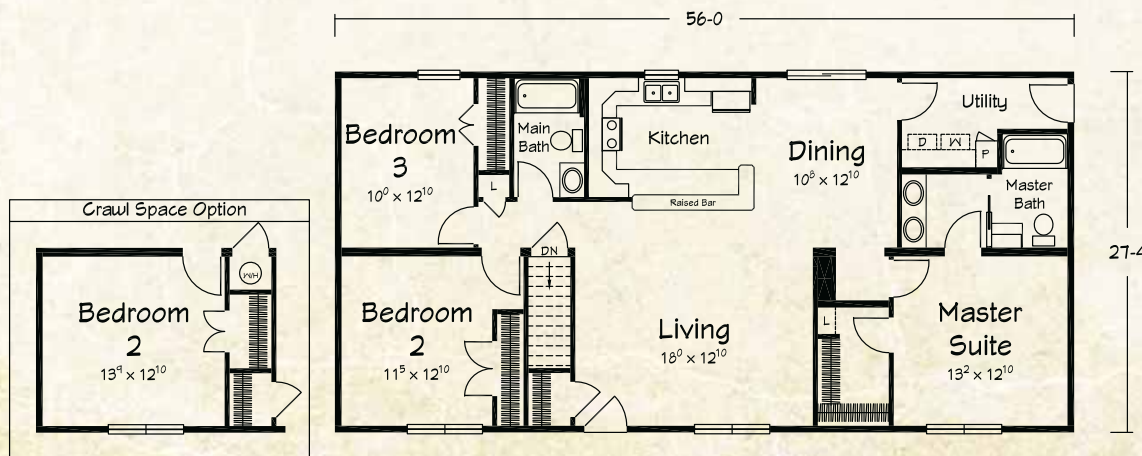
1530 sq. ft. Living Area

- 3 Bedrooms
- 2 Baths

Smithtowne II

1680 sq. ft. Living Area

- 3 Bedrooms
- 2 Baths



Artist's renderings depict homes as they may be built on a typical site. Renderings may include optional or site installed features. Refer to Ritz-Craft's standard "Benchmark Specifications" and be sure to thoroughly discuss all aspects of your building project with your selected homebuilder.

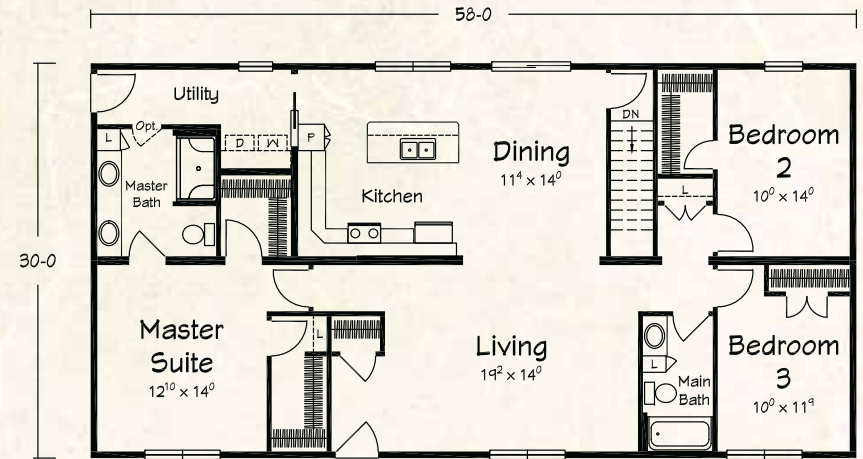




Shown with optional saddle roof/porch package

Alexis

RANCH PLANS



Alexis I

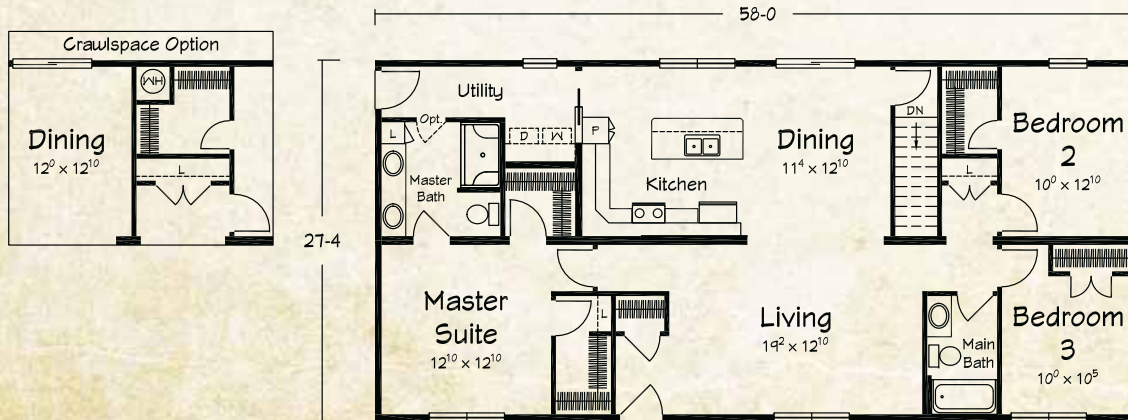
1585 sq. ft. Living Area

- 3 Bedrooms
- 2 Baths

Alexis II

1735 sq. ft. Living Area

- 3 Bedrooms
- 2 Baths



Floor plan exterior dimensions and interior room sizes are accurate, but may have been "rounded" for brochure plans. Always refer to Ritz-Craft provided prints for actual dimensions.



Shown with optional saddle roof/porch package and site built garage

Fitchburg

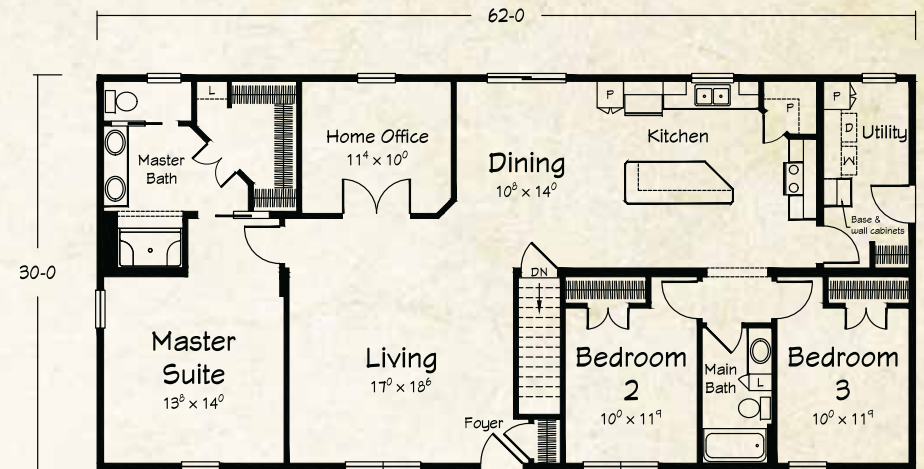
RANCH PLANS



Fitchburg I

1695 sq. ft. Living Area

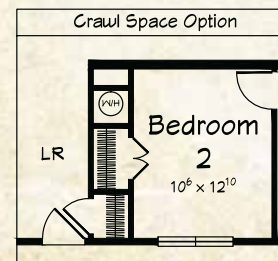
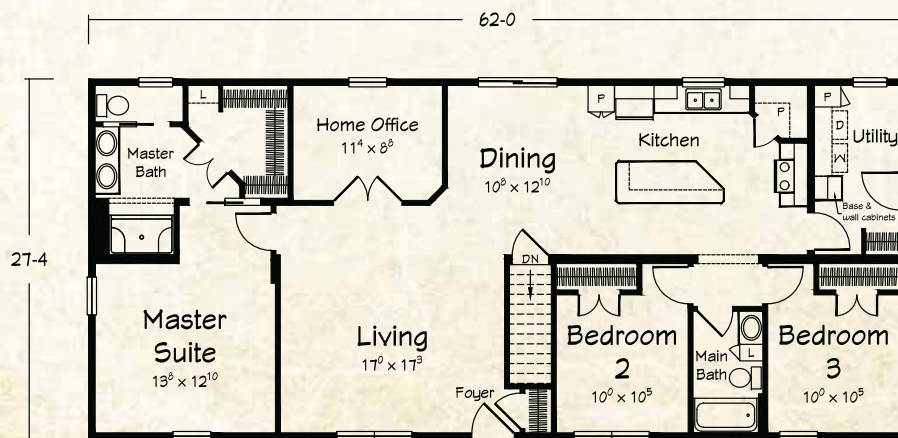
- 3 Bedrooms
- 2 Baths



Fitchburg II

1855 sq. ft. Living Area

- 3 Bedrooms
- 2 Baths



Artist's renderings depict homes as they may be built on a typical site. Renderings may include optional or site installed features. Refer to Ritz-Craft's standard "Benchmark Specifications" and be sure to thoroughly discuss all aspects of your building project with your selected homebuilder.





Shown with site built porch

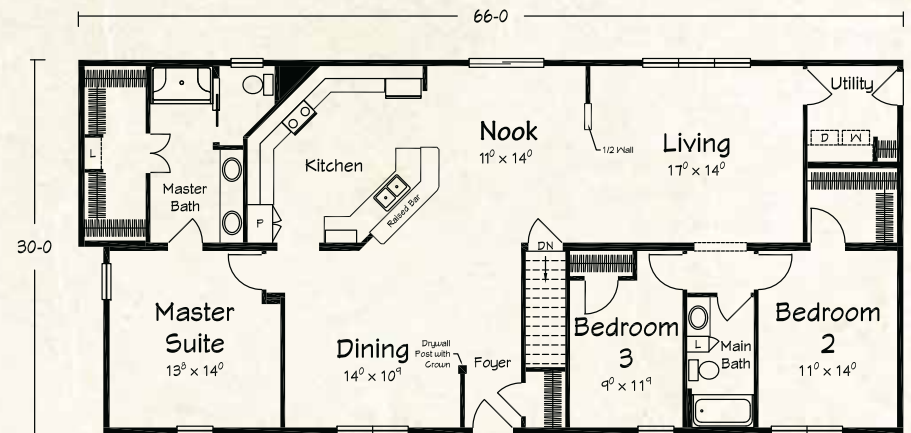
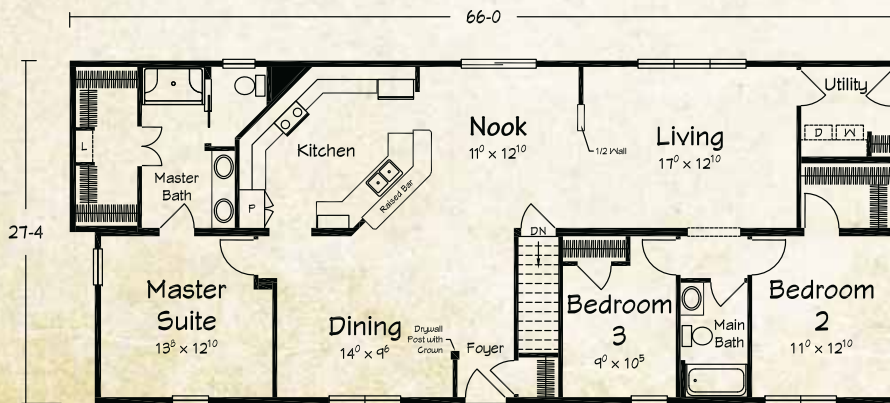
Silvertown

RANCH PLANS

Silvertown I

1777 sq. ft. Living Area

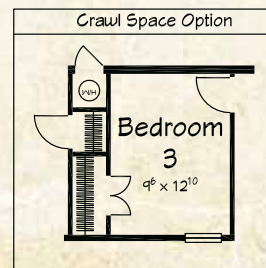
- 3 Bedrooms
- 2 Baths



Silvertown II

1950 sq. ft. Living Area

- 3 Bedrooms
- 2 Baths



Floor plan exterior dimensions and interior room sizes are accurate, but may have been "rounded" for brochure plans. Always refer to Ritz-Craft provided prints for actual dimensions.



Shown with optional saddle roof/porch package

Oakhurst

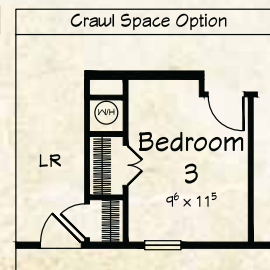
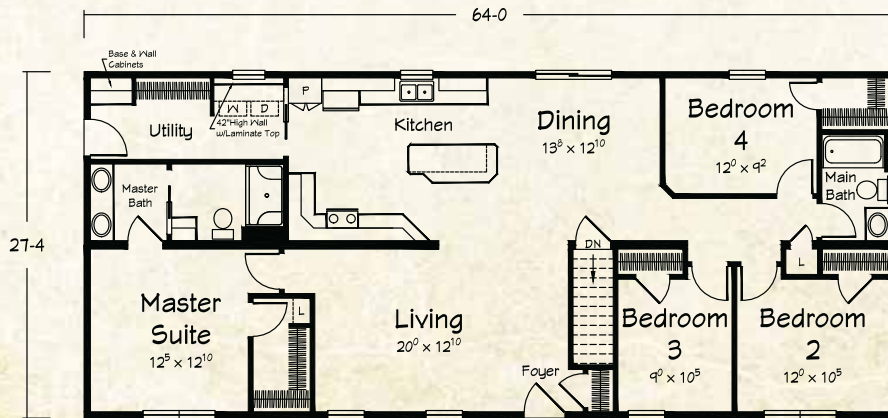
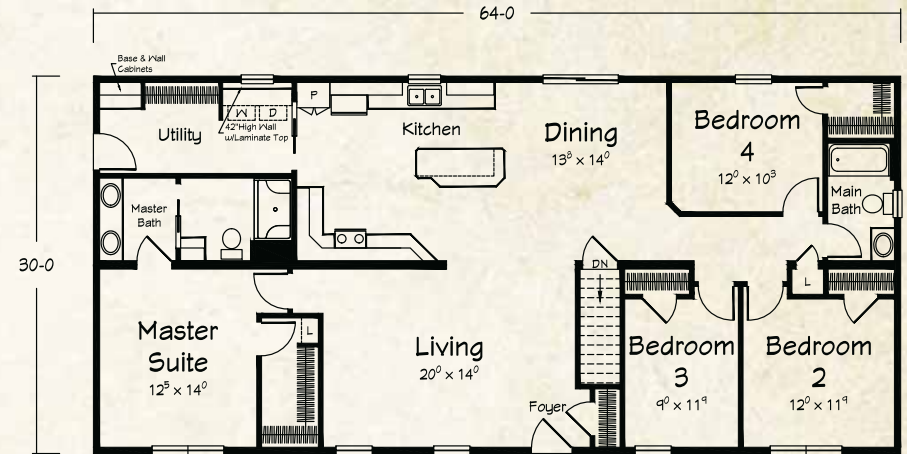
RANCH PLANS



Oakhurst I

1749 sq. ft. Living Area

- 4 Bedrooms
- 2 Baths



Oakhurst II

1915 sq. ft. Living Area

- 4 Bedrooms
- 2 Baths

Artist's renderings depict homes as they may be built on a typical site. Renderings may include optional or site installed features. Refer to Ritz-Craft's standard "Benchmark Specifications" and be sure to thoroughly discuss all aspects of your building project with your selected homebuilder.





Shown with optional saddle roof/porch package

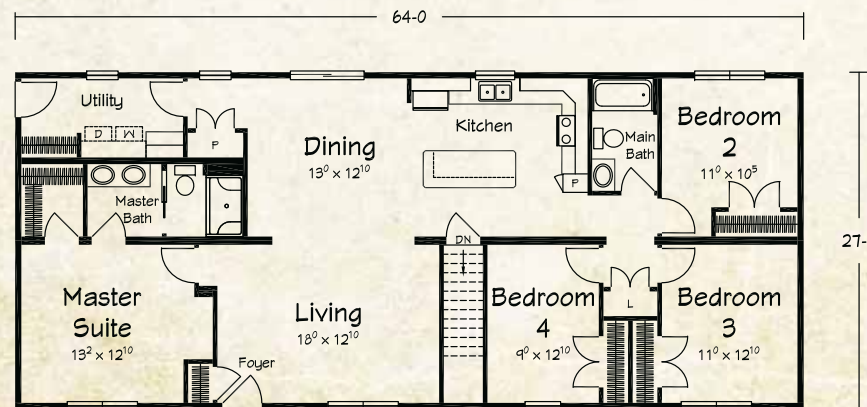
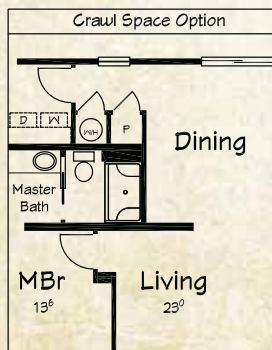
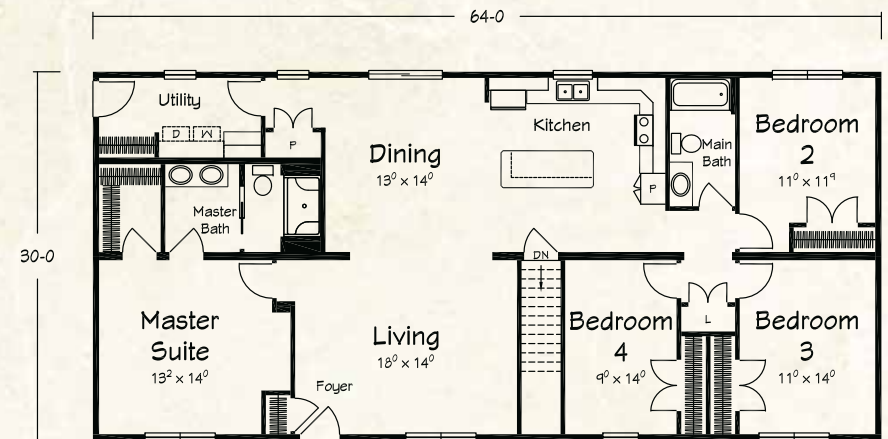
Junction Pointe

RANCH PLANS

Junction Pointe I

1749 sq. ft. Living Area

- 4 Bedrooms
- 2 Baths



Junction Pointe II

1920 sq. ft. Living Area

- 4 Bedrooms
- 2 Baths



Shown with site built porch and garage

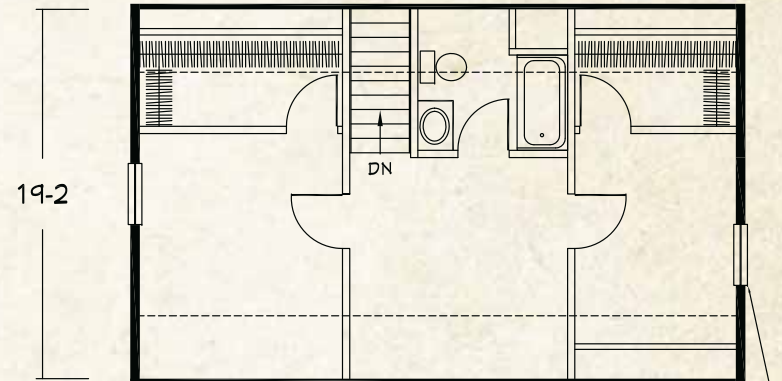
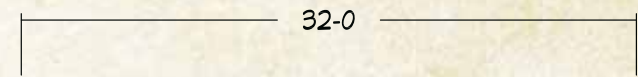
Journey

CAPE COD PLAN

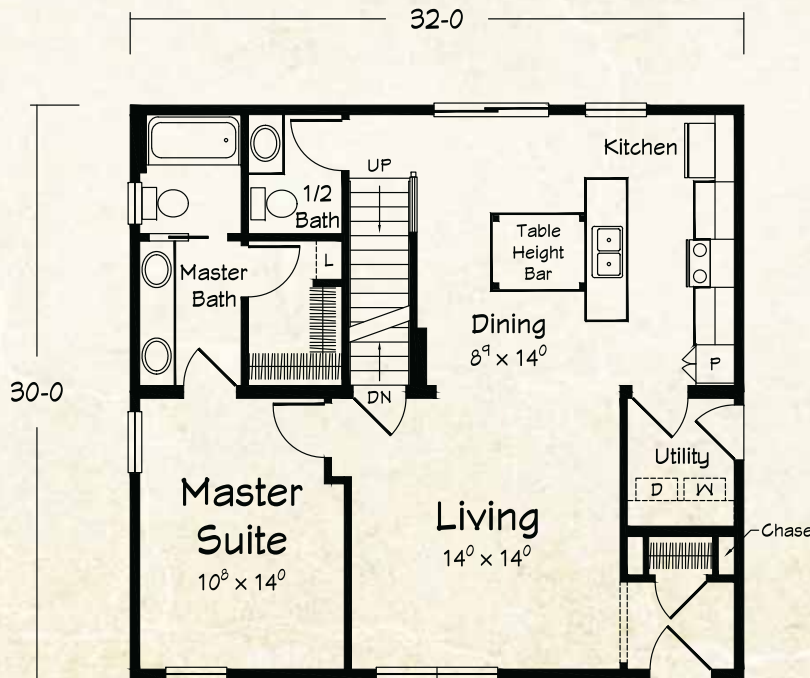
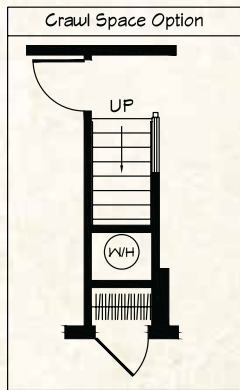


Journey I

665 sq. ft. Proposed Upper Level (Approx.)



Note: Window shown in optional location for garage attachment (Centered in gable if not requested)



Journey I

960 sq. ft. First Floor Living Area

- 1 Bedroom
- 1½ Baths

Artist's renderings depict homes as they may be built on a typical site. Renderings may include optional or site installed features. Refer to Ritz-Craft's standard "Benchmark Specifications" and be sure to thoroughly discuss all aspects of your building project with your selected homebuilder.





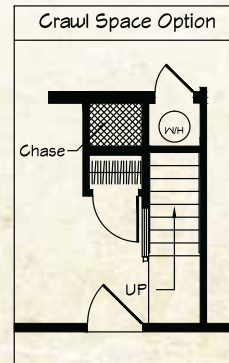
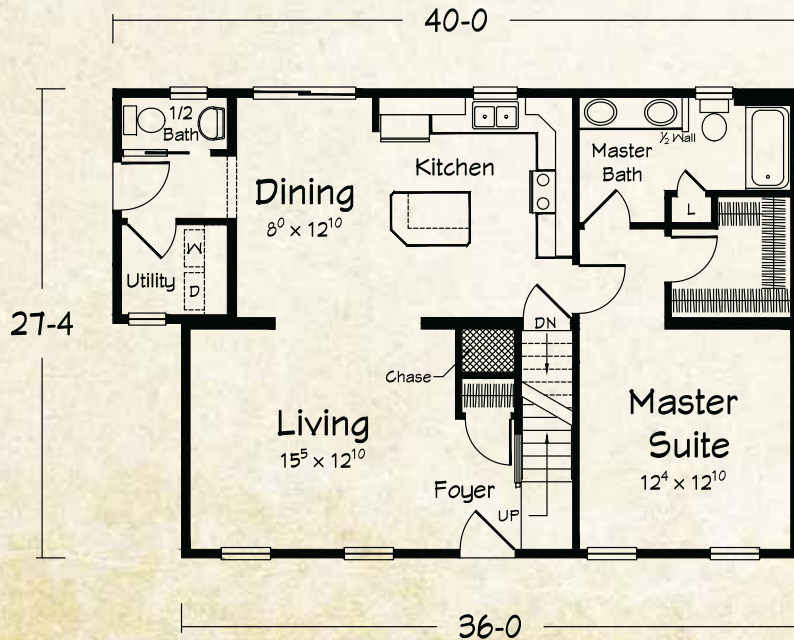
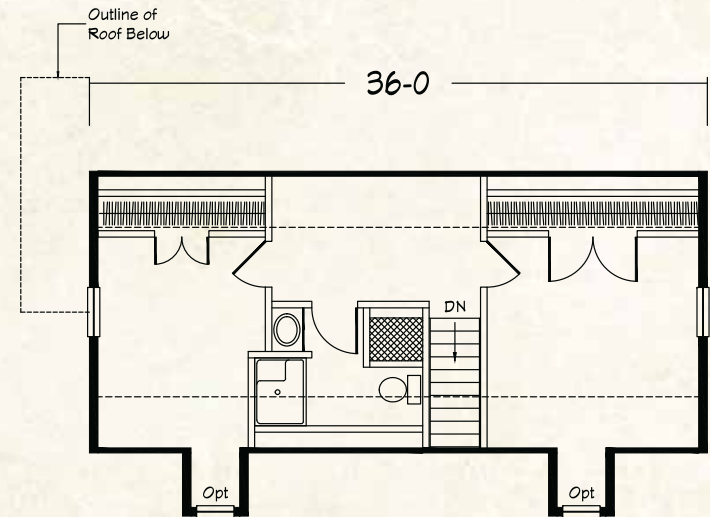
Shown with site built porch

Serena

CAPE COD PLANS

Serena I

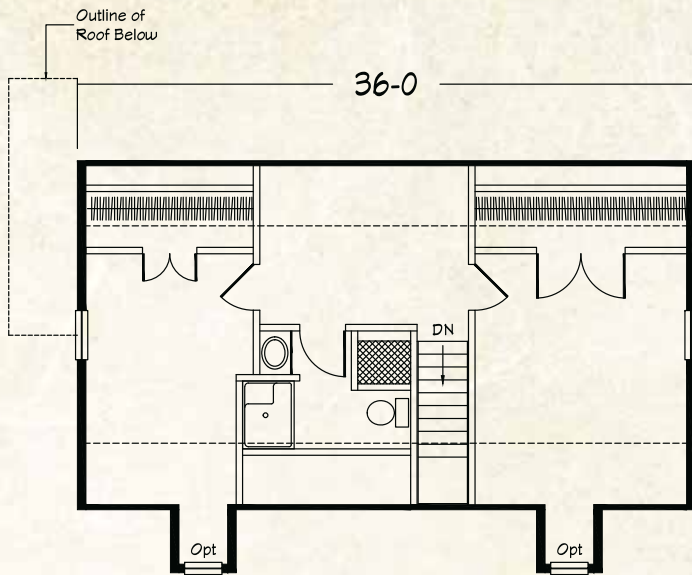
591 sq. ft. Proposed Upper Level (Approx.)



Serena I

1039 sq. ft. First Floor Living Area

- 1 Bedroom
- 1½ Baths



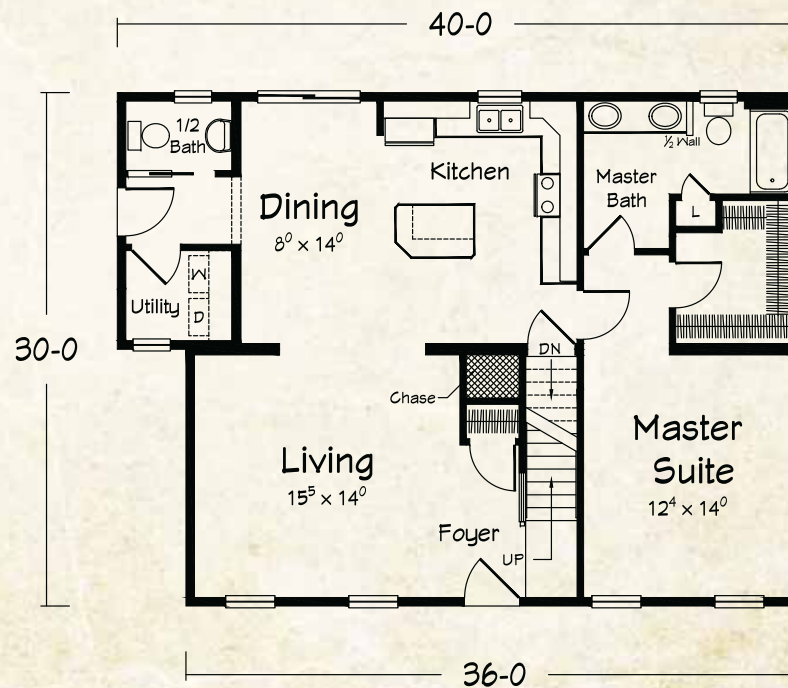
Serena II

732 sq. ft. Proposed Upper Level (Approx.)

Serena II

1140 sq. ft. First Floor Living Area

- 1 Bedroom
- 1½ Baths





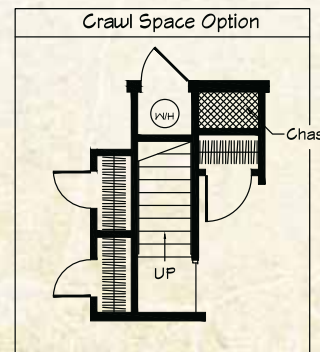
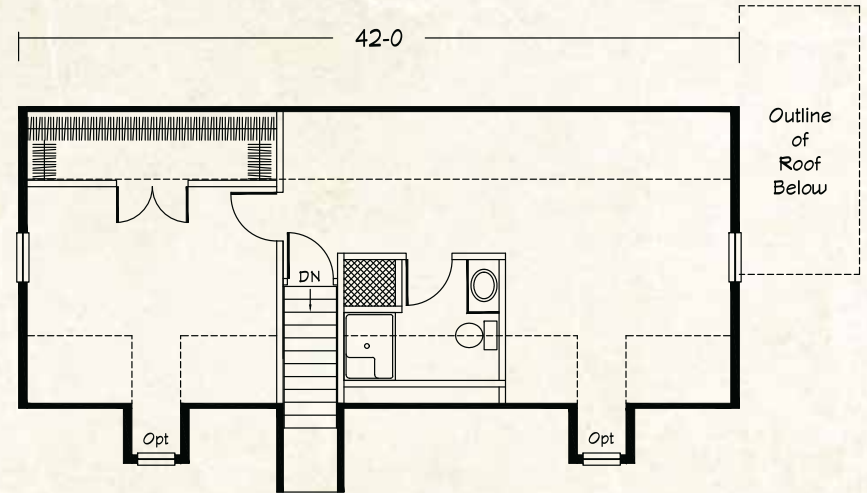
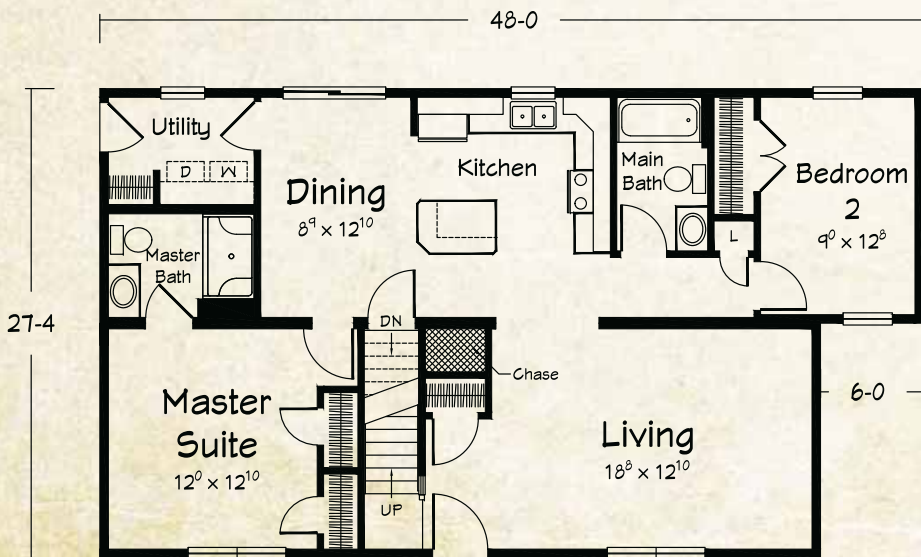
Shown with site built porch

Azure Bay

CAPE COD PLANS

Azure Bay I

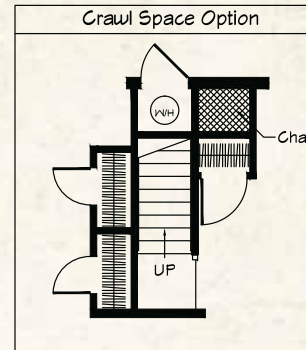
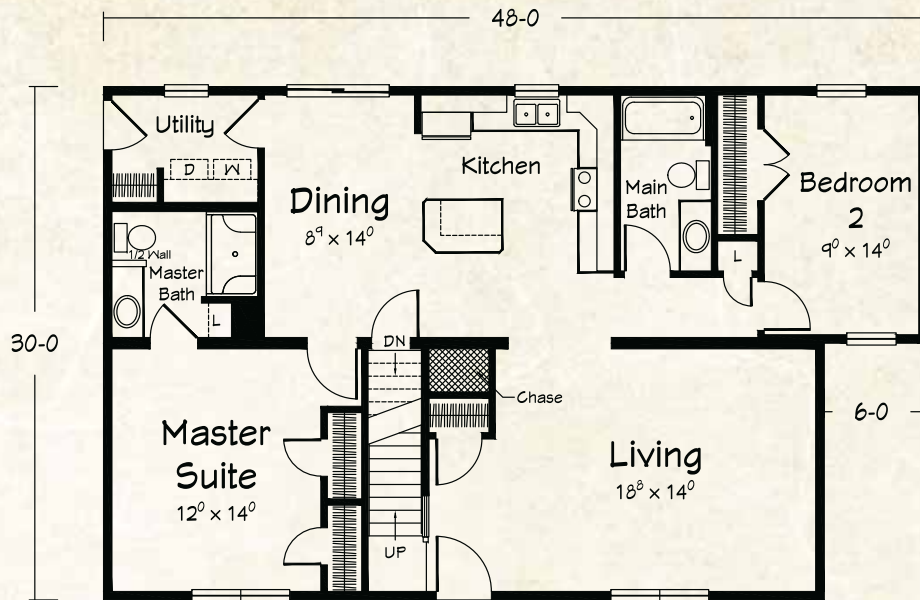
674 sq. ft. Proposed Upper Level (Approx.)



Azure Bay I

1230 sq. ft. First Floor Living Area

- 2 Bedrooms
- 2 Baths



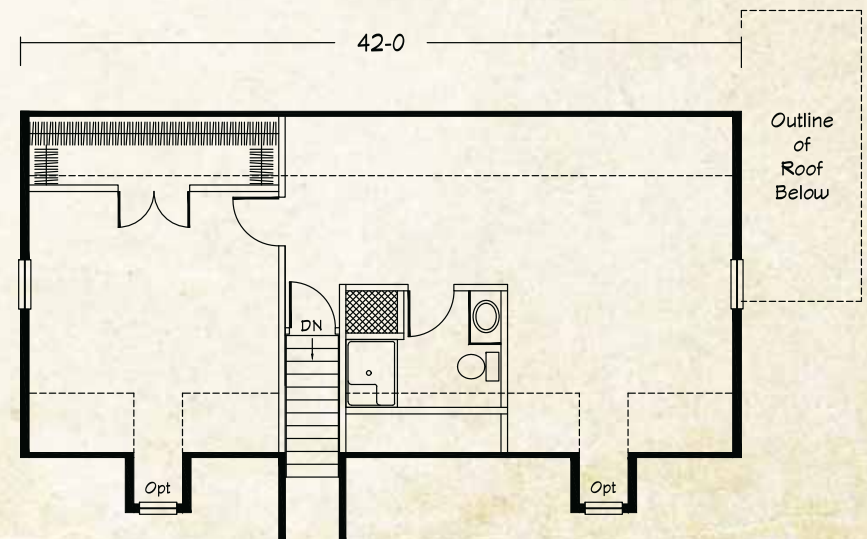
Azure Bay II

834 sq. ft. Proposed Upper Level (Approx.)

Azure Bay II

1350 sq. ft. First Floor Living Area

- 2 Bedrooms
- 2 Baths

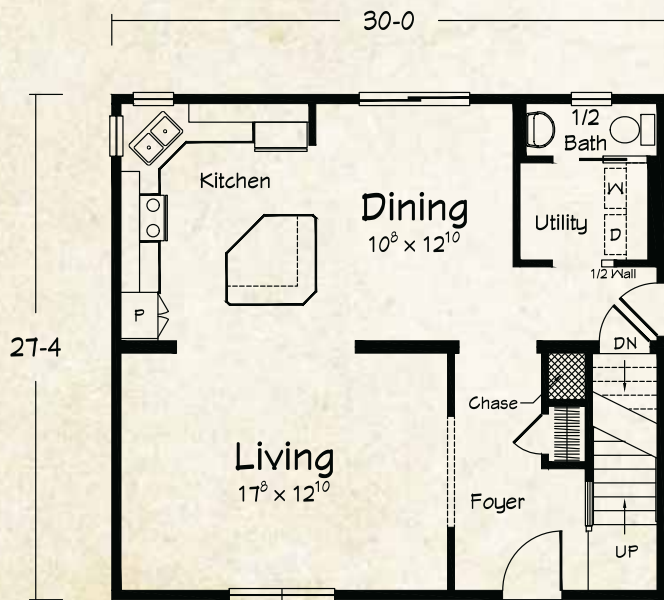




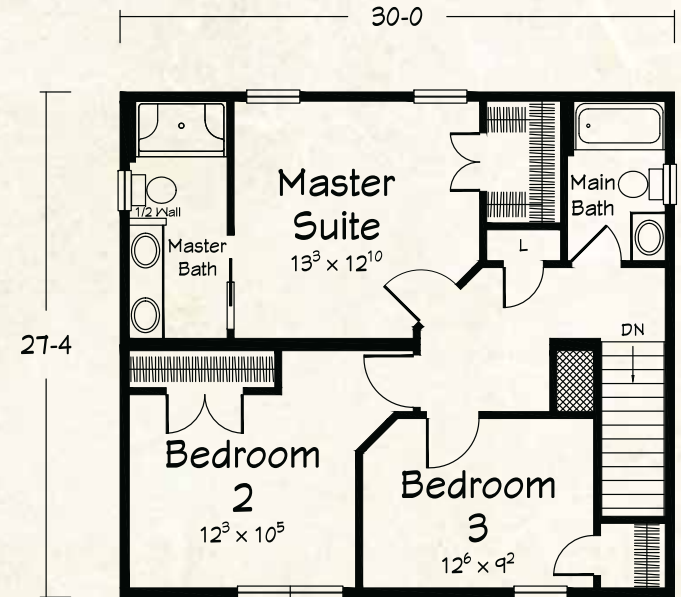
Shown with site built porch/garage

Sage

TWO STORY PLANS



Sage I
First Floor



Sage I
Second Floor

Sage I

820 sq. ft. First Floor Living Area
 820 sq. ft. Second Floor Living Area

 1640 sq. ft. Total

- 3 Bedrooms
- 2½ Baths

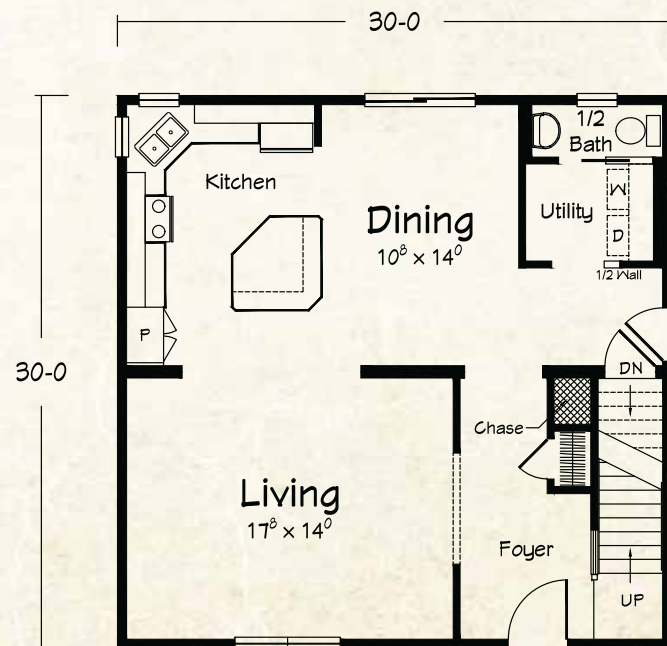
Sage II

900 sq. ft. First Floor Living Area

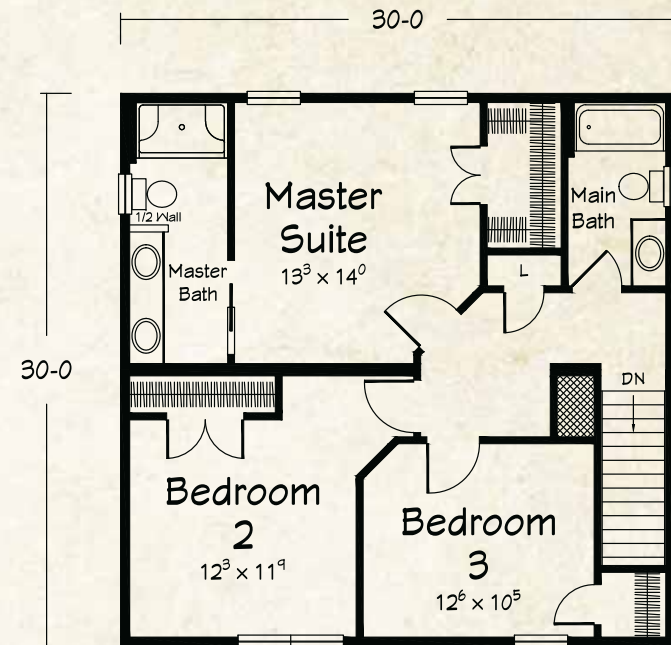
900 sq. ft. Second Floor Living Area

1800 sq. ft. Total

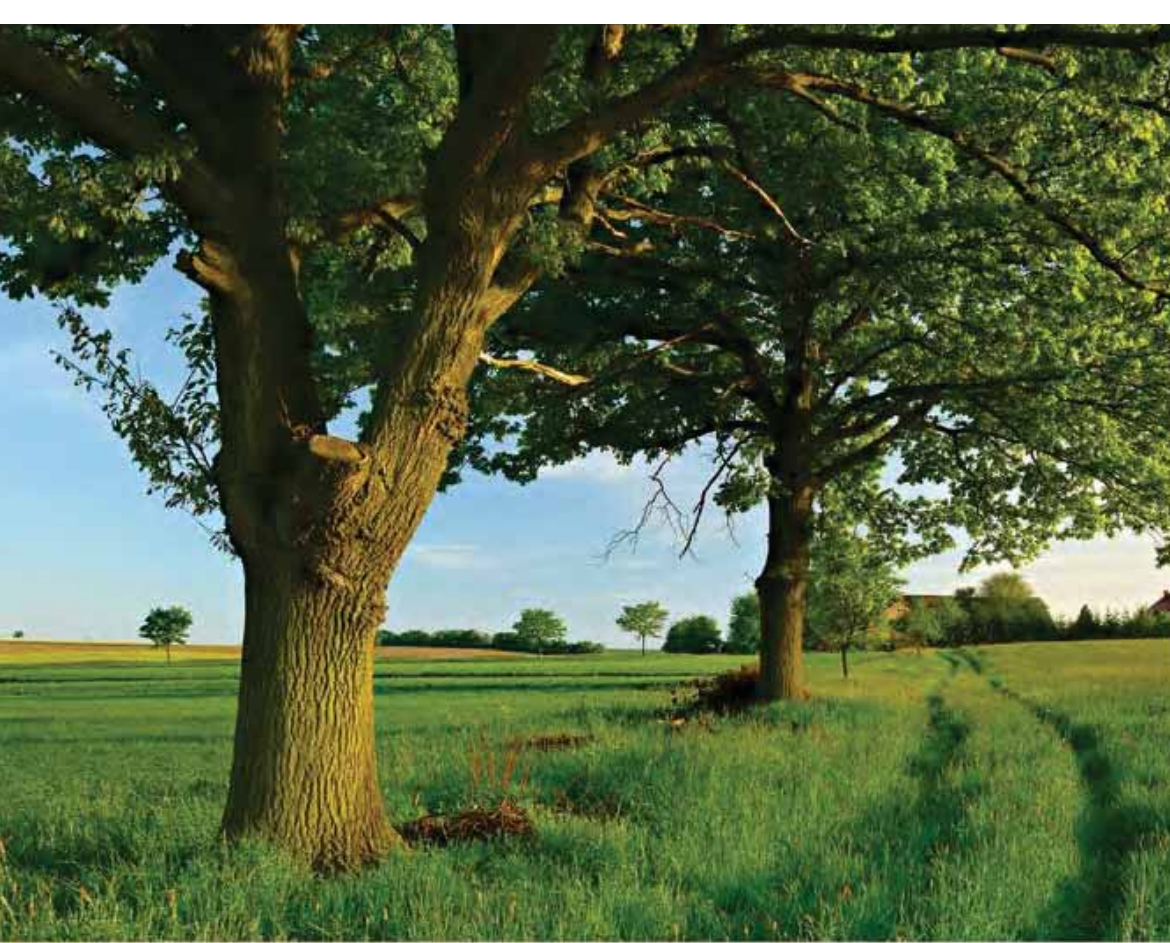
- 3 Bedrooms
- 2½ Baths



**Sage II
First Floor**



**Sage II
Second Floor**



*Your approved
Ritz-Craft
Homebuilder:*

Approved homebuilders are independent business entities and are not agents of Ritz-Craft Corporation.

Due to occasional updating of building codes and Ritz-Craft's continuous product improvement, specifications are subject to change without prior notification. Be sure to request a copy of current specifications from your selected homebuilder.

©2015 Ritz-Craft Corporation 0716

