

Lake & Lodge

COLLECTION



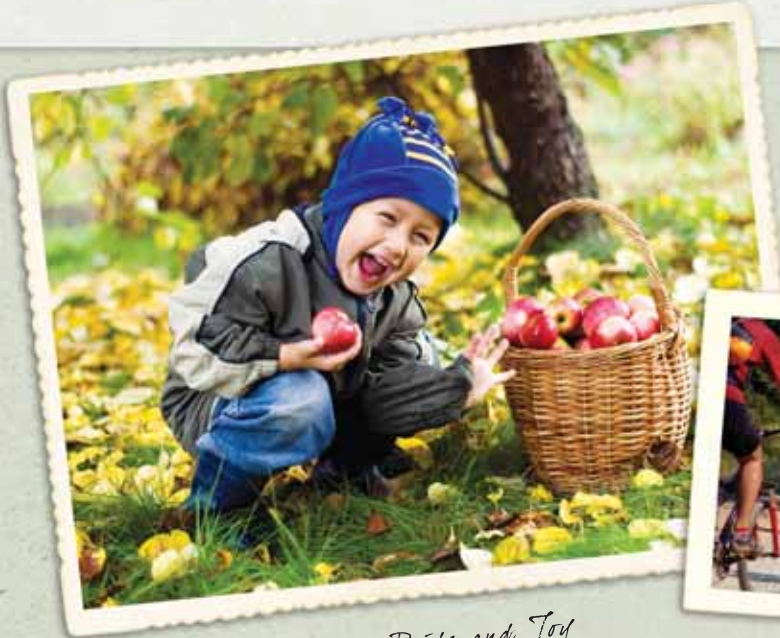
2013 JERRY ROULEAU EXCELLENCE
IN MARKETING AWARD FOR
PRESENTATION OF HOME PLANS



Ritz-Craft
CUSTOM HOMES

Lake & Lodge

COLLECTION



My Pride and Joy

My mountain home...

*is a reflection of my lifestyle,
a peaceful space in a special place,
my perfect getaway for every day.*



My Perfect Day



My Peaceful Retreat





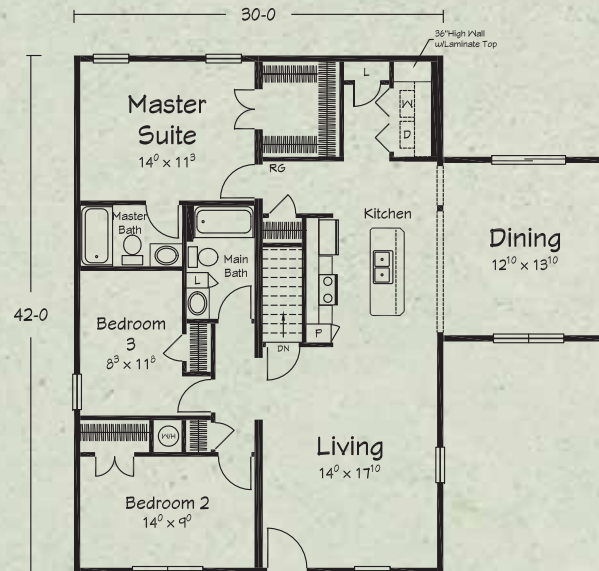
Applewood II Plan B shown with site-built porch

the Applewood II Ranch

The efficient Applewood plans provide open and connected living areas where family and friends can gather. Kitchen and dining areas offer access to your site-built, rear facing deck space.

Applewood II Plan B

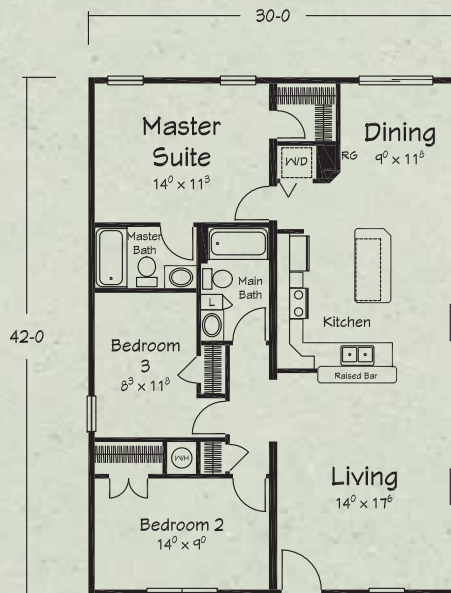
1462 sq. ft. Living



Applewood II Plan A

1257 sq. ft. Living

*(Crawl Space plan
only--no interior stair
location available)*



Unless otherwise noted, all "Lake & Lodge" home plans include an interior stair area providing access to your full/walk-out basement. Each plan can be modified for a crawl space foundation.



Shown with site-built porch

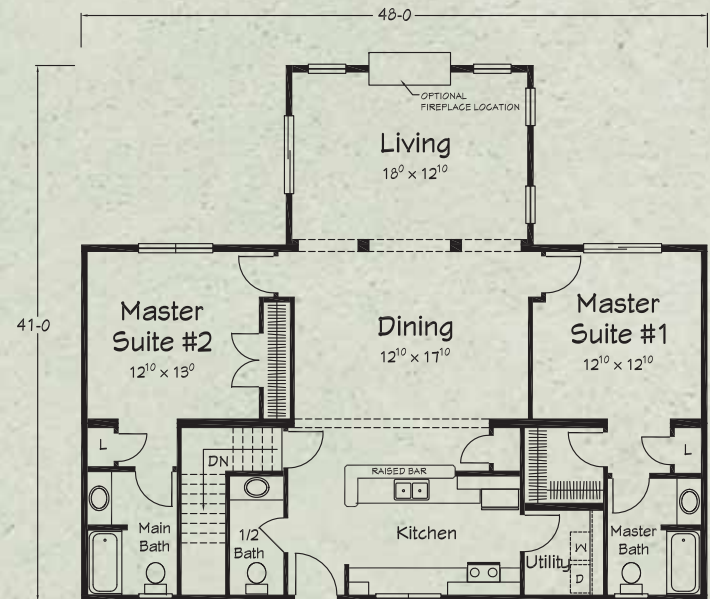


the River Bend Cabin

Whether your getaway home overlooks the ski slopes or the lake, you'll have a great view from the River Bend's rear facing bedrooms and great room. The plan is also great for sharing with its two separate master suites.

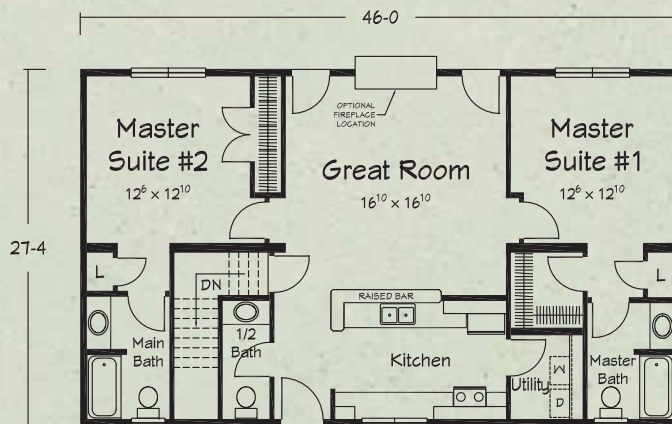
River Bend Plan B

1686 sq. ft. Living



River Bend Plan A

1257 sq. ft. Living



Artist renderings depict homes as they may be built on a typical site. Renderings may include optional or site installed features. Refer to Ritz-Craft print package and specifications and be sure to thoroughly discuss all aspects of your building project with your selected homebuilder.



Rear view shown with optional "7/12 true vault" with gable glass and site-built deck

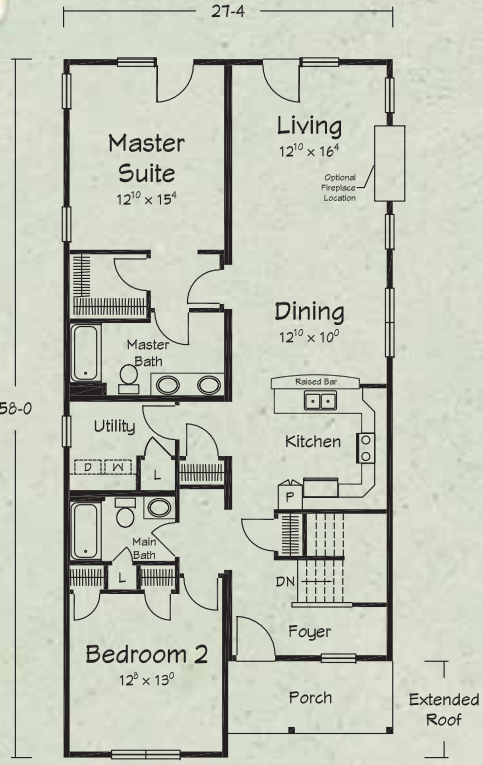
Plan B Elevation

the Sunrise-Sunset Cottage

Specially designed to make the most of a home site with a rear facing view, the Sunrise-Sunset plans provide a covered front porch on the entry end and open views from the master bedroom and main gathering areas. The double doors at the back of the house can give access to a site-built rear deck --- so, enjoy the view!

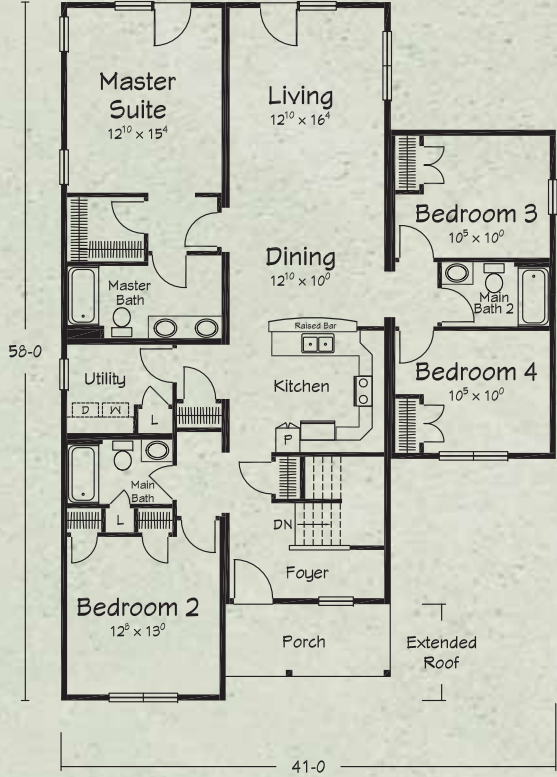
Sunrise-Sunset Plan A

1476 sq. ft. Living
82 sq. ft. Porch*
1558 Total



Sunrise-Sunset Plan B

1850 sq. ft. Living
82 sq. ft. Porch*
1932 Total



*Exterior grade porch framing, deck materials and posts must be ordered as options or site-finished.

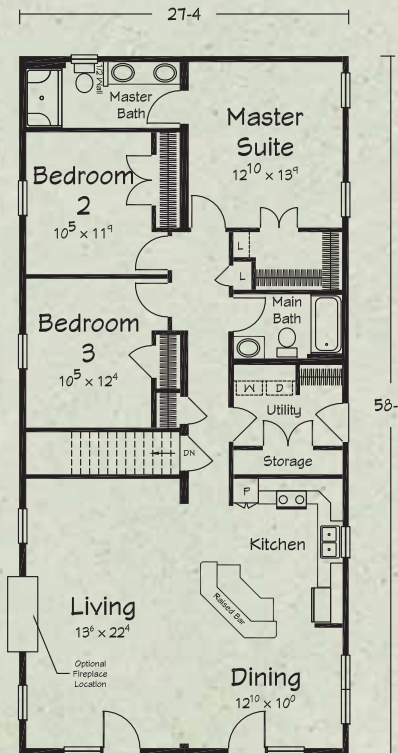




Shown with optional "7/12 true vault" and gable glass.

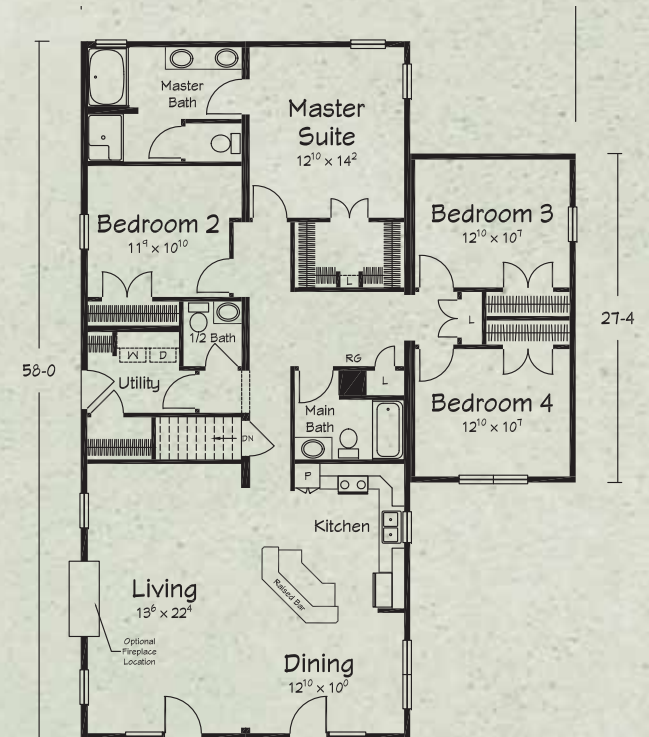
Woodlands II Plan A

1585 sq. ft. Living



Woodlands II Plan B

1961 sq. ft. Living



the Woodlands II Cottage

The Woodlands plans feature a wide open gathering area and large, comfortable bedrooms. You can add an optional vaulted ceiling and gable glass for volume and impact.



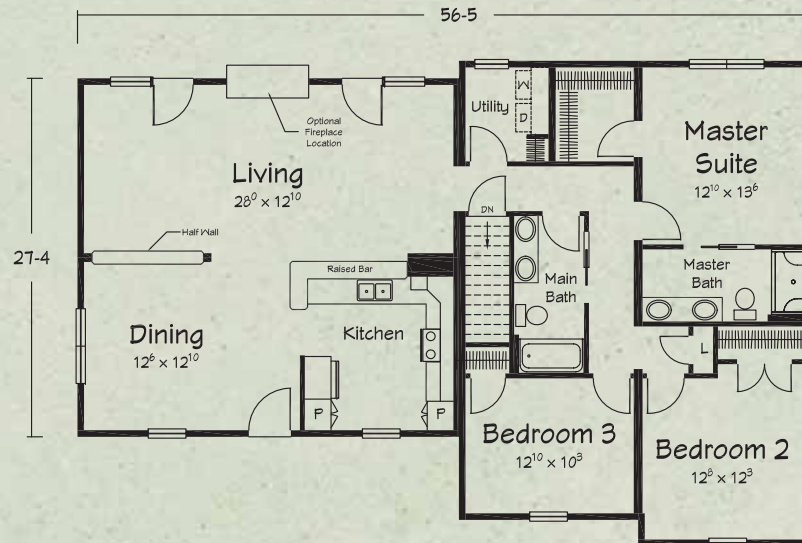
Shown with site-built wrap around porch

the Berkshire II

Bring the feel of the outdoors into your home with lots of wide open interior spaces and rear facing glass. The Berkshire's handsome exterior will welcome you and compliment your home site. You can enjoy family and entertain friends in style and comfort.

Berkshire II

1776 sq. ft. Living





Shown with site-built porch

the Skyview Cottage II

This cute and open cottage plan features a dramatic vaulted ceiling with a view of the upper level loft. The compact design is both comfortable and economical.

Skyview II Upper Level

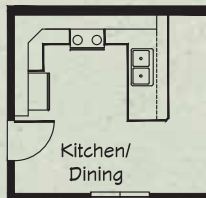
**Please note that the upper level area is designed for economical completion on-site. Refer to Ritz-Craft's print package and specifications for included materials and discuss all aspects of completion with your selected homebuilder.*

Skyview II Main Level

875 sq. ft. Living

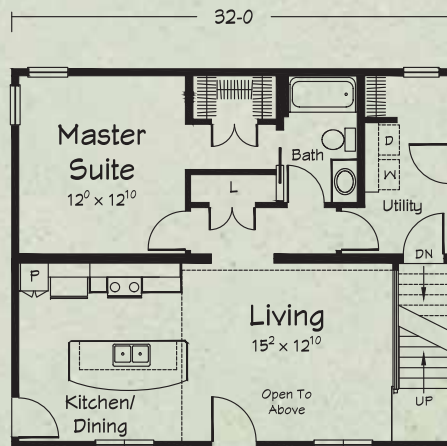
*Plus 661 sq. ft.
available at upper level

Optional Peninsula
Bar Kitchen

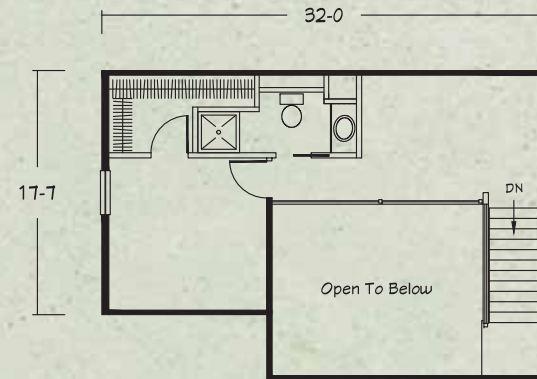


Kitchen/
Dining

27-4



12/12 pitch roof
is standard.





Shown with site-built porch



Rear Elevation

12/12 pitch roof is standard.

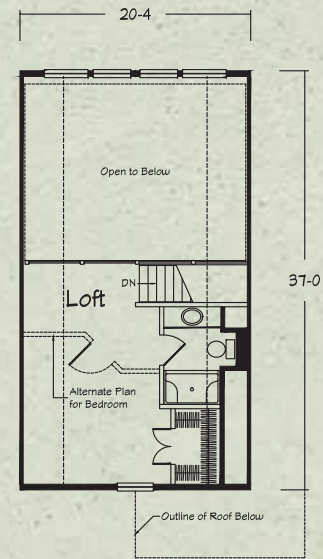
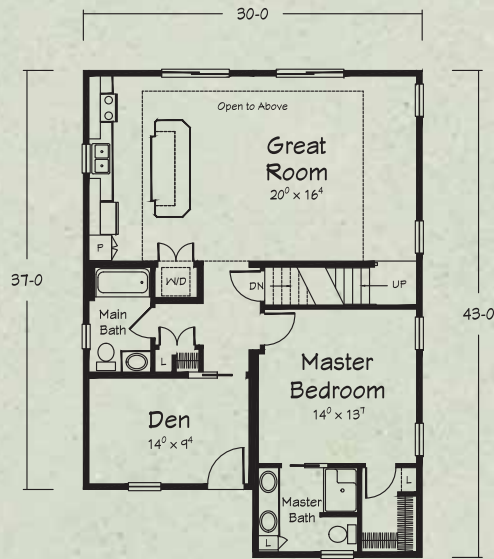
the Juniper Ridge II

Front entry to this plan is through a den that can double as a guest room. The vaulted, rear facing Great Room/Kitchen provides great views from the interior or from your site-added deck.

Juniper Ridge II Main Level

1197 sq. ft. Living

*Plus 754 sq. ft. available at upper level



Juniper Ridge II Upper Level

*Please note that the upper level area is designed for economical completion on-site. Refer to Ritz-Craft's print package and specifications for included materials and discuss all aspects of completion with your selected homebuilder.



Shown with site-built porch

the Oswego Cottage II

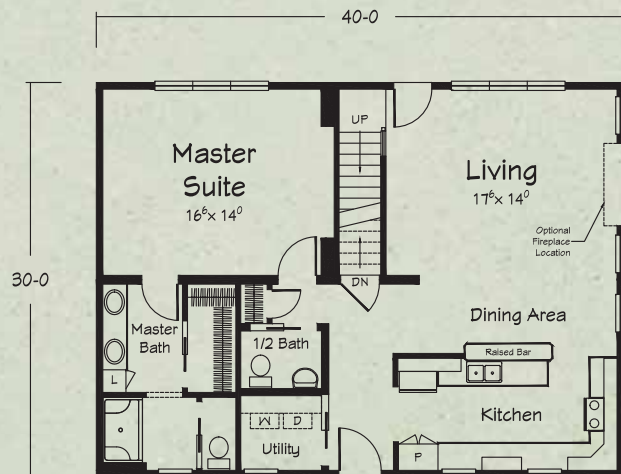
An open great room design provides unobstructed interior site lines between the kitchen, dining and living spaces. The rear facing living area and master bedroom windows provide great view opportunities and access to a site-added rear deck.

12/12 pitch roof is standard.

Oswego II Main Level

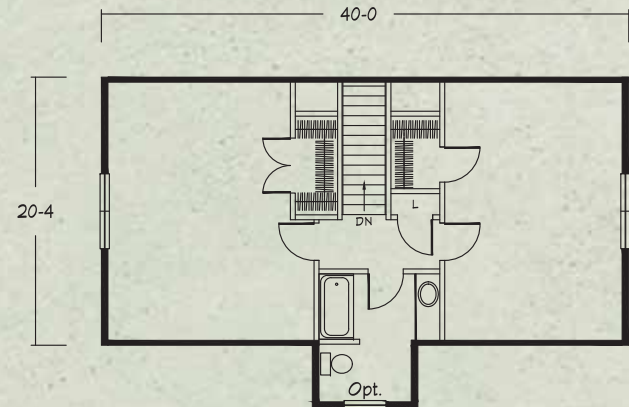
1197 sq. ft. Living

*Plus 813 sq. ft. available at upper level



Oswego II Upper Level

** Please note that the upper level area is designed for economical completion on-site. Refer to Ritz-Craft's print package and specifications for included materials and discuss all aspects of completion with your selected homebuilder.*



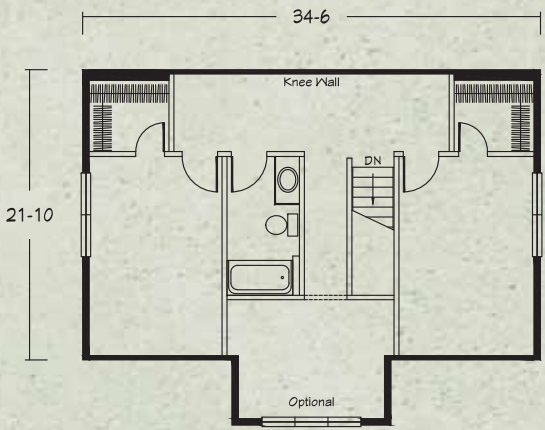


7/12 tri-mod roof pitch is standard. Optional 9/12 available.

**Craftsman Cottage II
Main Level**

1278 sq. ft. Living
184 sq. ft. Porch**
1462 Total

*Plus 754 sq. ft. available at upper level

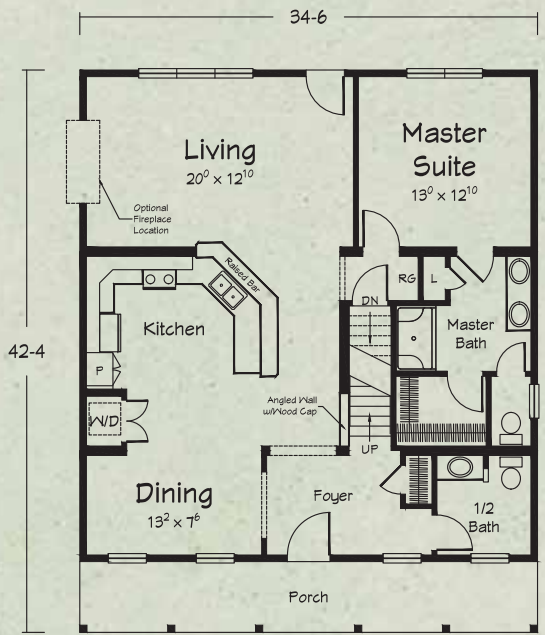


**Craftsman Cottage II
Upper Level**

* Please note that the upper level area is designed for economical completion on-site. Refer to Ritz-Craft's print package and specifications for included materials and discuss all aspects of completion with your selected homebuilder.

the **Craftsman Cottage II**

Classic Craftsman styling and the friendly "big ol' front porch" make this home a true country charmer. A nice open floor plan with gathering areas on both levels make this a wonderful plan for family get togethers and for entertaining. The rear facing living area can offer access to a large deck or patio.



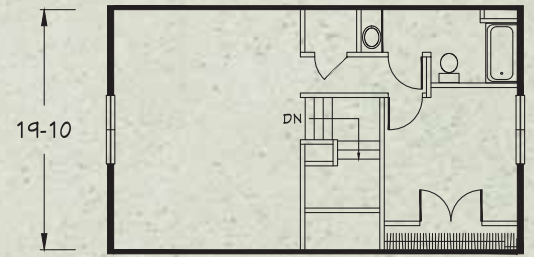
**Exterior grade porch framing, deck materials and posts must be ordered as options or site-finished.

EXTENDED ROOF





7/12 tri-mod roof pitch is standard.
Optional 9/12 available.



**Cozy Cabin
Main Level**

1297 sq. ft. Living
120 sq. ft. Porch**

1417 Total

*Plus 761 sq. ft. available at upper level

**Cozy Cabin
Upper Level**

* Please note that the upper level area is designed for economical completion on-site. Refer to Ritz-Craft's print package and specifications for included materials and discuss all aspects of completion with your selected homebuilder.

the **Cozy Cabin**

This cute and cozy plan can be built on home sites where a smaller building footprint is advantageous. The home's open floor plan provides two bedrooms and baths on the main level with a generous and flexible upper level, imagination space, for expansion.



**Exterior grade porch framing, deck materials and posts must be ordered as options or site-finished.

Artist renderings depict homes as they may be built on a typical site. Renderings may include optional or site installed features. Refer to Ritz-Craft print package and specifications and be sure to thoroughly discuss all aspects of your building project with your selected homebuilder.



Shown with site-built deck

the Highspire II and Herron II Chalets

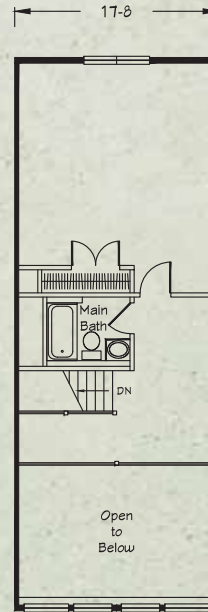
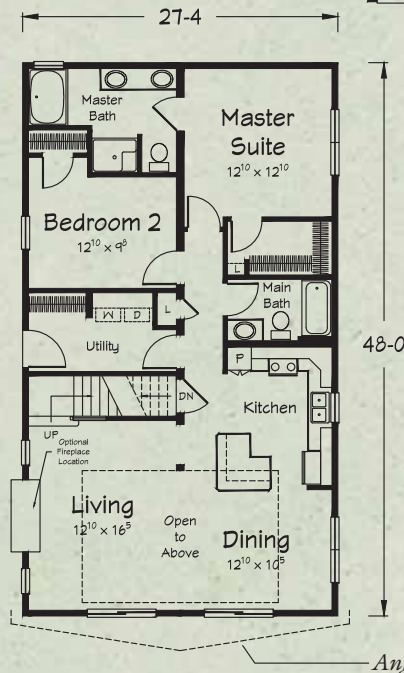
These homes are updated versions of our most popular Cape Chalet plans. Each home features generously sized and open gathering spaces, along with a dramatic, two-story vaulted area. The upper level can be finished to include an additional bedroom, full bath and an overlooking loft. The Herron II includes an entry door from the "driveway end" which provides added flexibility on many home sites.

12/12 pitch roof is standard.

Highspire II Chalet Main Level

1312 sq. ft. Living

*Plus 625 sq. ft. available at upper level



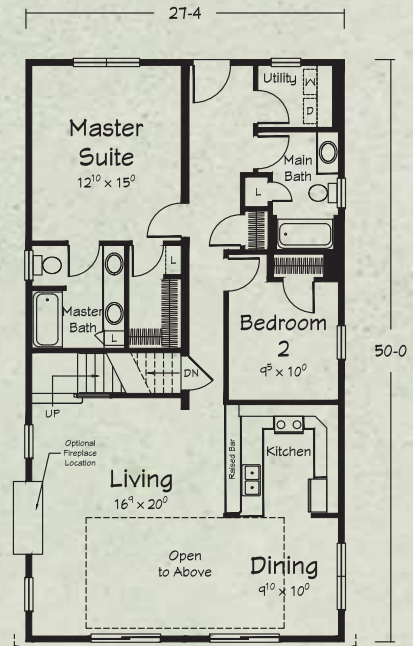
Herron II and Highspire II Upper Level

* Please note that the upper level area is designed for economical completion on-site. Refer to Ritz-Craft's print package and specifications for included materials and discuss all aspects of completion with your selected homebuilder.

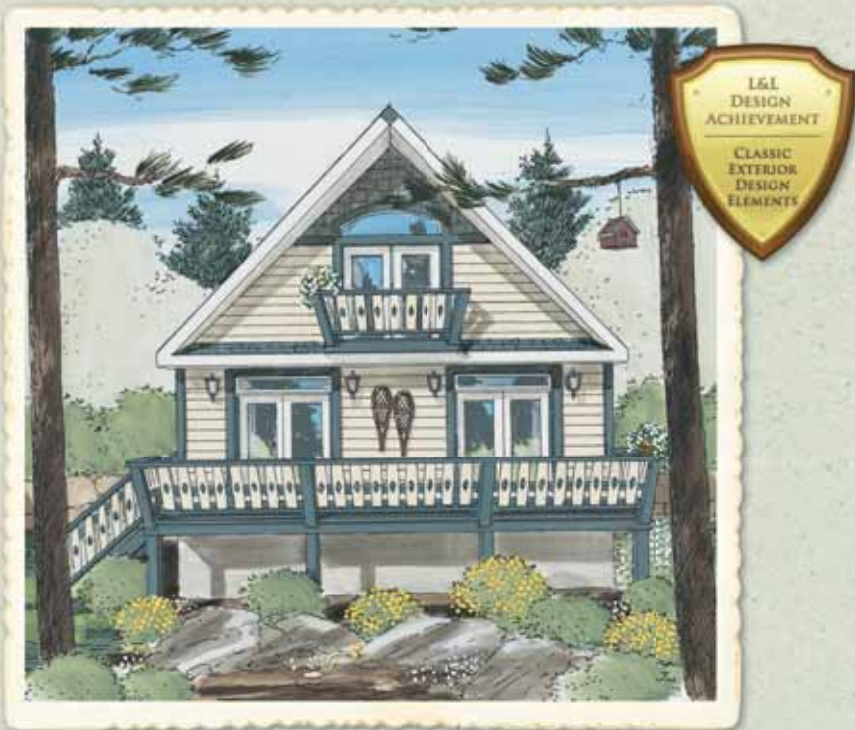
Herron II Chalet Main Level

1366 sq. ft. Living

*Plus 695 sq. ft. available at upper level



Angled prow standard



Shown with site-built deck

the Alpenhof Chalet

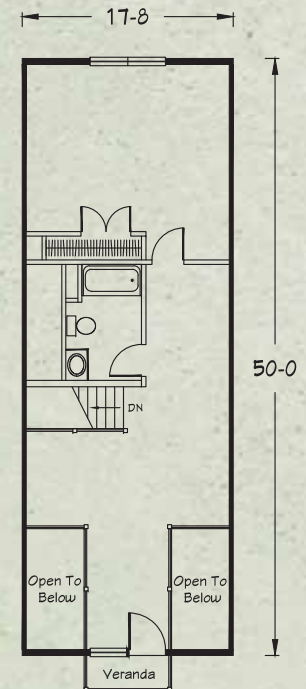
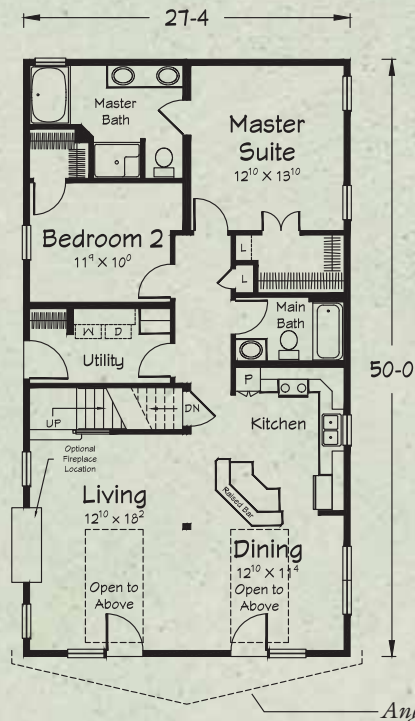
Our Alpenhof revisits the classic style of the Swiss Chalet. The exterior features an upper level, step-out veranda and oversize angled-prow gable. At the interior, the veranda is connected to an upper level loft area by way of a dramatic bridge. The Alpenhof's charming, fun styling beckons to all who approach.

12/12 pitch roof is standard.

Alpenhof Chalet Main Level

1367 sq. ft. Living

*Plus 773 sq. ft. available at upper level



Alpenhof Chalet Upper Level

* Please note that the upper level area is designed for economical completion on-site. Refer to Ritz-Craft's print package and specifications for included materials and discuss all aspects of completion with your selected homebuilder.

Angled prow standard

Artist renderings depict homes as they may be built on a typical site. Renderings may include optional or site installed features. Refer to Ritz-Craft print package and specifications and be sure to thoroughly discuss all aspects of your building project with your selected homebuilder.



the Olympia II

Boasting a clever kitchen and open floor plan design, this cape has all the markings of a great mountain cottage. Relax in your comfortable master suite or kick back in the spacious loft. However you choose to relax, the Olympia fits the bill.

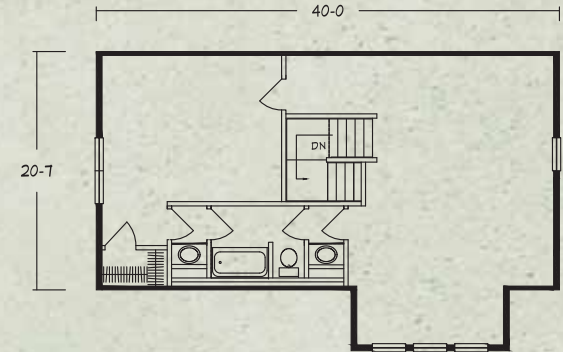
7/12 tri-mod roof pitch is standard. Optional 9/12 available.

Olympia II Main Level

1519 sq. ft. Living
152 sq. ft. Porch**

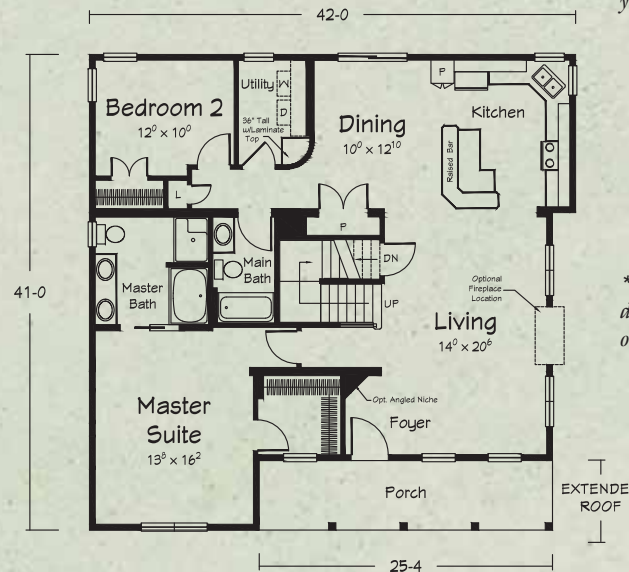
1671 Total

***Plus 895 sq. ft. available at upper level**



Olympia II Upper Level

** Please note that the upper level area is designed for economical completion on-site. Refer to Ritz-Craft's print package and specifications for included materials and discuss all aspects of completion with your selected homebuilder.*



****Exterior grade porch framing, deck materials and posts must be ordered as options or site-finished.**



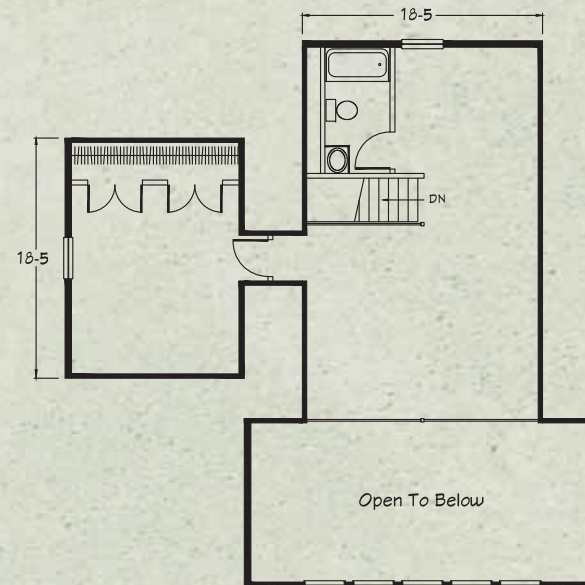
Shown with site-built deck

12/12 pitch roof is standard.

Tree Tops Lodge Main Level

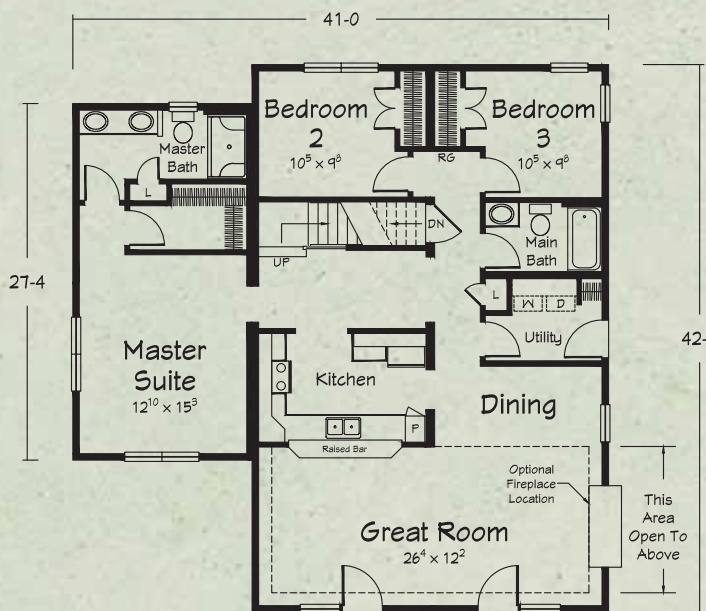
1522sq. ft. Living

*Plus 811 sq. ft. available at upper level



the Tree Tops Lodge

The handsome Tree Tops Lodge is a larger chalet style home with elegant custom touches, inside and out. The gable at the great room includes a unique boxed-prow roofline and dramatic, eight-piece window array. The master bedroom and gathering area face your special views as does the spectacular, upper level overlook loft.



Tree Tops Lodge Upper Level

* Please note that the upper level area is designed for economical completion on-site. Refer to Ritz-Craft's print package and specifications for included materials and discuss all aspects of completion with your selected homebuilder.

Artist renderings depict homes as they may be built on a typical site. Renderings may include optional or site installed features. Refer to Ritz-Craft print package and specifications and be sure to thoroughly discuss all aspects of your building project with your selected homebuilder.



Shown with site-built wrap around porch



View from right side gable showing side entry porch



12/12 pitch roof is standard.

the Grand Teton II

This transitional style home includes design elements reminiscent of the great Craftsman and Adirondack mountain homes. The Grand Teton can be best appreciated on a home site with great views in all directions. This large, upscale home will welcome family and friends and compliment your special site.

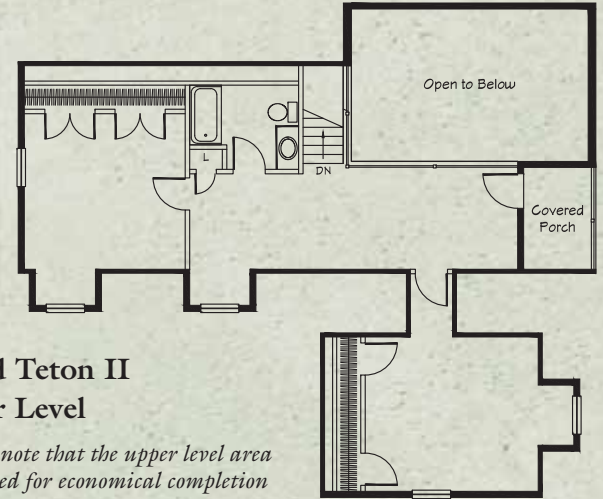
**Exterior grade porch framing, deck materials and posts must be ordered as options or site-finished.

Grand Teton II Main Level

1685 sq. ft. Living
155 sq. ft. Porch**

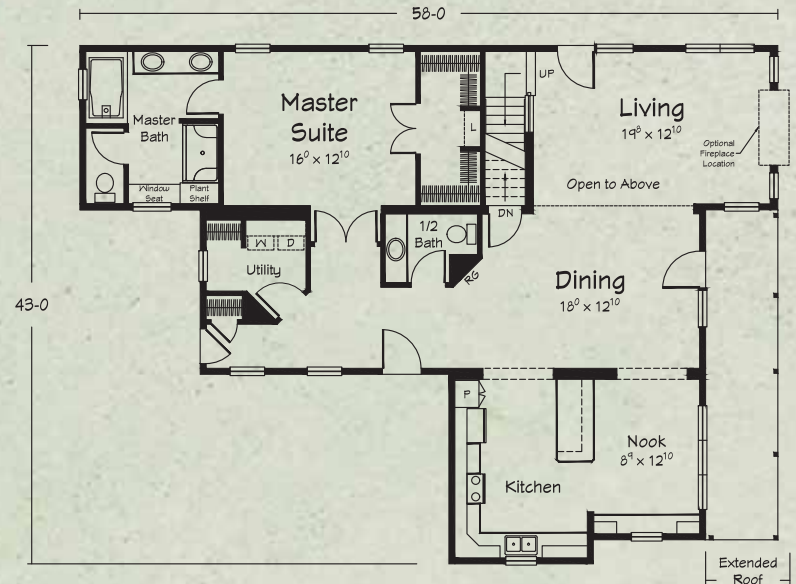
1840 Total

*Plus 893 sq. ft. available at upper level



Grand Teton II Upper Level

* Please note that the upper level area is designed for economical completion on-site. Refer to Ritz-Craft's print package and specifications for included materials and discuss all aspects of completion with your selected homebuilder.





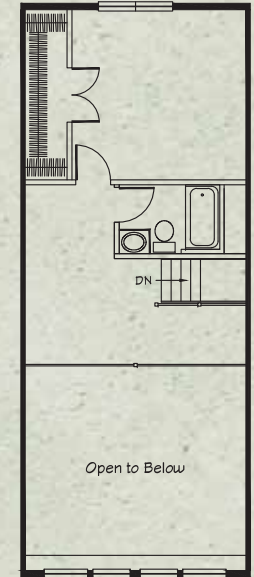
Shown with site-built deck

the Northwoods Chalet

The Northwoods Chalet is an expanded version of our most popular chalet plans. The separate wings provide space for a generous master suite and for a large kitchen/dining area. The upper level can be finished as a large, single-room loft or with a third bath and fourth bedroom.

Northwoods Chalet Upper Level

** Please note that the upper level area is designed for economical completion on-site. Refer to Ritz-Craft's print package and specifications for included materials and discuss all aspects of completion with your selected homebuilder.*

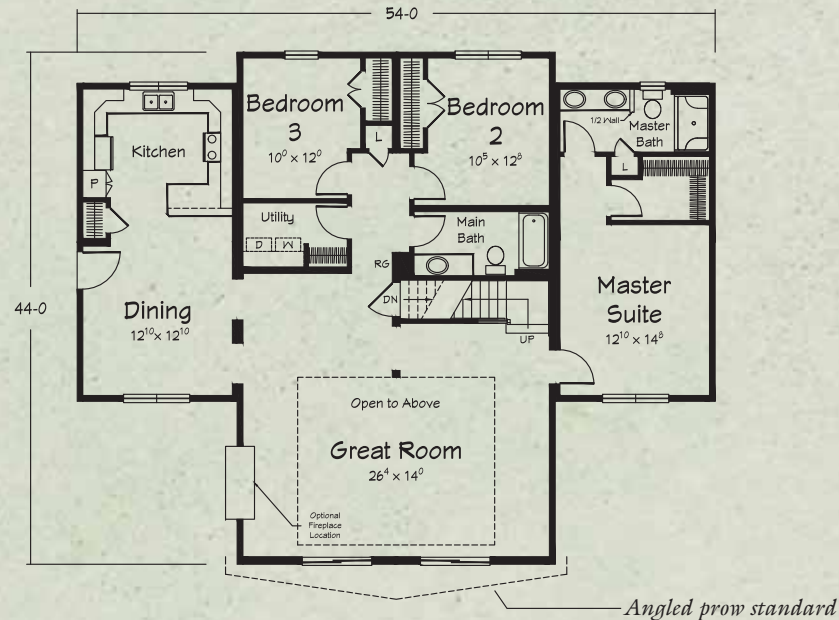


This plan includes a combination of 12/12 and 7/12 roof pitch areas.

Northwoods Chalet Main Level

1955 sq. ft. Living

** Plus 773 sq. ft. available at upper level*



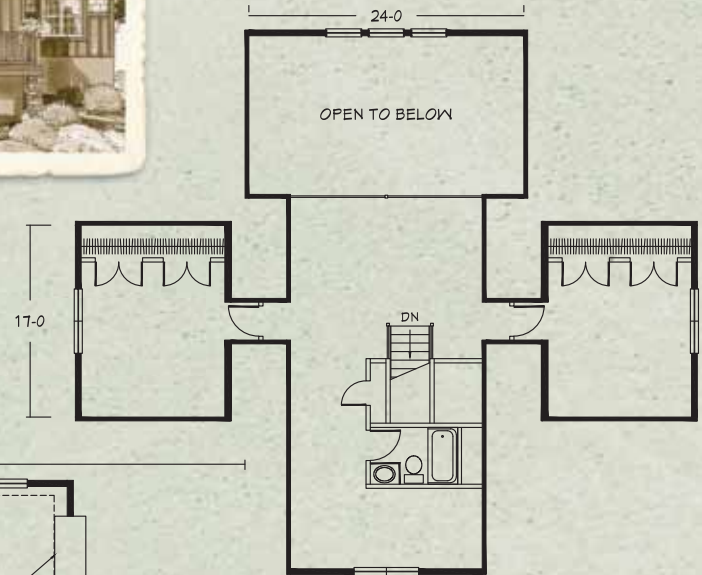
Artist renderings depict homes as they may be built on a typical site. Renderings may include optional or site installed features. Refer to Ritz-Craft print package and specifications and be sure to thoroughly discuss all aspects of your building project with your selected homebuilder.



Rear view shown with site-built deck

Grand Vista Chalet II Upper Level

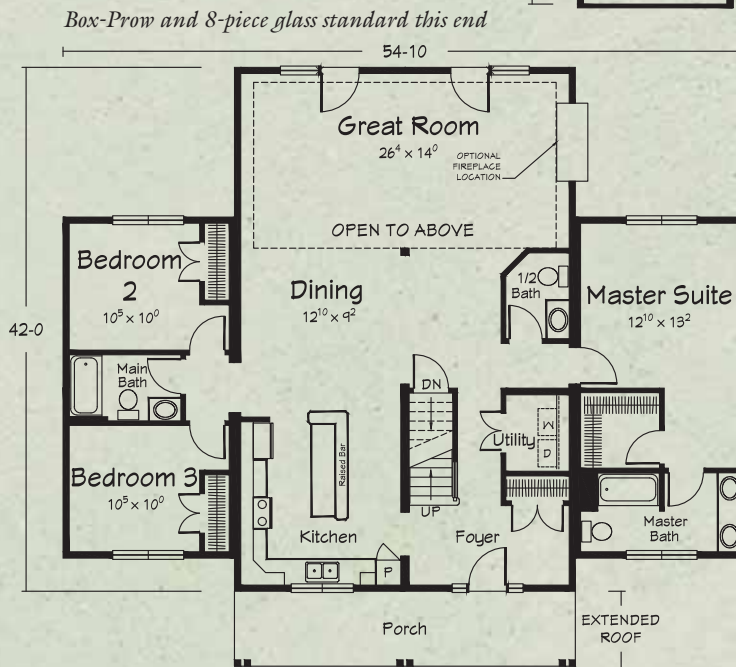
* Please note that the upper level area is designed for economical completion on-site. Refer to Ritz-Craft's print package and specifications for included materials and discuss all aspects of completion with your selected homebuilder.



the Grand Vista II Chalet

The largest of our chalet plans, the Grand Vista features a wide covered front porch on the entry/approach side and our dramatic double door and glass array to face your favorite views. With completion of the upper level areas, this large family home can include five bedrooms plus three full baths and a powder room. The master bedroom, great room and upper level loft are all positioned to take full advantage of the rear views.

All roof areas are 12/12 pitch.



Grand Vista Chalet II Main Level

1900 sq. ft. Living
164 sq. ft. Porch**
2164 Total

*Plus 1110 sq. ft. available at upper level

**Exterior grade porch framing, deck materials and posts must be ordered as options or site-finished.



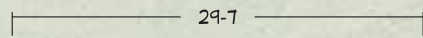
Shown with site-built porch

the Timber Ridge II Two Story

This cozy, two-story cabin is both charming and efficient. The small footprint plan works well on challenging building sites, while providing larger house features in a "less and be more" package. You may not want to leave your perfect little getaway cabin.

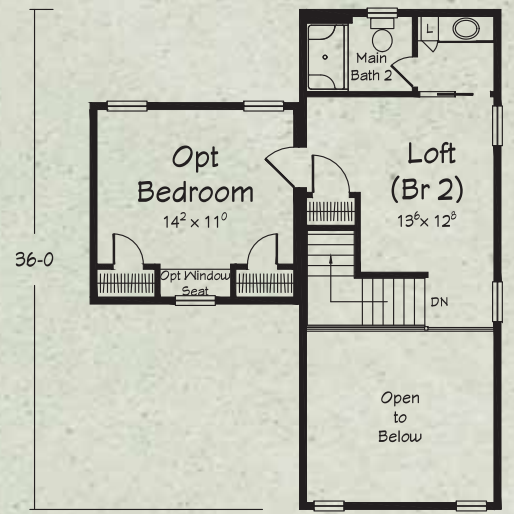
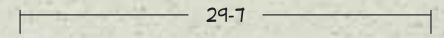
Timber Ridge II Two Story

741 sq. ft. 1st Floor Living
 556 sq. ft. 2nd Floor (w/Opt. BR)
 1296 Total



Timber Ridge II Second Floor

336 sq. ft. (STD)
 556 sq. ft. (with Optional BR)



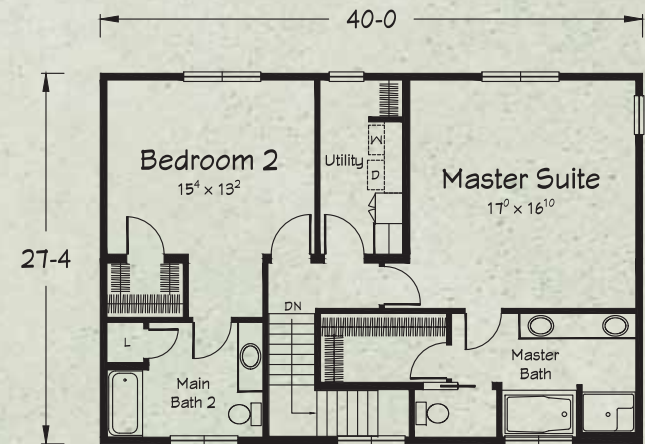


Shown with site-built wrap around porch

the Mt. Laurelle Two Story

Your second floor master suite can be the ultimate room with a view on your special home site. This nice sized two-story plan also features a first floor guest bedroom and a wide open great room. You'll enjoy all four seasons in this classic mountain retreat.

Mt. Laurelle Second Floor



Mt. Laurelle Two Story

1093 sq. ft. 1st Floor
 1093 sq. ft. 2nd Floor
 2186 Total





Shown with site-built wrap around porch



Back Deck View

This plan includes a combination of 12/12 and 7/12 roof pitch areas.

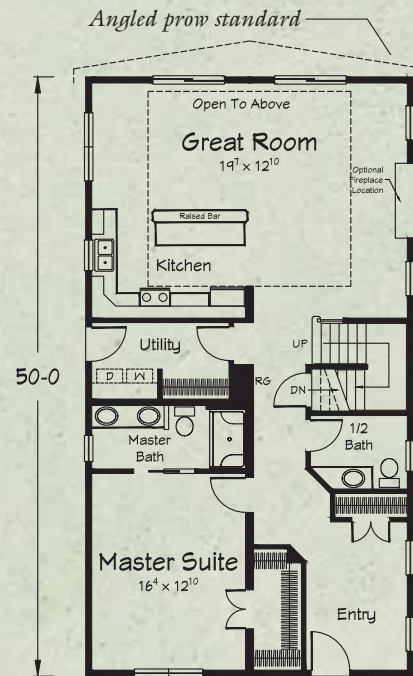
Blue Ridge Two Story

1366 sq. ft. 1st Floor
820 sq. ft. 2nd Floor

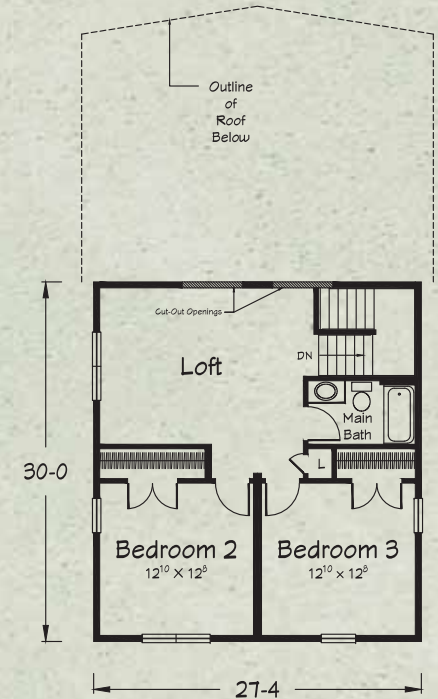
2186 Total

the Blue Ridge Two Story

This home is best described as a country style two-story with a chalet style great room off the back. The first floor features an elegant entry, master suite and great room. Upstairs, you'll find a comfortable loft along with two bedrooms and an additional bath. You'll enjoy the style and livability of this uniquely designed plan.



Blue Ridge Second Floor



Artist renderings depict homes as they may be built on a typical site. Renderings may include optional or site installed features. Refer to Ritz-Craft print package and specifications and be sure to thoroughly discuss all aspects of your building project with your selected homebuilder.

About Ritz-Craft Custom Homes

Founded in 1954, and still family owned and operated, Ritz-Craft specializes in “system built homes” that are custom built off-site in one of five climate controlled facilities. The components are then transported to the site, installed on the foundation and completed by your selected Ritz-Craft builder.

Ritz-Craft home plans offer wide variety and are designed to embrace each region’s architecture while offering many aesthetically pleasing and functional features. Building your new home with Ritz-Craft’s custom designed modules offers many advantages over conventional “stick by stick” site assembly. Our precision construction methods take place under roof in well lighted, climate controlled and efficient workstations that allow high quality and high efficiency. In fact, our quality assurance process includes code compliance inspections by a state licensed third party agency and over twenty-five key inspection checkpoints monitored by our in-house Quality Assurance Team. Ritz-Craft also utilizes many Green Friendly materials and processes to save energy, recycle materials, and to manage waste in an environmentally responsible manner.

When you choose Ritz-Craft, you’re selecting an experienced company with a commitment to quality and to the future. We have grown from a modest one-plant operation into a thriving enterprise with over one million square feet of climate controlled production space in five modern, highly mechanized plants. Some people ask if our homes are built as well as a site built home....and our proud reply is “yes, --- as well, and in many respects, better.” We say that with confidence knowing our process simply cannot be matched with in-field home building methods.

We’re proud of our custom built single story, Cape Cod style, and two story homes and we sincerely thank you for considering Ritz-Craft for your next home.



Paul D. John, President/CEO
Eric John, Vice President



RITZ-CRAFT FAMILY OF COMPANIES

Our family of companies also includes Ritz-Trans,
Legacy Crafted Cabinets and Legacy Building Products.





*Your approved
Ritz-Craft
Home Builder:*

Approved homebuilders are independent business entities and are not agents of Ritz-Craft Corporation.

Due to occasional updating of building codes and Ritz-Craft's continuous product improvement, specifications are subject to change without prior notification. Be sure to request a copy of current specifications from your selected homebuilder.

©2015 Ritz-Craft Corporation 010115

