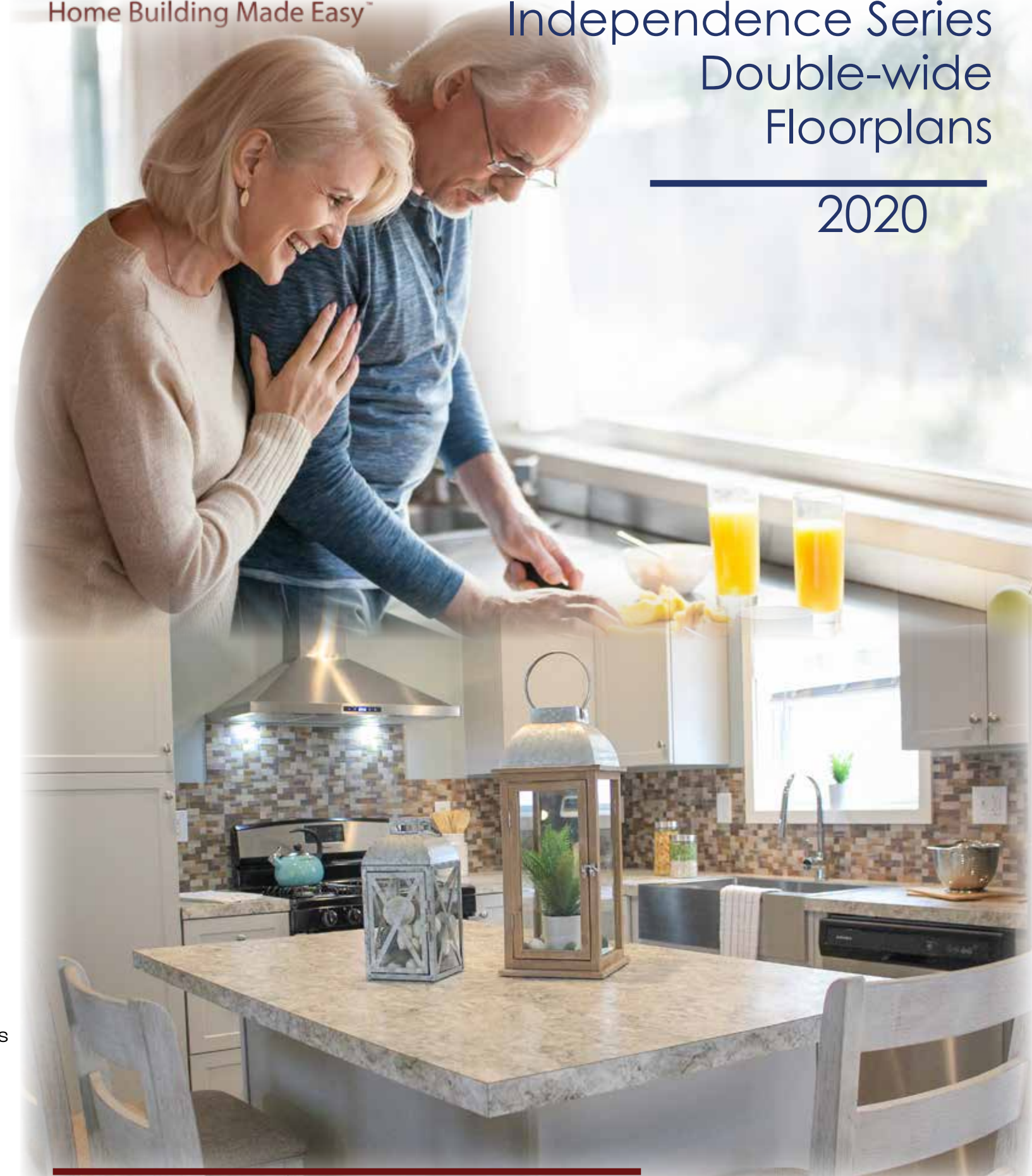




Independence Series Double-wide Floorplans

2020

**YOUR APPROVED
MASTER-CRAFT
HOMEBUILDER:**



Approved homebuilders are independent business entities and are not agents of Master-Craft Corporation or its subsidiaries.

Due to occasional updating of building codes and Master-Craft's continuous product improvement, specifications are subject to change without prior notification. Be sure to request a copy of current specifications from your selected homebuilder.

© 2020 Ritz-Craft Corporation 52020PA



Meet Master-Craft: the Newest Collection of Homes from Ritz-Craft Homes

Ritz-Craft is excited to introduce this all new collection of home designs which breathe new life into our company's heritage. Founded in 1954, Ritz-Craft has remained a family owned and operated company with a mission to provide quality and affordable housing solutions nationwide. Through a fanatical focus on the needs of our customers, Ritz-Craft has become known throughout the home building industry for providing unmatched value to both home builders and home buyers.

In today's economy, as the price for labor and material continue to rise, it can become difficult for many home builders to provide Americans with the quality home they deserve at a reasonable price. With a focus on "Home Building Made Easy," this new, Master-Craft collection will focus entirely on entry-level single and double section manufactured homes and simplified modular designs.

As a result, we are proud to note that the standard construction of Master-Craft collection products will provide numerous, value-added features in both single and double section manufactured homes, as well as new modular designs, including:

- Stainless Steel Appliances
- Wider, Arts & Crafts Casing and Base Molding
- Smooth Finished Drywall Ceilings
- European-Style Frameless Cabinets
- 16" O.C. Wall Construction with 2x6 Exterior Walls
- Many more amenity packages, options and selections
- These standards dramatically separate Master-Craft from the rest of the manufacturers competing in this market.

All Master-Craft collection plans will be backed by Ritz-Craft's award-winning tools and services, as well as our talented, in-house support departments. We're proud of this new, reimagined line of manufactured housing solutions and we are grateful for the opportunity to deliver you a Master-Craft home.

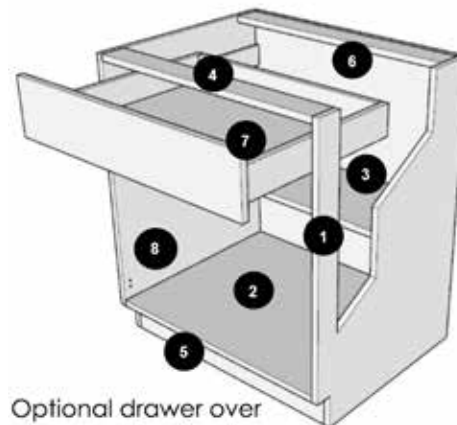


European Technology Meets American Craftsmanship

Legacy Crafted Cabinets, a member of the Ritz-Craft family of companies has created an entirely new line of cabinetry solutions for the Master-Craft collection of homes. The new Legato Cabinetry boasts an imaginative, frameless cabinet construction, as well as several value-added standards:

- Full-storage access
- Soft-close and self-close doors and drawers
- Adjustable base and overhead shelves with metal shelf clips
- Three standard colors, including white, gray, and a modern wood grain finish.

The look and functionality of cabinets helps create the heart of every home, and this new Legato Cabinetry by Legacy Crafted cabinets is proof that it is possible to promote affordability without sacrificing form or limiting function.



Optional drawer over door construction shown

Legato
CABINETRY

Independence Specifications Community DW

EXTERIOR & CONSTRUCTION

- 30 lb. Roof Load
- 3/12 (Nominal) Roof at 24" O.C.
- Roof Sheathing 7/16" OSB w/ H-Clips
- Architectural Shingles
- Overhangs: 8" Front & Rear, 8" on Gable Ends (Fixed)
- Exterior Walls: 2x6 at 16" O.C.
- Sidewall & Endwall Sheathing: 7/16 OSB
- Floor Joists: 2x6 at 16" O.C.
- Decking: 19/32" OSB
- Porch Floor Decking: 5/4 x 6 Treated Lumber Decking - Per Plan
- Porch Railing: White Vinyl Porch Post & Rail System - Per Plan
- White Drip Edge, Soffit, and Fascia
- Siding: 4/4 Shiplap
- Frost Proof Faucet: One
- Shutters: 15" on Front Door side of Home
- Windows: Low E/Argon Gas Filled White Single Hung Vinyl Window
- Front Door- 3/0x6/8 FBGL Front Door w/Peep and Wood Jambs
- Rear Door- 3/0x6/8 FBGL Door w/Wood Jambs
- Exterior Locksets: Nickel
- Exterior Deadbolts: Nickel
- Exterior Light: Front/Rear Door, Patio Door—Per Plan
- Recessed Spot w/Diffuser in Porch Ceiling

INSULATION

- Ceiling Insulation: R30
- Exterior Walls: R-19
- Floor Insulation: R-22

INTERIOR

- Interior Partitions: 16" O.C.
- Walls: 3/8" VOG (1/2 Smooth Drywall Optional in High Impact Areas or T/O)
- 8' Sidewall w/ Smooth Flat Ceiling
- Carpet Pad: 3/8" Rebond (5lb)
- Vinyl Floor Coverings in Wet Areas
- Carpet: 16oz
- Interior Doors: White 2-Panel Raised Square w/3-Mortised Hinges
- 2/6 T/O (3/0 Per Plan)
- Furnace Door: White 2-Panel Door w/Grille
- Interior Molding: 2" Case
- Interior Molding: 3-1/4" Base
- 3-5/8" Crown Molding T/O
- Drapes/Mini Blinds T/O
- Wire Shelves: Linens, Pantry, Closets
- Wire Shelf Over Washer/Dryer Area
- Interior Locksets: Nickel
- Privacy Locks: Bath Doors
- Ceiling Light: LEDs in Hallway, Utility, WIC, Pantry per Plan
- Switched Receptacle Bedrooms
- Hanging Light—Dining/Breakfast Areas

KITCHEN

- Wire & receptacle for Range: 110V
- Appliance Package—Stainless Steel
 - 36" Stainless Steel Chimney Style Range Hood
 - Gas Range
 - 18 Cubic Ft Refrigerator
 - Dishwasher Optional (Cabinet Standard)
- Countertop: Laminate
- Backsplash: Matching Laminate
- Edging: Square Edge- Matching Laminate
- Kitchen: 6" Stainless Steel Double Bowl
- Cabinets: Legato Series Cabinets from Legacy Crafted Cabinets
 - 30" Wall Cabinets Standard with Crown
 - Soft/Self Close Adjustable Hinge Cabinet Doors/Drawers
 - Adjustable Shelves
 - Extra Deep Drawer Boxes w/ Drawer over Door Option Available
- Kitchen Faucet—Single Lever Faucet -Chrome
- Standard Series Cabinet Pulls
- Recessed LEDs Throughout Kitchen

BATHS

- Bath Vanity Faucet: Center-set Lav Faucets-Chrome
- Furniture Style Vanity - Master bath
- Shower Faucet: Chrome
- Tub/Shower Faucet: Chrome
- Pencil Edge Mirrors
- Lav Bowls: Porcelain w/ Pop Up Drain Assembly
- 1-Piece Fiberglass Tub/Shower Per Plan
- 1 Piece Fiberglass Shower Per Plan
- Elongated Porcelain Water Closet
- Vanity Lights: 2 Bulb (Nickel)
- Bath Vent Fan: Fan w/Light

UTILITIES

- Exterior GFCI Receptacle - 1 Standard
- Washer Hookup Wire & Plumb Washer/Dryer
- Wire for Dryer- 220v w/Standard Utility
- Exterior Dryer Vent Kit
- "Toggle" Switched T/O
- Thermostat
- 100 AMP Panel Box: Installed /White Metal Door
- Water Heater: 30 Gallon Electric- Installed
- Installed Drain Pan w/PVC Drain Under Water Heater
- Individual Shut Off Valves at Sinks and Toilets
- Central Water Shut Offs for Tubs and Showers
- Furnace: Gas
- Insulated Heat Duct w/ Floor Registers
- Ventilair III System

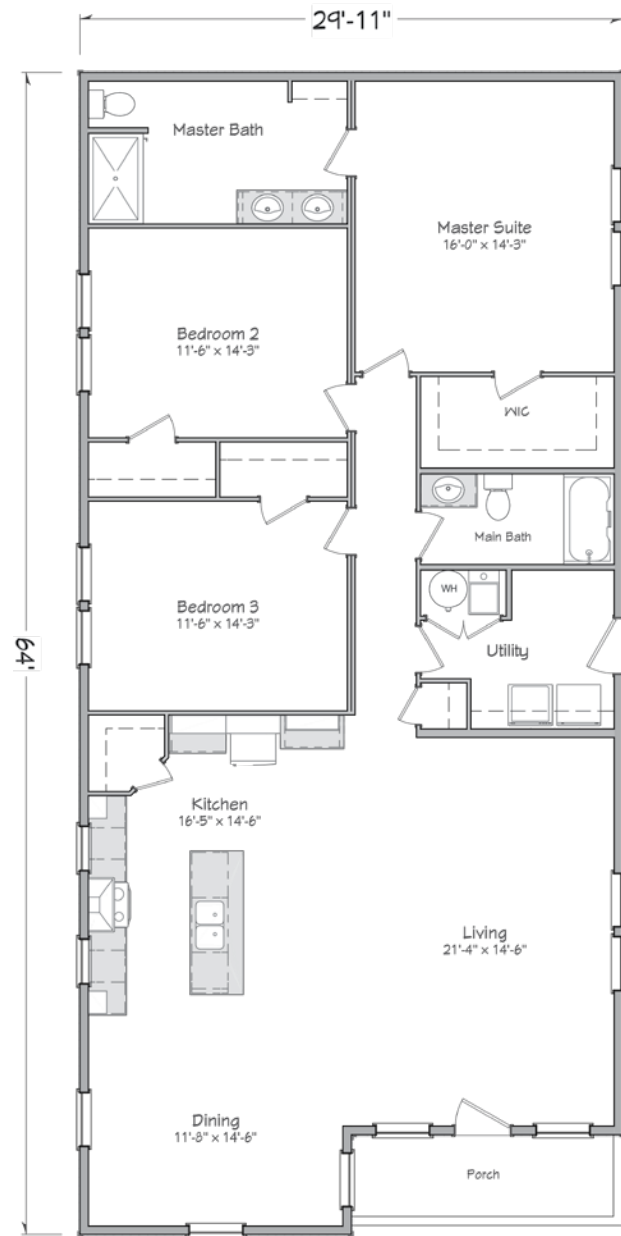
MISCELLANEOUS

- Shingle over ridge vent

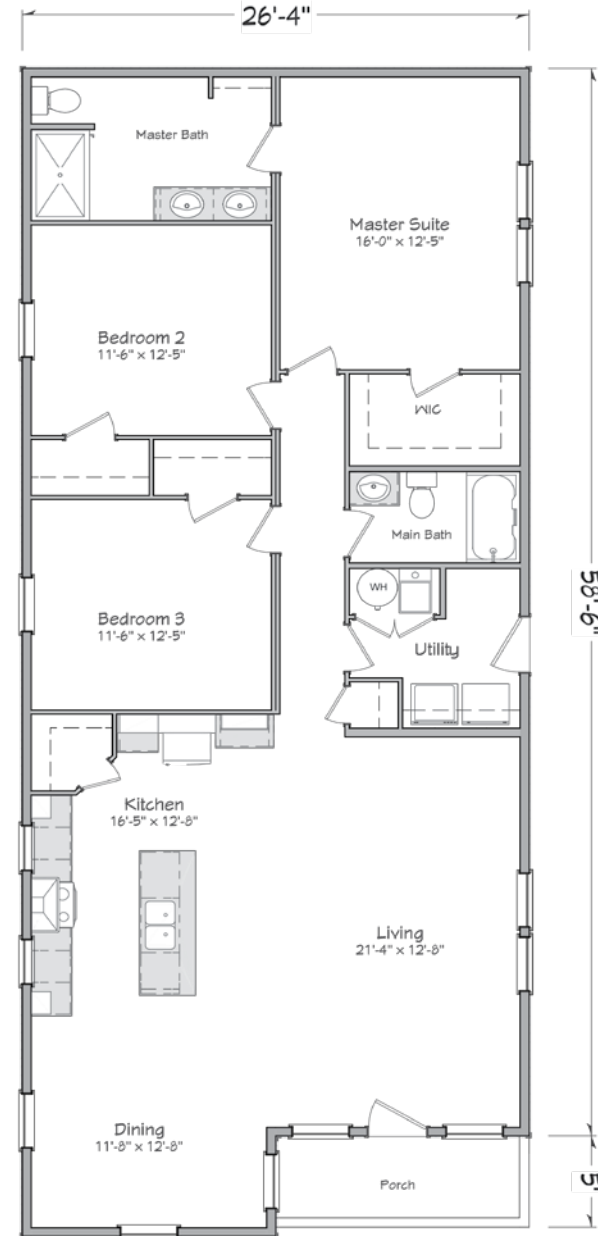
At Master-Craft we are constantly searching for new and better ways to build homes. We therefore reserve the right to change product specifications, plans & prices without notice and without incurring obligations.

Wythe Ranch

3 Bedroom
2 Bath



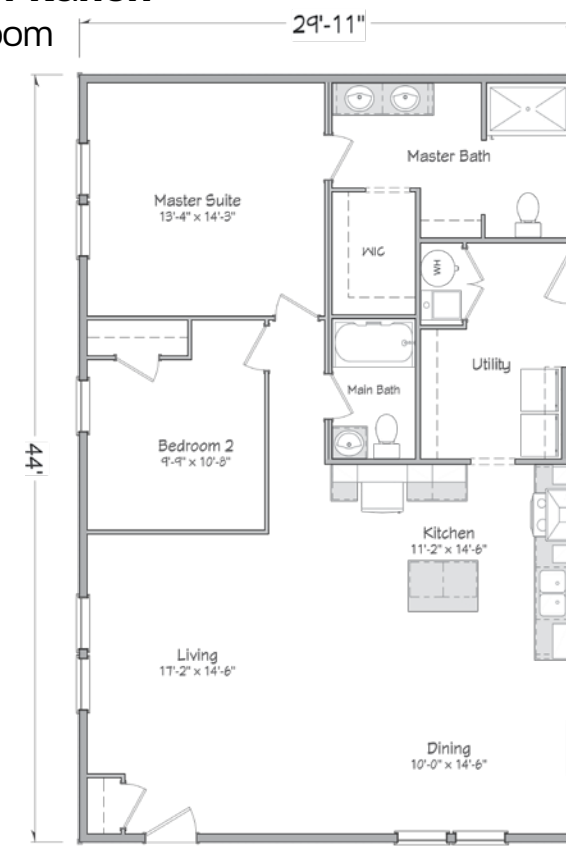
29'11" x 64'
1,915 Sq Ft



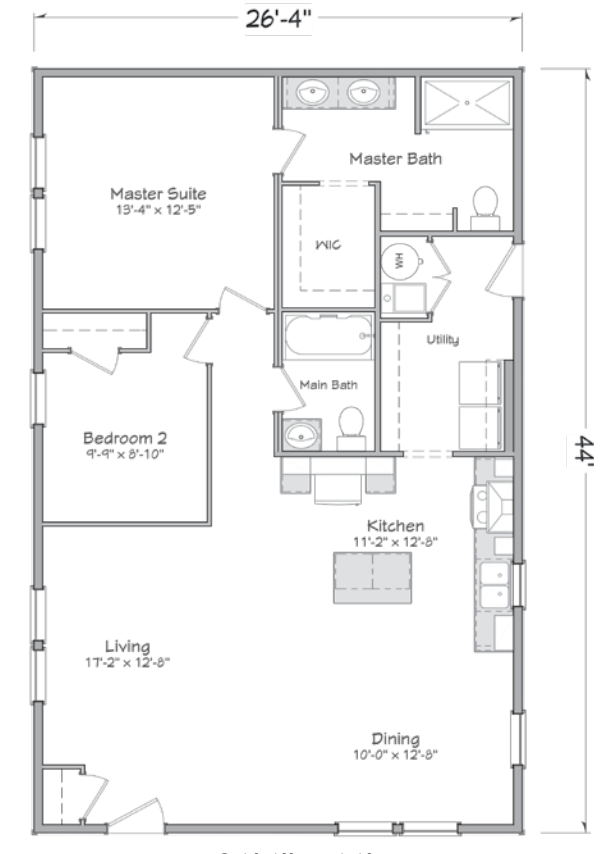
26'4" x 64'
1,685 Sq Ft

Clymer Ranch

2 Bedroom
2 Bath



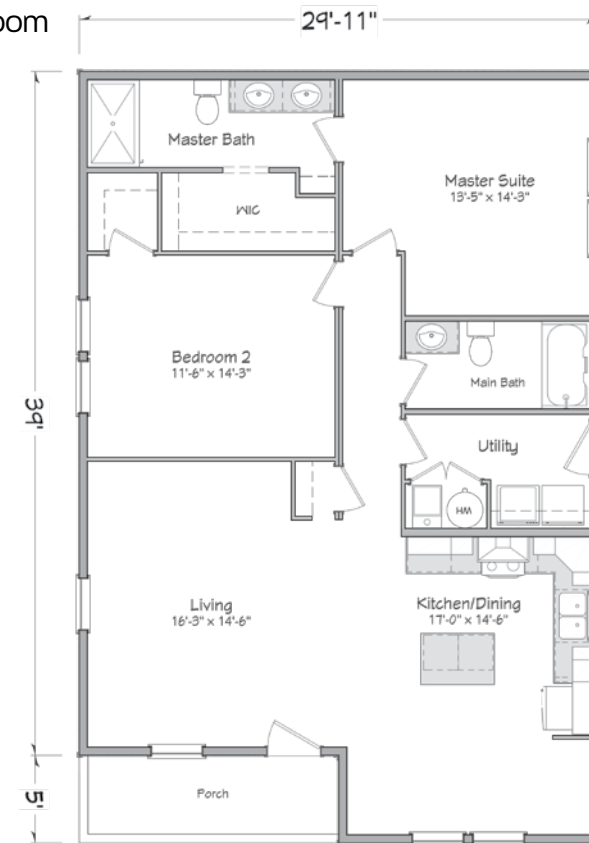
29'11" x 44'
1,316 Sq Ft



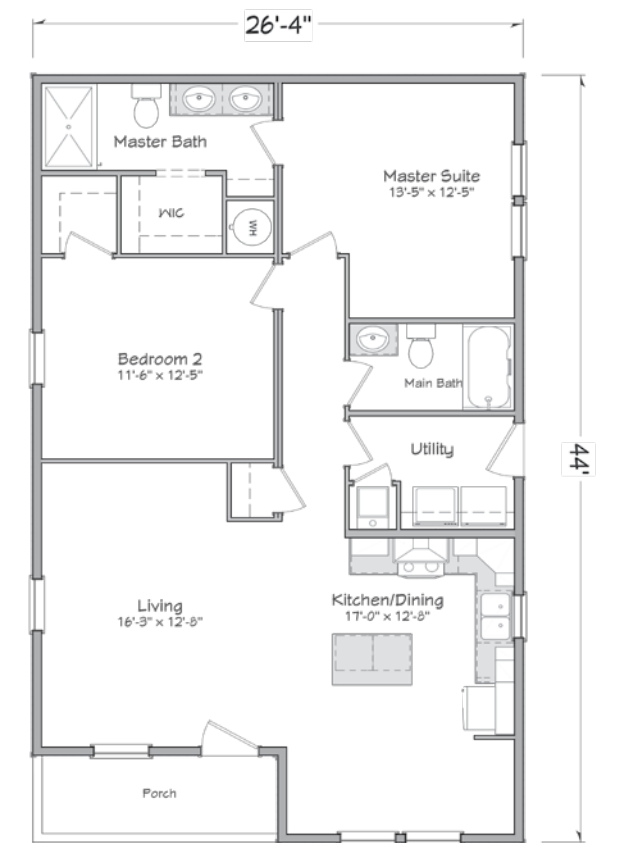
26'4" x 44'
1,159 Sq Ft

Hancock Ranch

2 Bedroom
2 Bath



29'11" x 44'
1,316 Sq Ft



26'4" x 44'
1,159 Sq Ft

Carroll Ranch

3 Bedroom
2 Bath



29' 11" x 52'
1,556 Sq Ft

26' 4" x 52'
1,369 Sq Ft

McKean Ranch

3 Bedroom
2 Bath



29' 11" x 64'
1,915 Sq Ft

26' 4" x 64'
1,685 Sq Ft

Jefferson Ranch

3 Bedroom
2 Bath

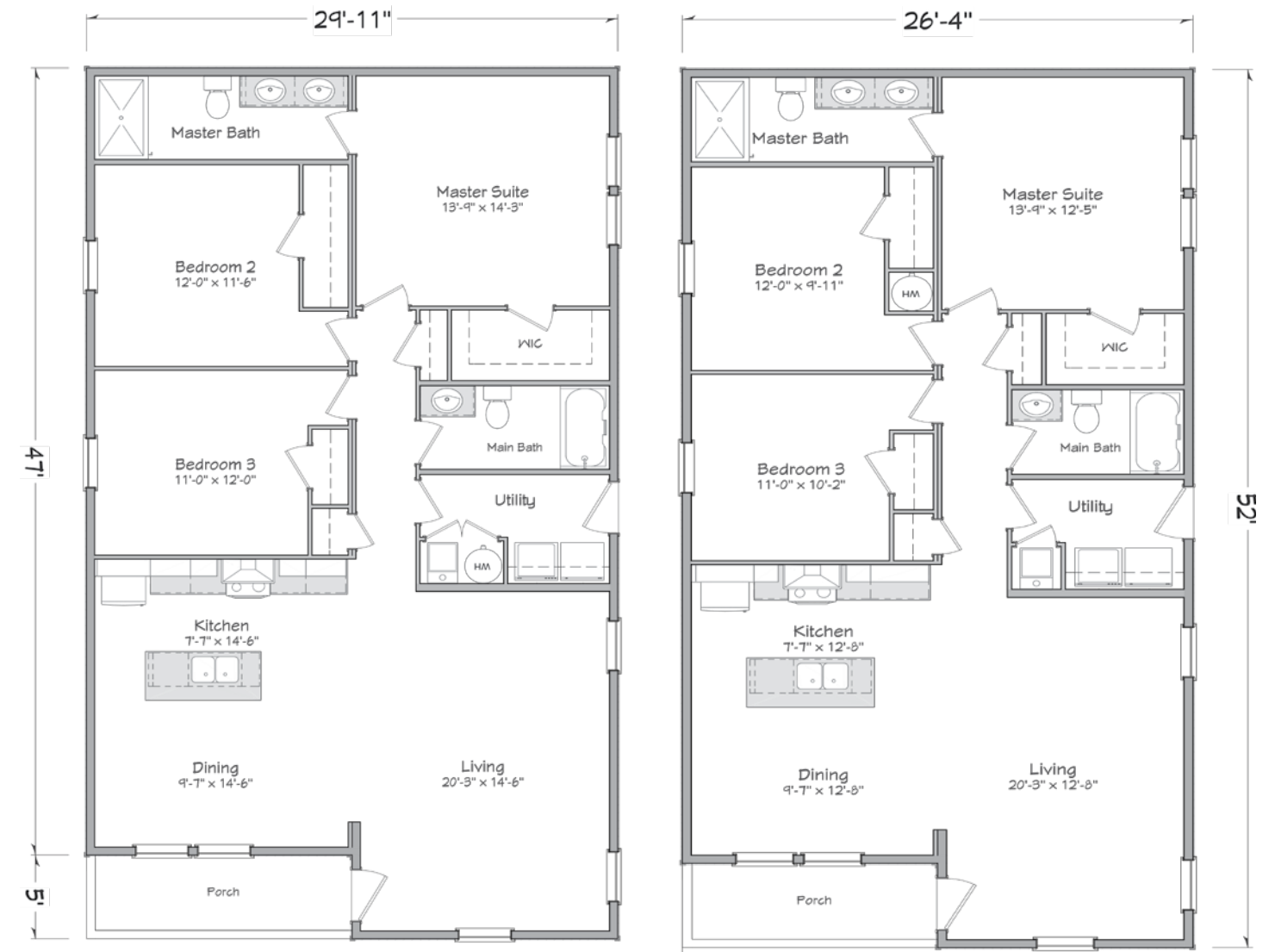


29'11" x 60'
1,795 Sq Ft

26'4" x 60'
1,580 Sq Ft

Sherman Ranch

3 Bedroom
2 Bath

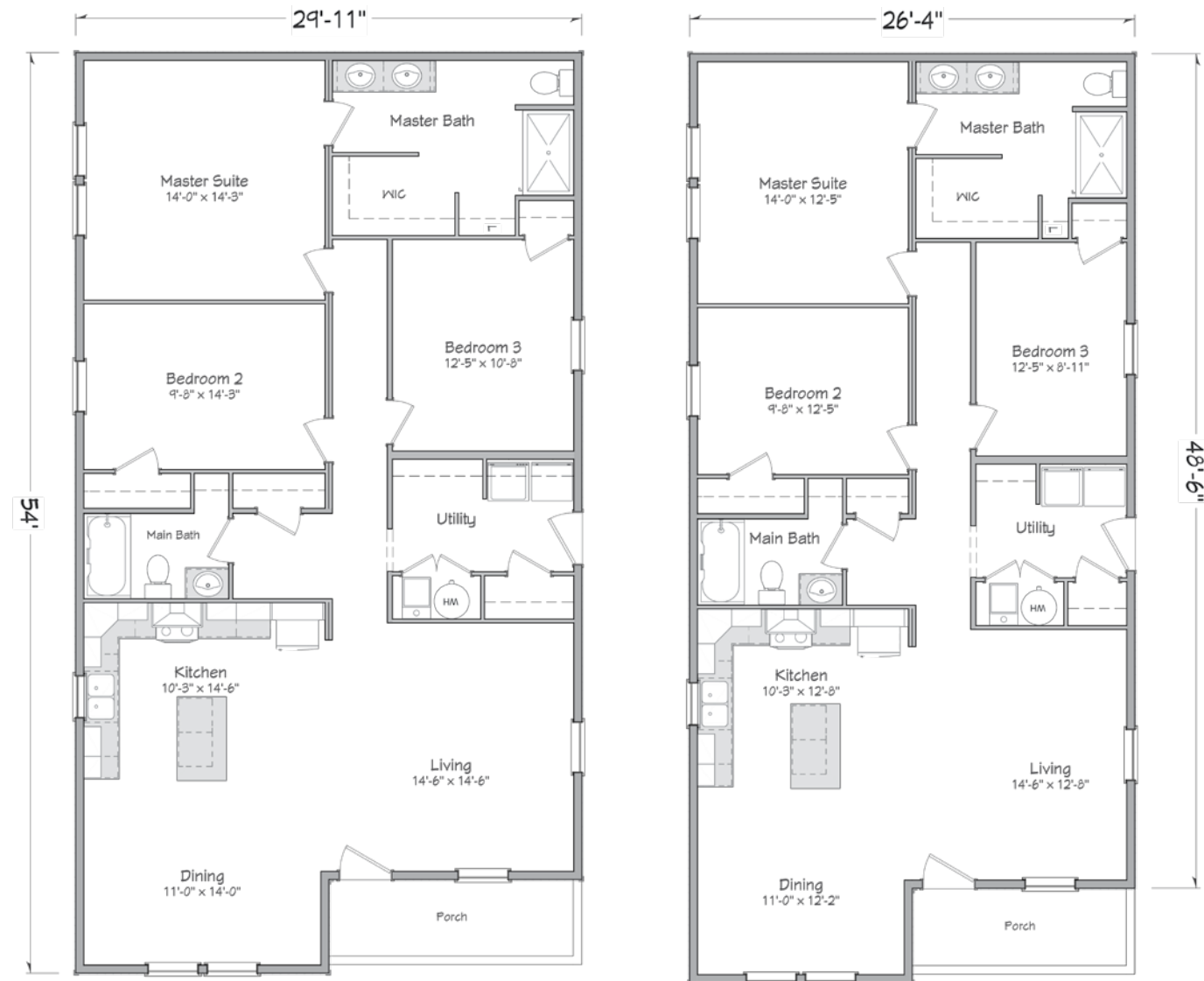


29'11" x 52'
1,556 Sq Ft

26'4" x 52'
1,369 Sq Ft

Huntington Ranch

3 Bedroom
2 Bath



29'11" x 54'
1,616 Sq Ft

26'4" x 54'
1,422 Sq Ft

Witherspoon Ranch

3 Bedroom
2 Bath

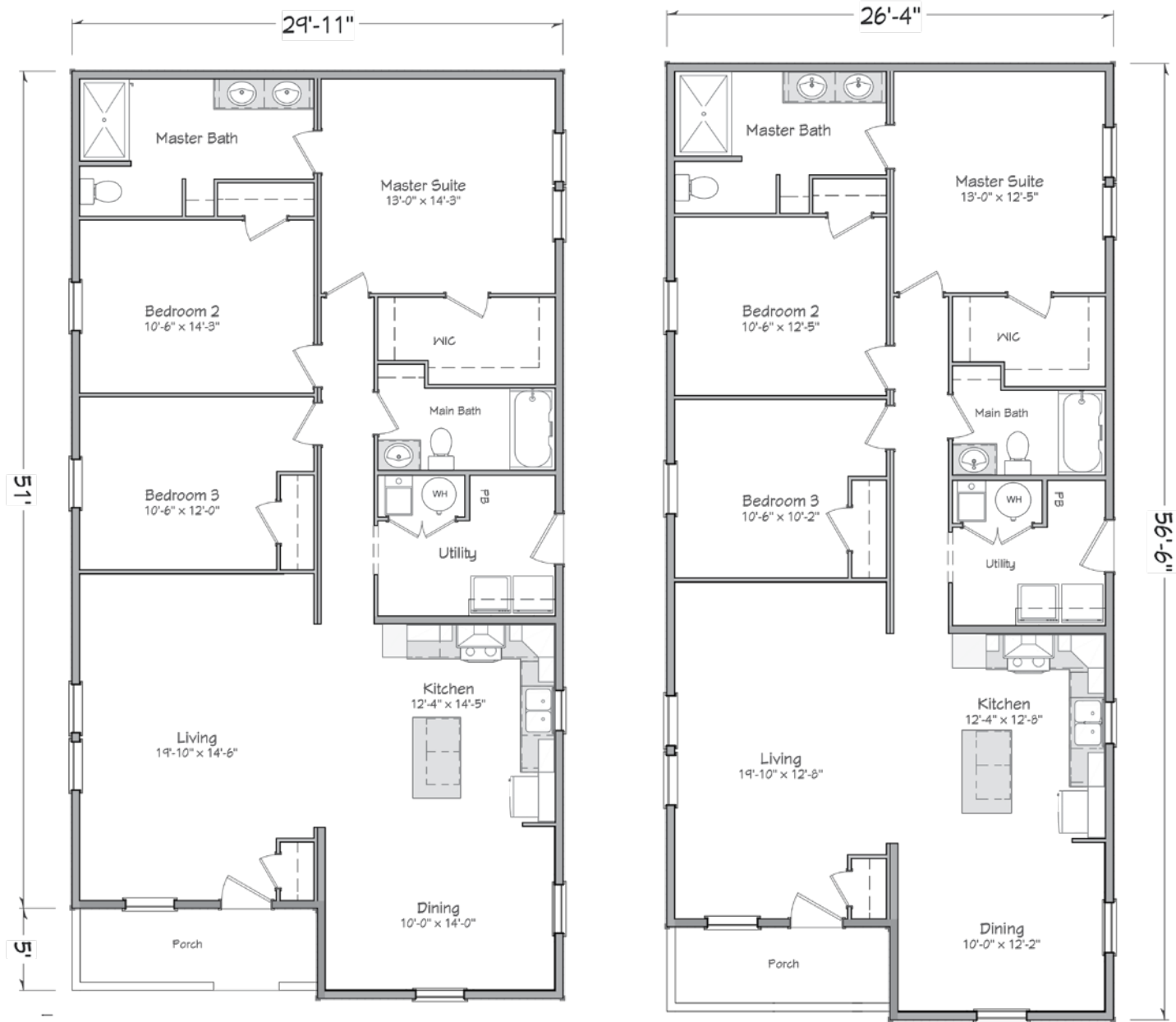


29'11" x 56'
1,629 Sq Ft

26'4" x 56'
1,475 Sq Ft

Harrison Ranch

3 Bedroom
2 Bath

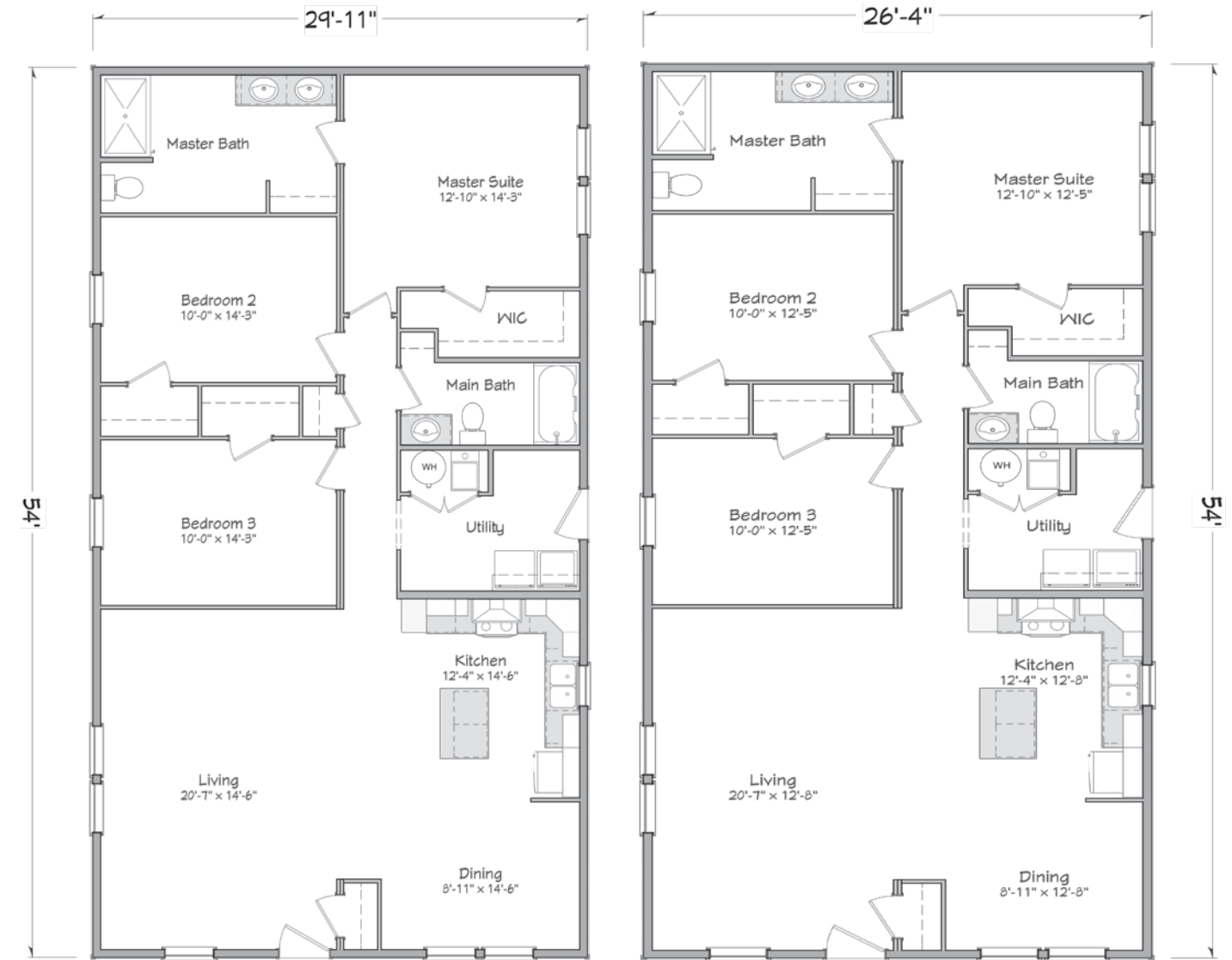


29'11" x 56'
1,675 Sq Ft

26'4" x 56'
1,475 Sq Ft

Wolcott Ranch

3 Bedroom
2 Bath

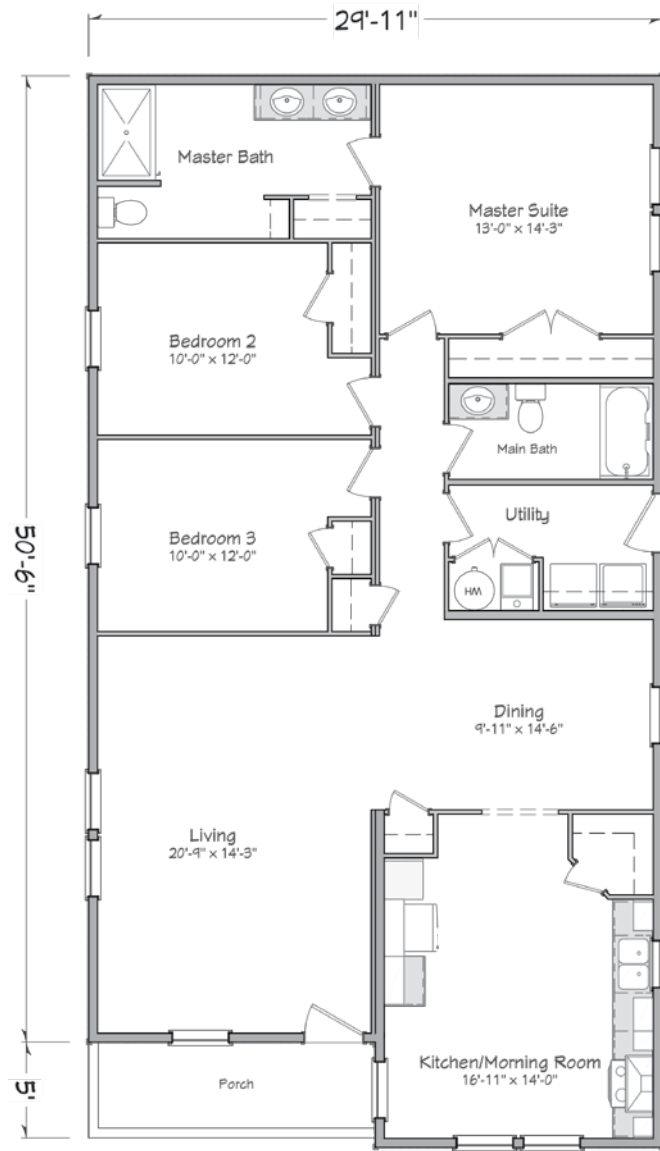


29'11" x 54'
1,616 Sq Ft

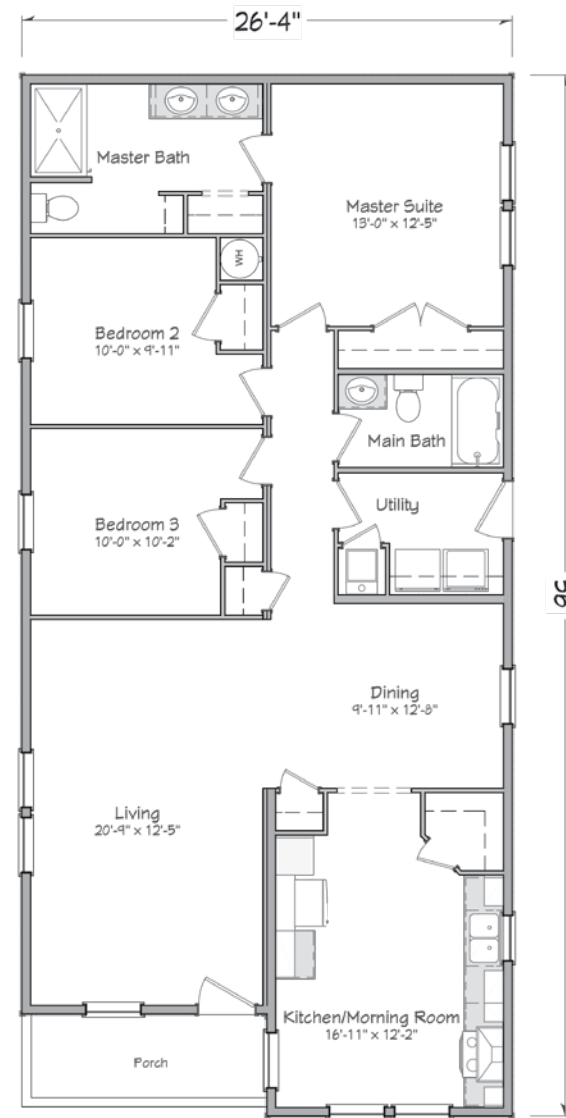
26'4" x 54'
1,422 Sq Ft

Braxton Ranch

3 Bedroom
2 Bath



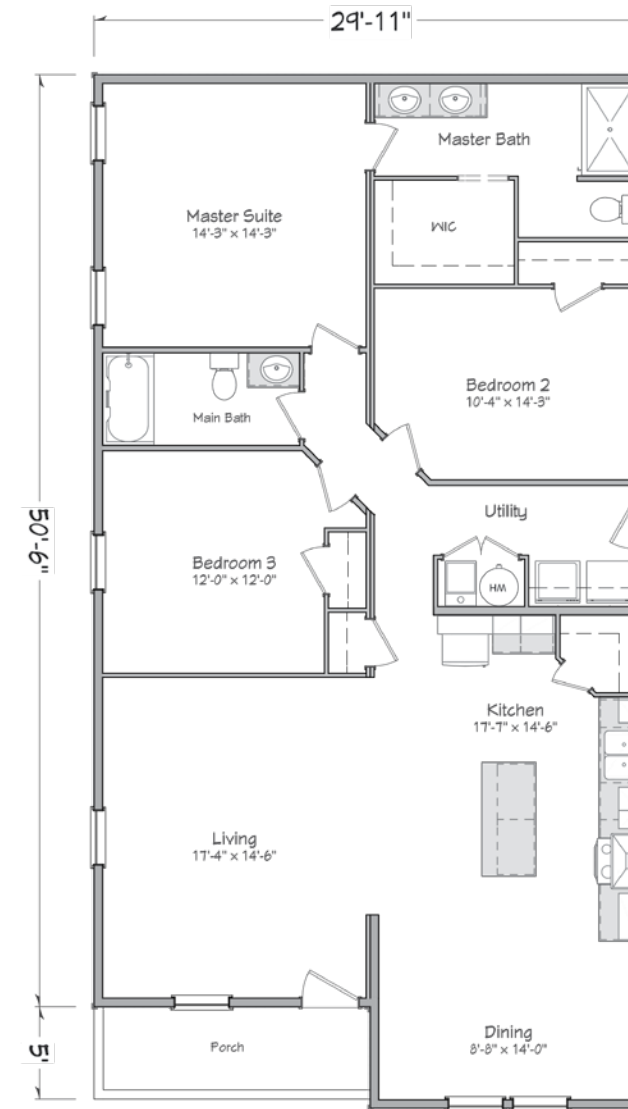
29'11" x 56'
1,675 Sq Ft



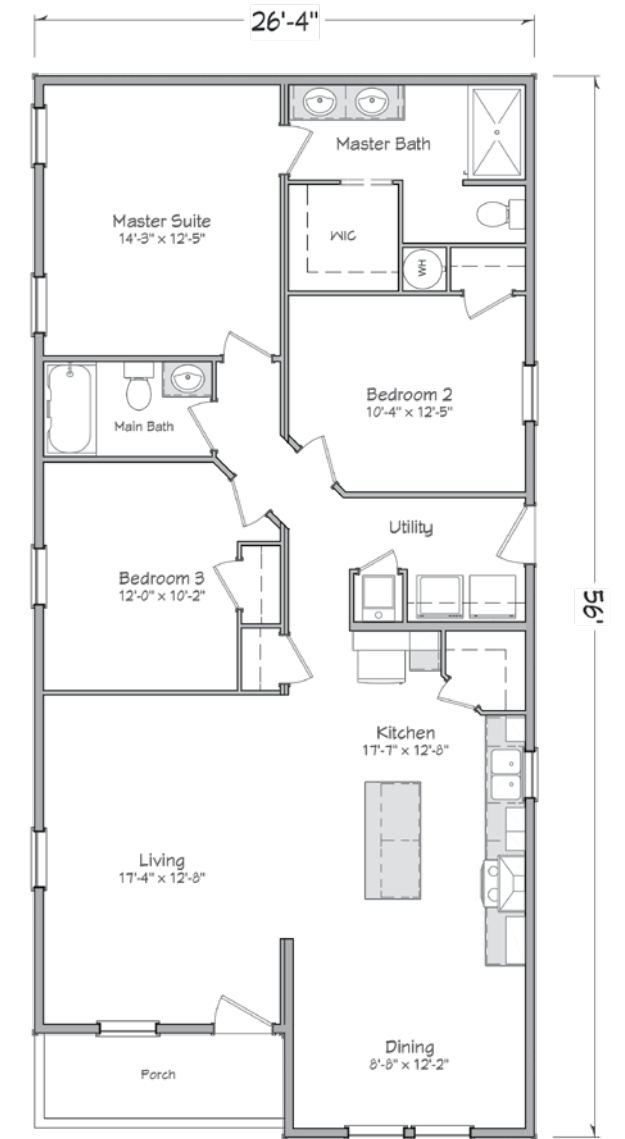
26'4" x 56'
1,475 Sq Ft

Gerry Ranch

3 Bedroom
2 Bath



29'11" x 56'
1,675 Sq Ft



26'4" x 56'
1,475 Sq Ft



**YOUR APPROVED
MASTER-CRAFT
HOMEBUILDER:**



Liberty Series 26-wide Floorplans

2020



Approved homebuilders are independent business entities and are not agents of Master-Craft Corporation or its subsidiaries.

Due to occasional updating of building codes and Master-Craft's continuous product improvement, specifications are subject to change without prior notification. Be sure to request a copy of current specifications from your selected homebuilder.

© 2020 Ritz-Craft Corporation 5-2020PA



Meet Master-Craft: the Newest Collection of Homes from Ritz-Craft Homes

Ritz-Craft is excited to introduce this all new collection of home designs which breathe new life into our company's heritage. Founded in 1954, Ritz-Craft has remained a family owned and operated company with a mission to provide quality and affordable housing solutions nationwide. Through a fanatical focus on the needs of our customers, Ritz-Craft has become known throughout the home building industry for providing unmatched value to both home builders and home buyers.

In today's economy, as the price for labor and material continue to rise, it can become difficult for many home builders to provide Americans with the quality home they deserve at a reasonable price. With a focus on "Home Building Made Easy," this new, Master-Craft collection will focus entirely on entry-level single and double section manufactured homes and simplified modular designs.

As a result, we are proud to note that the standard construction of Master-Craft collection products will provide numerous, value-added features in both single and double section manufactured homes, as well as new modular designs, including:

- Stainless Steel Appliances
- Wider, Arts & Crafts Casing and Base Molding
- Smooth Finished Drywall Ceilings
- European-Style Frameless Cabinets
- 16" O.C. Wall Construction with 2x6 Exterior Walls
- Many more amenity packages, options and selections
- These standards dramatically separate Master-Craft from the rest of the manufacturers competing in this market.

All Master-Craft collection plans will be backed by Ritz-Craft's award-winning tools and services, as well as our talented, in-house support departments. We're proud of this new, reimagined line of manufactured housing solutions and we are grateful for the opportunity to deliver you a Master-Craft home.

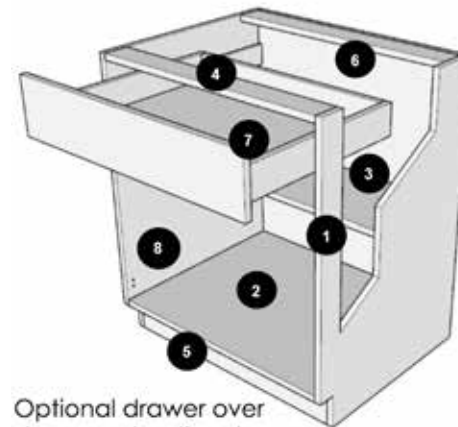


European Technology Meets American Craftsmanship

Legacy Crafted Cabinets, a member of the Ritz-Craft family of companies has created an entirely new line of cabinetry solutions for the Master-Craft collection of homes. The new Legato Cabinetry boasts an imaginative, frameless cabinet construction, as well as several value-added standards:

- Full-storage access
- Soft-close and self-close doors and drawers
- Adjustable base and overhead shelves with metal shelf clips
- Three standard colors, including white, gray, and a modern wood grain finish.

The look and functionality of cabinets helps create the heart of every home, and this new Legato Cabinetry by Legacy Crafted cabinets is proof that it is possible to promote affordability without sacrificing form or limiting function.



Optional drawer over door construction shown

Legato
CABINETS

Liberty Specifications Modular Series

EXTERIOR & CONSTRUCTION

- 30 lb. Roof Load
- 5/12 Nominal 24" OC
- Roof Sheathing 7/16" OSB w/ H-Clips
- Architectural Shingles
- Overhangs: 8" Front & Rear (Fixed), 8" on Gable Ends
- Exterior Walls: 2x6 at 16" O.C.
- Sidewall & Endwall Sheathing: 7/16 OSB
- Floor Joists: 2x10 at 16" O.C.
- Decking: 19/32" OSB
- White Drip Edge, Soffit, and Fascia
- Siding: 4/4 Shiplap
- Frost Proof Faucet: One Shiploose
- House Wrap: Standard
- Shutters: 15" on Front Door Side of Home
- Windows: Low E/Argon Gas Filled White Single Hung Vinyl Window
- Front Door- 3/0x6/8 FBGL Front Door w/ Peep and Wood Jambs
- Rear Door- 3/0x6/8 FBGL Door w/ Wood Jambs
- Exterior Locksets: Nickel
- Exterior Deadbolts: Nickel
- Exterior Light: Front/Rear Door, Patio Door - Per Plan

INSULATION

- Ceiling Insulation: R-30
- Exterior Walls: R-19

INTERIOR

- Interior Partitions: 24" O.C.
- Walls: 1/2" Drywall Smooth
- 8' Sidewall w/ Smooth Flat Ceiling
- Carpet Pad: 3/8" Rebond (5lb)
- Vinyl Floor Coverings in Wet Areas
- Carpet: 16oz
- Interior Doors: White 2—Panel Raised Square w/3 Mortised hinges
- 2/6 T/O (3/0 Per Plan)
- Furnace Door: White 2-Panel Door w/Grille
- Interior Molding: 2" Case
- Base Molding: 3-1/4"
- 3-5/8" Crown Molding T/O
- Wire Shelves: Closet, Pantry, Linen
- Wire Shelf Over Washer/Dryer Area
- Interior Locksets: Nickel
- Privacy Locks: Bath Doors
- Ceiling Light: LEDs in Hall, WIC, Utility, and Pantry
- Switched Recepts Bedrooms
- Hanging Light—Dining/Breakfast Areas

KITCHEN

- Wire & receptacle for Range: 220V
- 36" Stainless Steel Chimney Style Range Hood
- Dishwasher: Prep for Dishwasher
- Countertop: Laminate
- Backsplash: Matching Laminate
- Edging: Square Edge
- Kitchen: 6" Stainless Steel Double Bowl
- Cabinets: Legato Series Cabinets from Legacy Crafted Cabinets
 - 30" Wall Cabinets Standard with Crown
 - Soft/Self Close Adjustable Hinge Cabinet Doors/Drawers
 - Adjustable Shelves
 - Extra Deep Drawer Boxes w/ Opt Drawer over Door Available
- Kitchen Faucet—Single Lever Faucet -Chrome
- Standard Series Cabinet Pulls

BATHS

- Bath Vanity Faucet: Center-set Lav Faucets—Chrome
- Furniture Style Vanity—Master Bath
- Shower Faucet: Chrome
- Tub/Shower Faucet: Chrome
- Pencil Edge Mirrors
- Lav Bowls: Porcelain w/ Pop Up Drain Assembly
- Fiberglass tubs & showers per plan
- Elongated Porcelain Water Closets
- Vanity Lights: 2 Bulb (Nickel)
- Bath Vent Fans: Fan w/Light

UTILITIES

- Exterior GFCI Receptacle – 2 Standard
- Washer Hookup Wire & Plumb Washer/Dryer
- Wire for Dryer- 220v- w/ Standard Utility
- Exterior Dryer Vent Kit
- "Toggle" Switched T/O
- Thermostat
- 200 AMP Panel Box: Installed /White Metal Door
- Individual Shut Off Valves at Sinks & Toilets
- Central Water Shut Offs for Tubs and Showers
- HVAC—Boots and Floor Registers

MISCELLANEOUS

- Shingle over ridge vent

At Master-Craft we are constantly searching for new and better ways to build homes. We therefore reserve the right to change product specifications, plans & prices without notice and without incurring obligations.

Liberty DW Specifications

EXTERIOR & CONSTRUCTION

- 30 lb. Roof Load
- 3/12 (Nominal) Roof at 24" O.C.
- Roof Sheathing 7/16" OSB w/ H-Clips
- Architectural Shingles
- Overhangs: 8" Front & Rear (Fixed), 8" on Gable Ends
- Exterior Walls: 2x6 at 16" O.C.
- Sidewall & Endwall Sheathing: 7/16 OSB
- Floor Joists: 2x6 at 16" O.C.
- Decking: 19/32" OSB
- Porch Floor Decking: 5/4 x 6 Treated Lumber Decking - Per Plan
- Porch Railing: White Vinyl Porch Post & Rail System - Per Plan
- White Drip Edge, Soffit, and Fascia
- Siding: 4/4 Shiplap
- Frost Proof Faucet: One
- Shutters: 15" on Front Door side of Home
- Windows: Low E/Argon Gas Filled White Single Hung Vinyl Window
- Front Door- 3/0x6/8 FBGL Front Door w/ Peep and Wood Jambs
- Rear Door- 3/0x6/8 FBGL Door w/Wood Jambs
- Exterior Locksets: Nickel
- Exterior Deadbolts: Nickel
- Exterior Light: Front/Rear Door, Patio Door—Per Plan
- Recessed Spot w/Diffuser in Porch Ceiling

INSULATION

- Ceiling Insulation: R-30
- Exterior Walls: R-19
- Floor Insulation: R-22

INTERIOR

- Interior Partitions: 16" O.C.
- Walls: 3/8" VOG (1/2 Smooth Drywall Optional in High Impact Areas or T/O)
- 8' Sidewall w/ Smooth/Flat
- Carpet Pad: 3/8" Rebond (5lb)
- Vinyl Floor Coverings in Wet Areas
- Carpet: 16oz
- Interior Doors: White 2—Panel Raised Square w/3 Mortised Hinges
- 2/6 T/O (3/0 Per Plan)
- Furnace Door: White 2-Panel Door w/Grille
- Interior Molding: 2" Case
- Interior Molding: 3-1/4" Base
- Crown Molding T/O
- 3-5/8" Crown Molding T/O
- Drapes/Mini Blinds Throughout
- Wire Shelves: Linens, Pantry, Closets
- Wire Shelf Over Washer/Dryer Area
- Interior Locksets: Nickel
- Privacy Locks: Bath Doors
- Ceiling Light: LEDs in Hallway, Utility, WIC, Pantry per Plan
- Switched Receptacle Bedrooms
- Hanging Light—Dining/Breakfast Areas

KITCHEN

- Wire & receptacle for Range: 110V
- Appliance Package—Stainless Steel
 - 36" Stainless Steel Chimney Style Range Hood
 - Gas Range
 - 18 Cubic Ft Refrigerator
 - Dishwasher Optional (Cabinet Standard)
- Countertop: Laminate
- Backsplash: Matching Laminate
- Edging: Square Edge- Matching Laminate
- Kitchen: 6" Stainless Steel Double Bowl
- Cabinets: Legato Series Cabinets from Legacy Crafted Cabinets
 - 30" Wall Cabinets Standard with Crown
 - Soft/Self Close Adjustable Hinge Cabinet Doors/Drawers
 - Adjustable Shelves
 - Extra Deep Drawer Boxes w/ Drawer over Door Option Available
- Kitchen Faucet—Single Lever Kitchen Faucet-Chrome
- Standard Series Cabinet Pulls

BATHS

- Bath Vanity Faucet: Center-set Lav Faucets-Chrome
- Furniture Style Vanity - Master Bath
- Shower Faucet: Chrome
- Tub/Shower Faucet: Chrome
- Pencil Edge Mirrors
- Lav Bowls: Porcelain w/ Pop Up Drain Assembly
- 1-Piece Fiberglass Tub/Shower Per Plan
- 1 Piece Fiberglass Shower Per Plan
- Elongated Porcelain Water Closet
- Vanity Lights: 2 Bulb (Nickel)
- Bath Vent Fan: Fan w/Light

UTILITIES

- Exterior GFCI Receptacle – 1 Standard
- Washer Hookup Wire & Plumb Washer/Dryer
- Wire for Dryer- 220AMP
- Exterior Dryer Vent Kit
- "Toggle" Switched T/O
- Thermostat
- 100 AMP Panel Box: Installed /White Metal Door
- Water Heater: 30 Gallon Electric- Installed
- Installed Drain Pan w/PVC Drain Under Water Heater
- Individual Shut Off Valves
- Central Water Shut Offs at Sinks and Toilets
- Furnace: Gas
- Insulated Heat Duct w/ Perimeter Floor Registers
- Ventilare III System

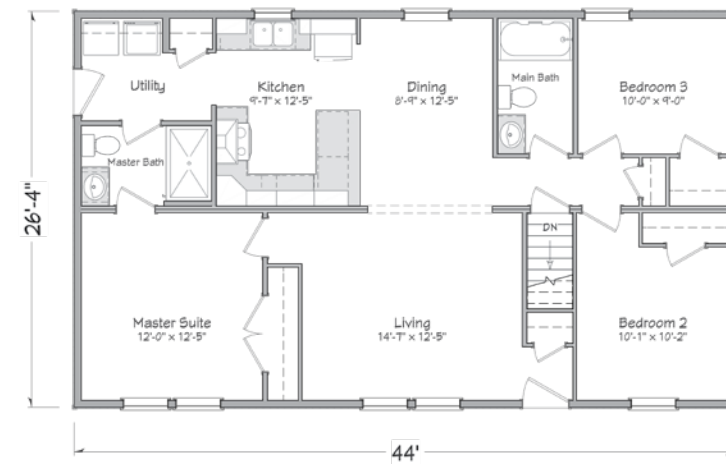
MISCELLANEOUS

- Shingle over ridge vent

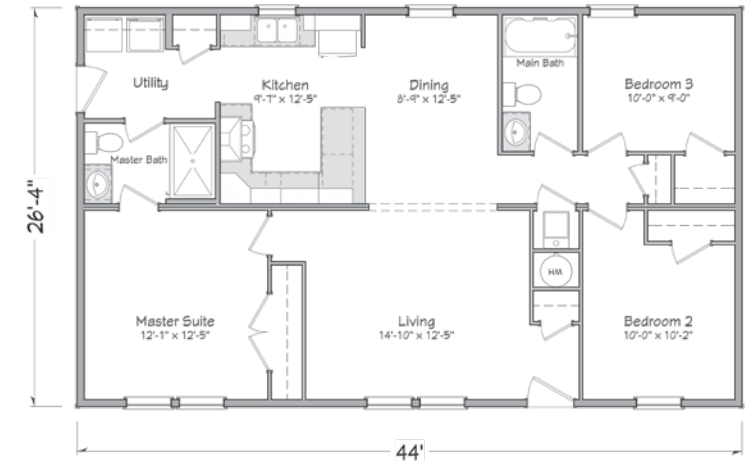
At Master-Craft we are constantly searching for new and better ways to build homes. We therefore reserve the right to change product specifications, plans & prices without notice and without incurring obligations.

Dickenson

26'4" x 44'
1,158 Sq. Ft.
3 bedroom • 2 bath



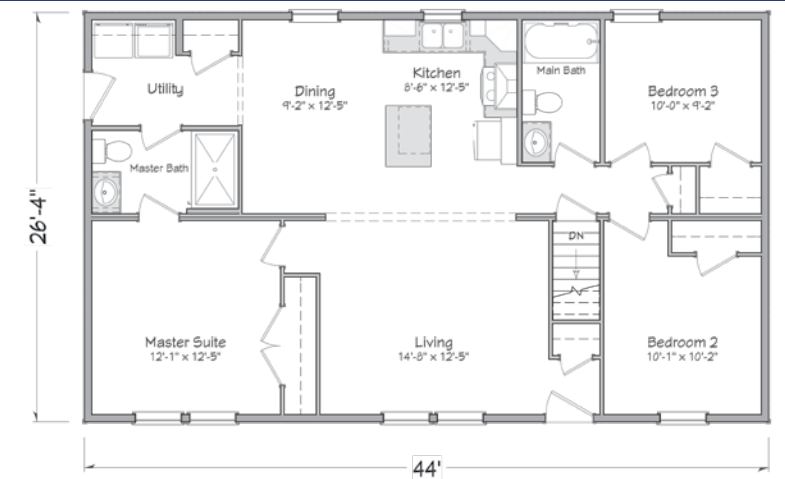
Basement Plan



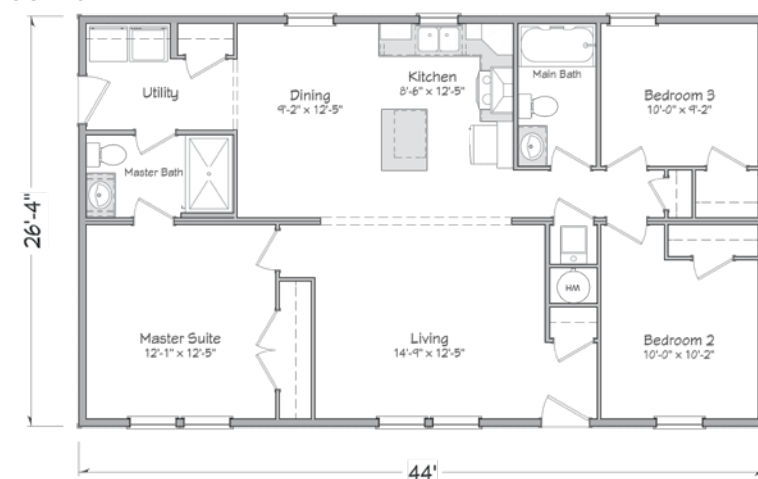
Crawl Space Plan

Baldwin

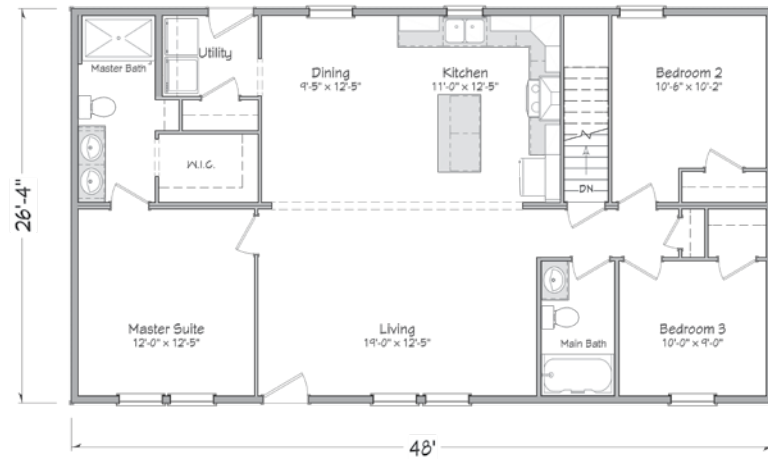
26'4" x 44'
1,158 Sq. Ft.
3 bedroom • 2 bath



Crawl Space Plan



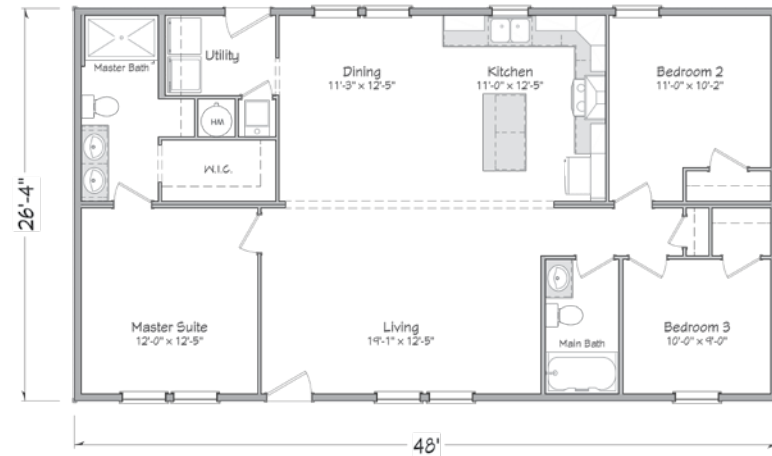
Basement Plan



Gorham

26'4" x 48'
1,264 Sq. Ft.
3 bedroom • 2 bath

Basement Plan

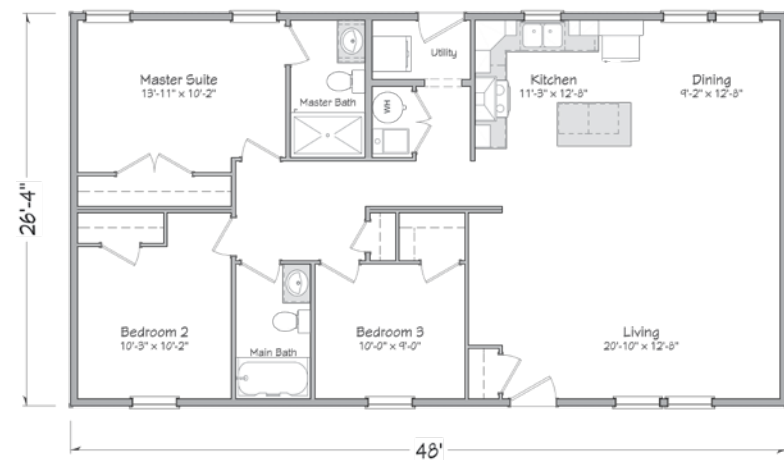


Crawl Space Plan

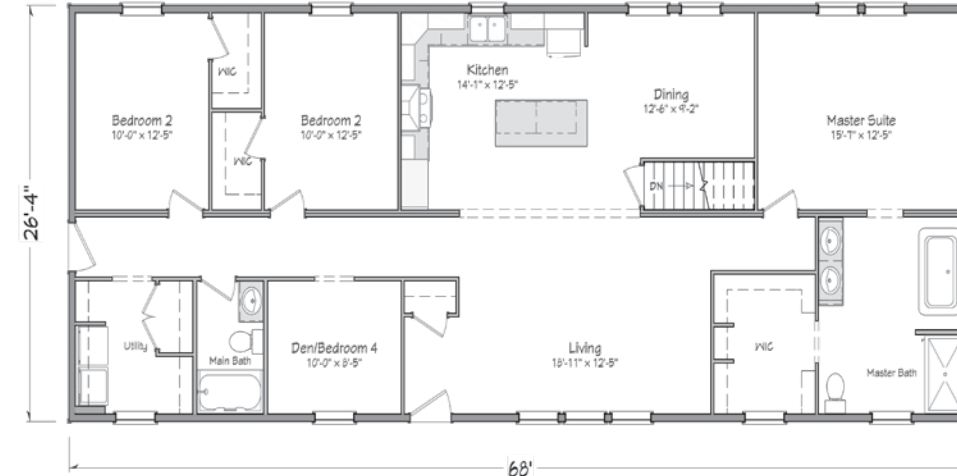
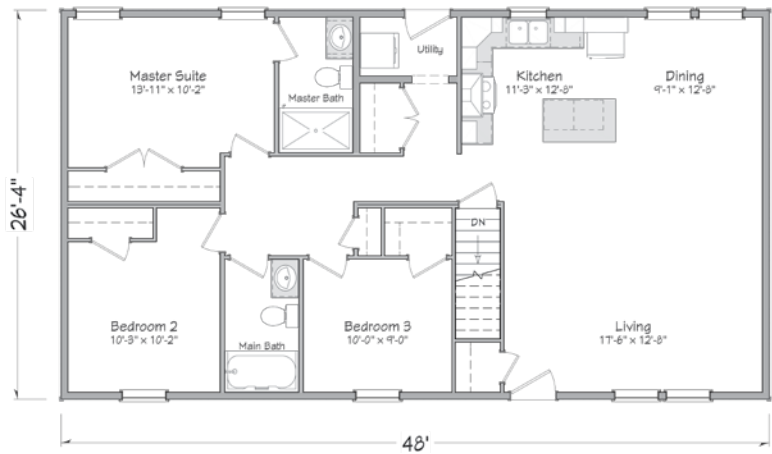
Livingston

26'4" x 48'
1,264 Sq. Ft.
3 bedroom • 2 bath

Crawl Space Plan



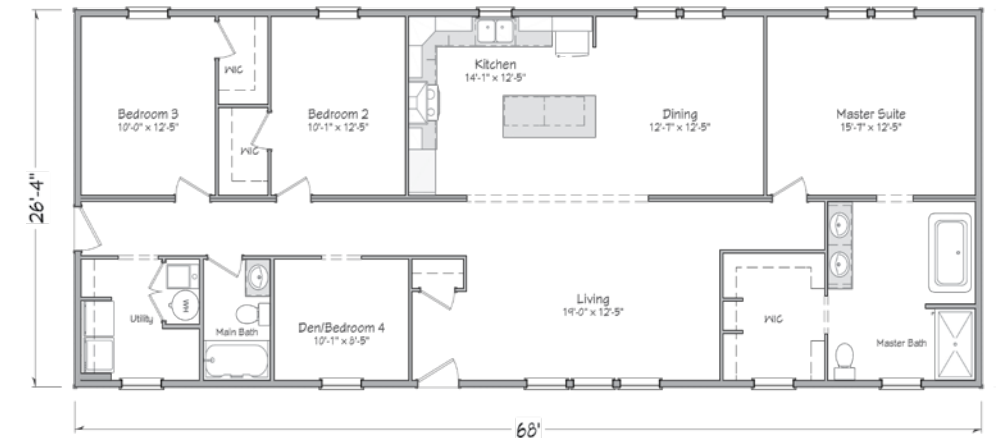
Basement Plan



McHenry

26'4" x 68'
1,790 Sq. Ft.
4 bedroom • 2 bath

Basement Plan

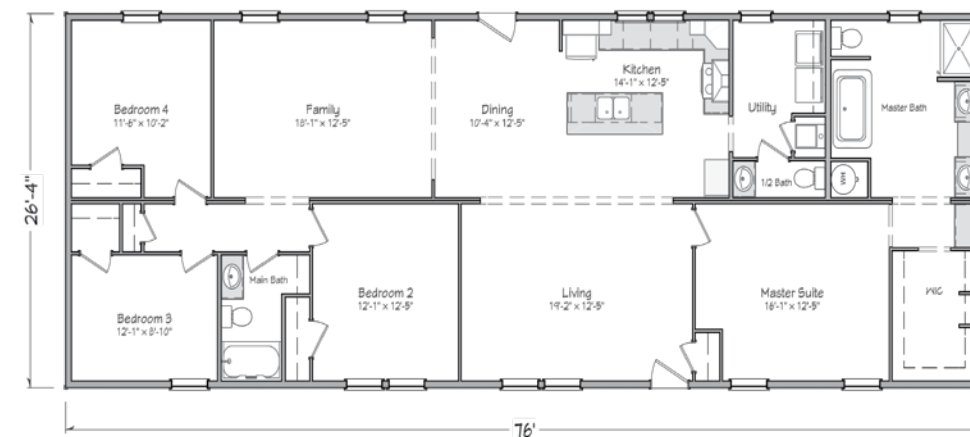


Crawl Space Plan

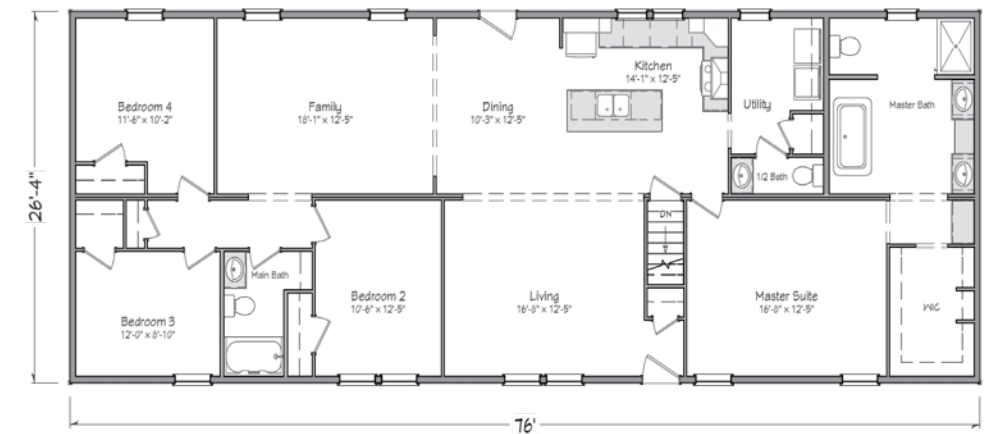
Ingersoll

26'4" x 76'
2,001 Sq. Ft.
4 bedroom • 2.5 bath

Crawl Space Plan

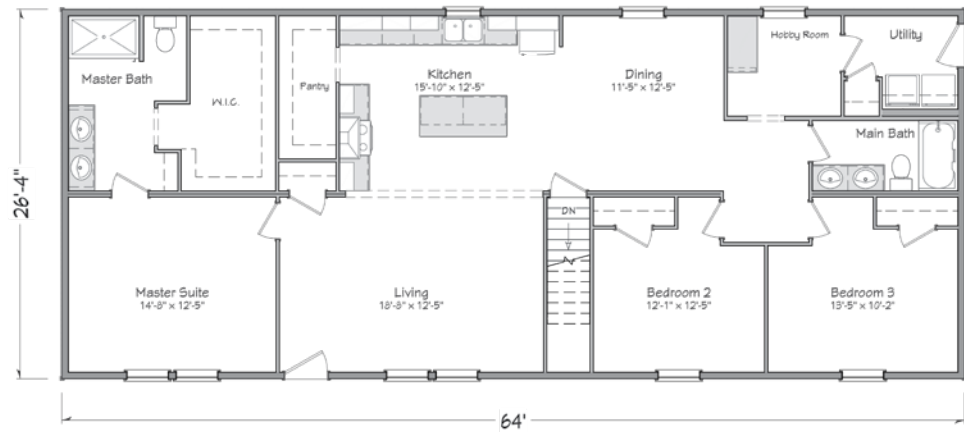


Basement Plan

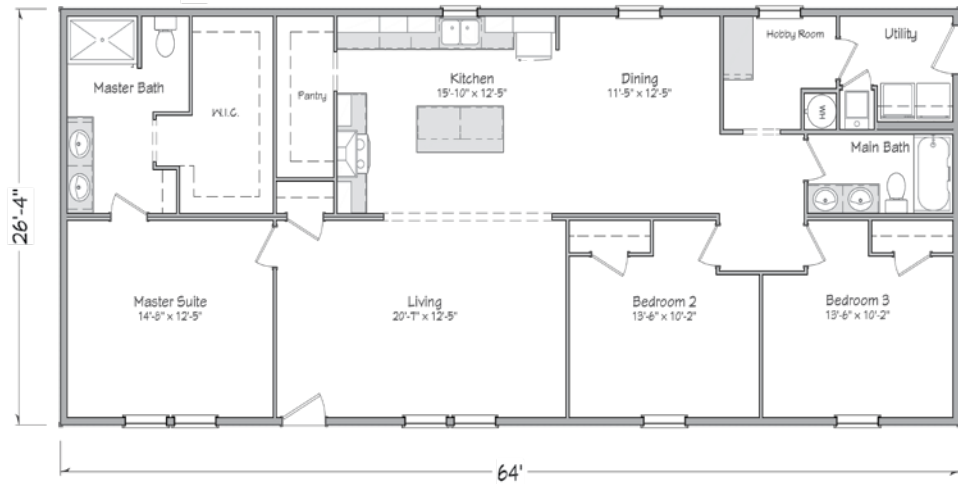


Washington

26'4" x 64'
1,685 Sq. Ft.
3 bedroom • 2 bath



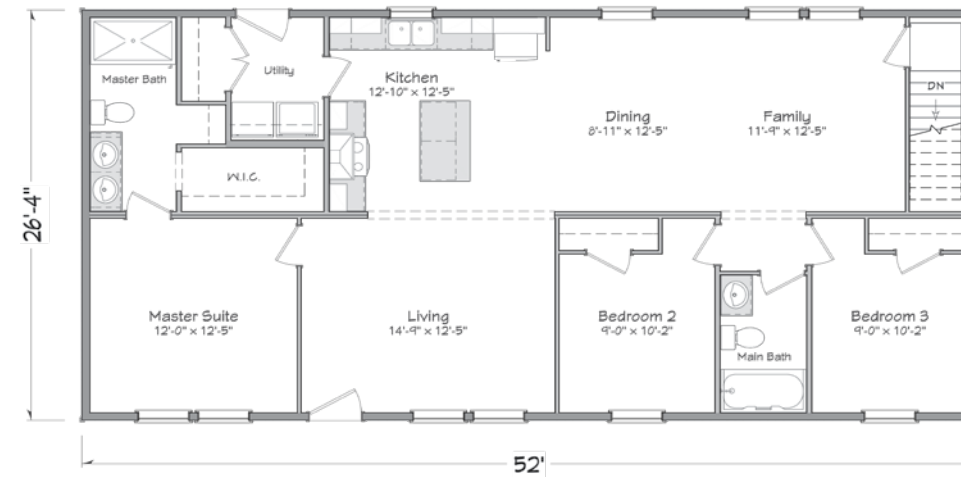
Basement Plan



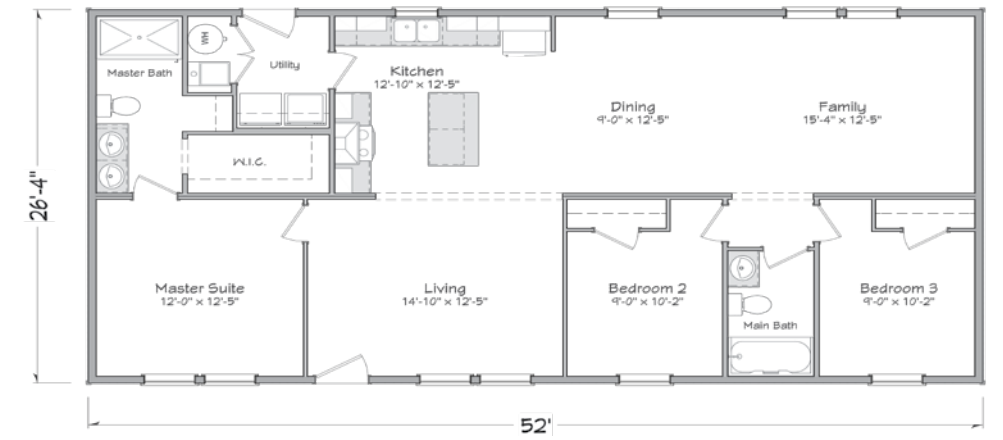
Crawl Space Plan

Brearley

26'4" x 52'
1,369 Sq. Ft.
3 bedroom • 2 bath



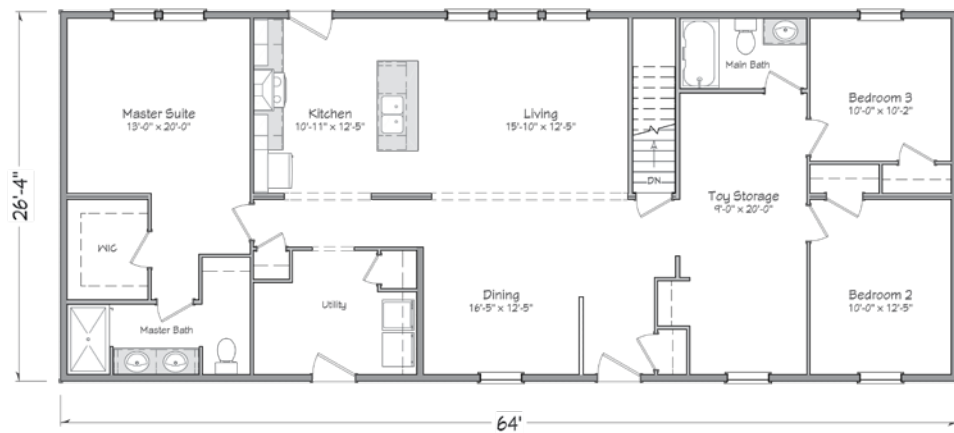
Basement Plan



Crawl Space Plan

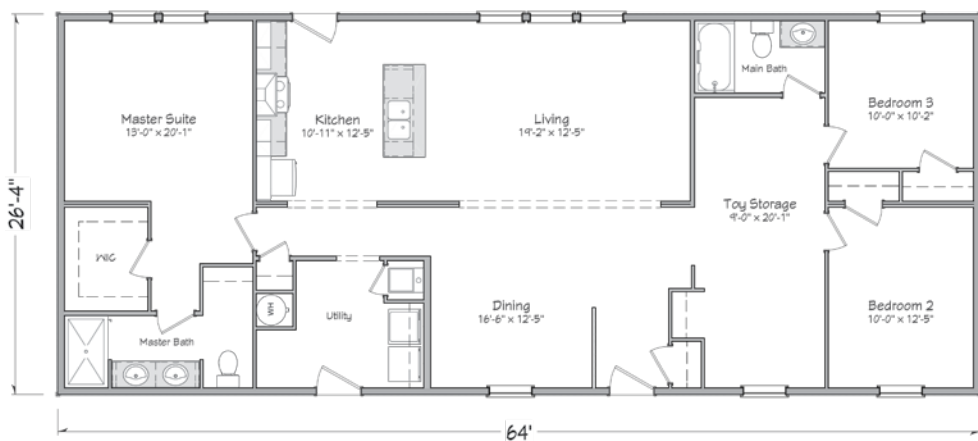
Rutledge

26'4" x 64'
1,685 Sq. Ft.
3 bedroom • 2 bath



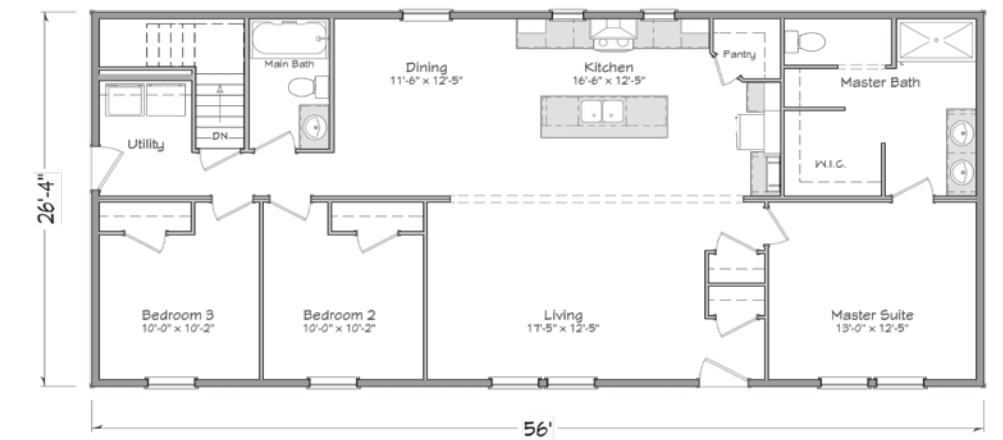
Basement Plan

Crawl Space Plan



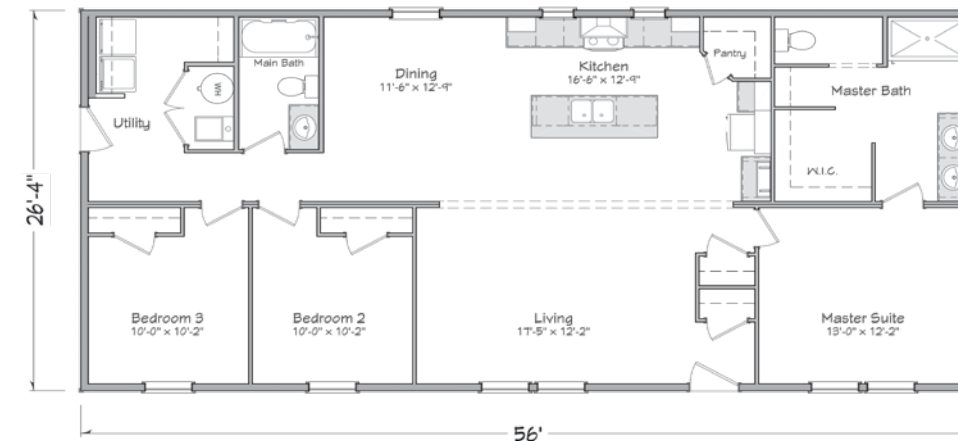
Langdon

26'4" x 56'
1,475 Sq. Ft.
3 bedroom • 2 bath



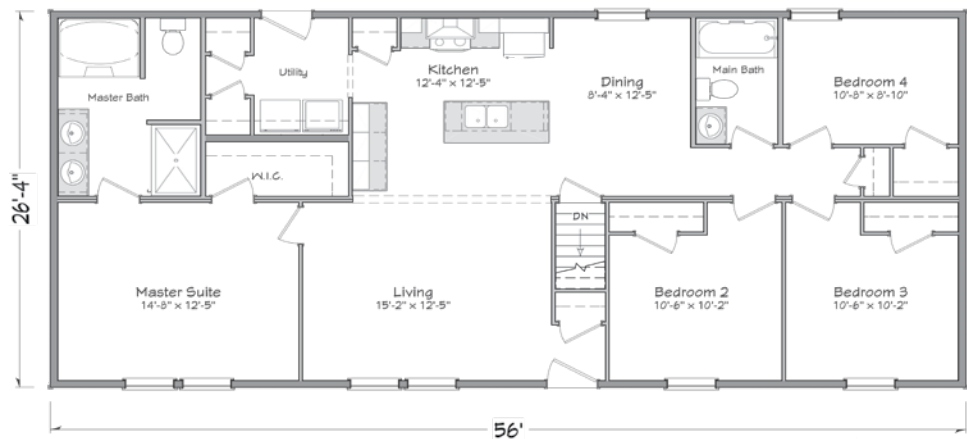
Basement Plan

Crawl Space Plan

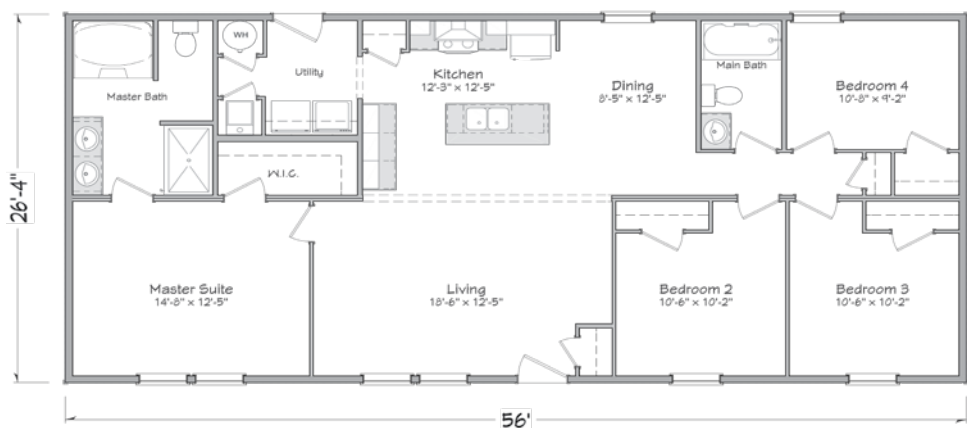


Mifflin

26'4" x 56'
1,475 Sq. Ft.
4 bedroom • 2 bath



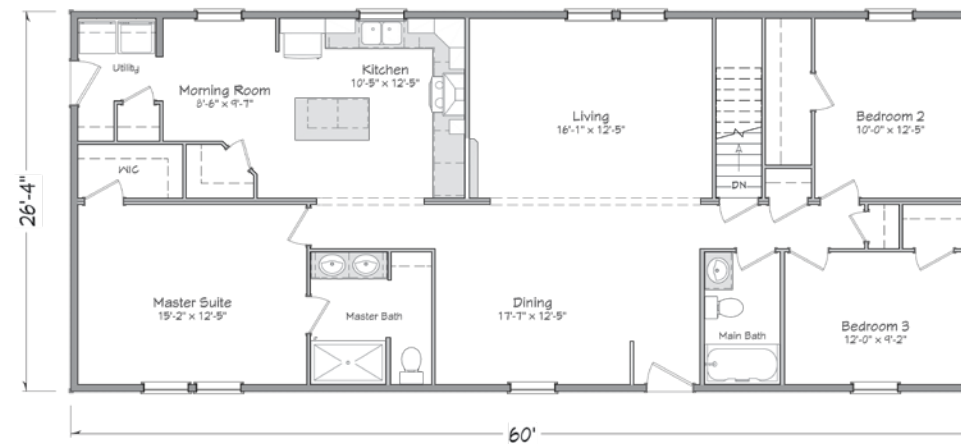
Basement Plan



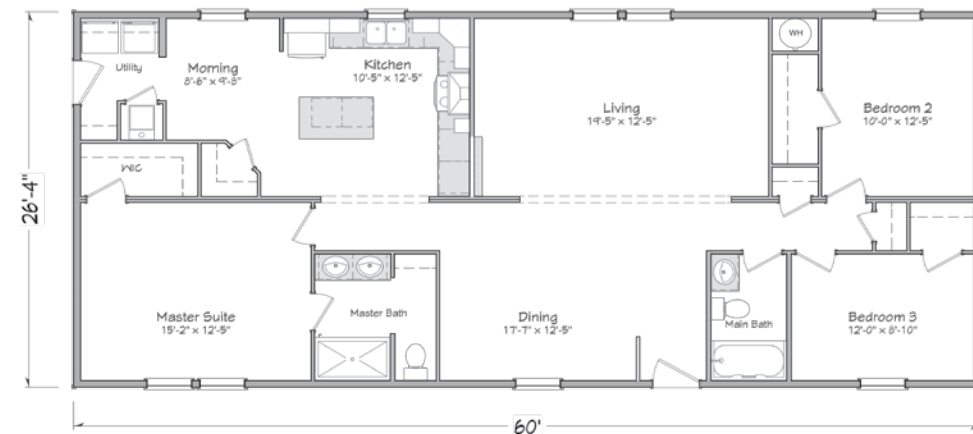
Crawl Space Plan

Franklin

26'4" x 60'
1,580 Sq. Ft.
3 bedroom • 2 bath



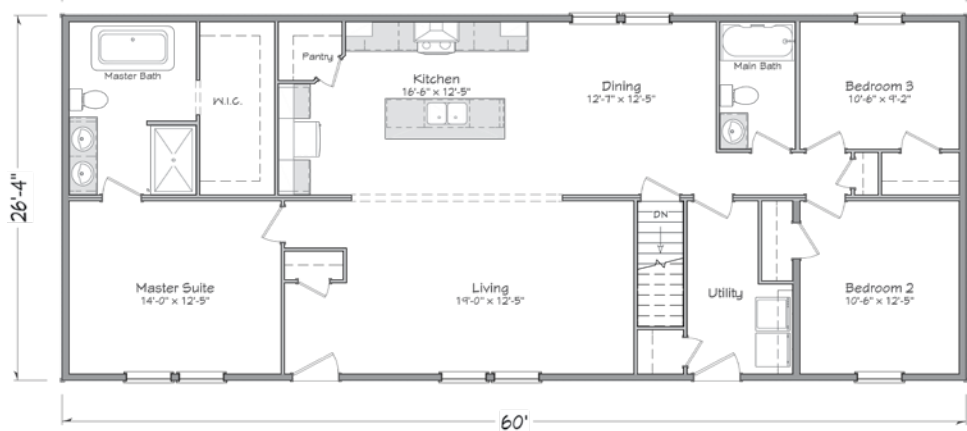
Basement Plan



Crawl Space Plan

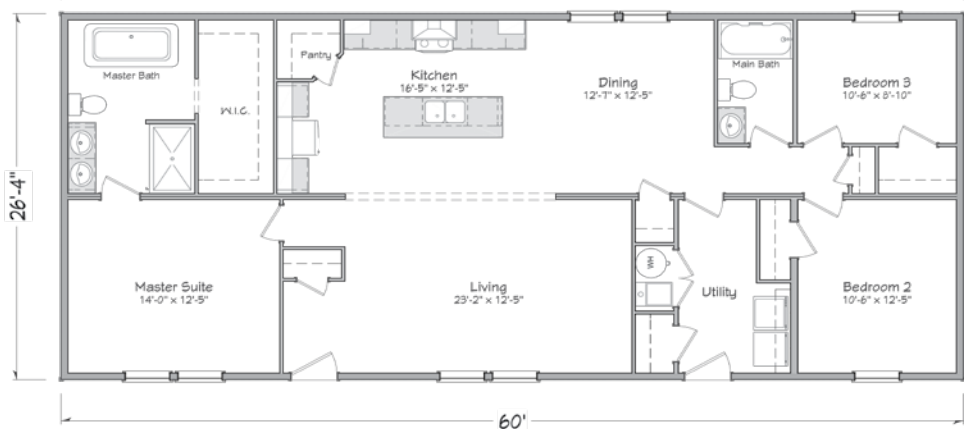
Morris

26'4" x 60'
1,580 Sq. Ft.
3 bedroom • 2 bath



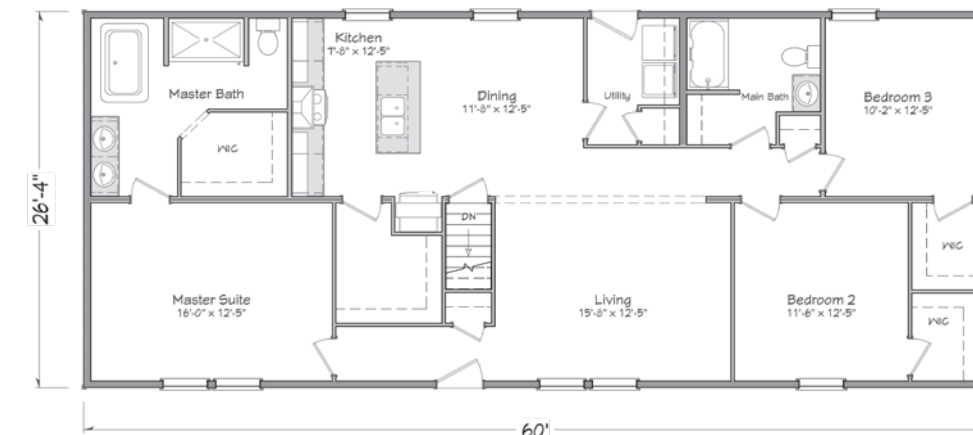
Basement Plan

Crawl Space Plan



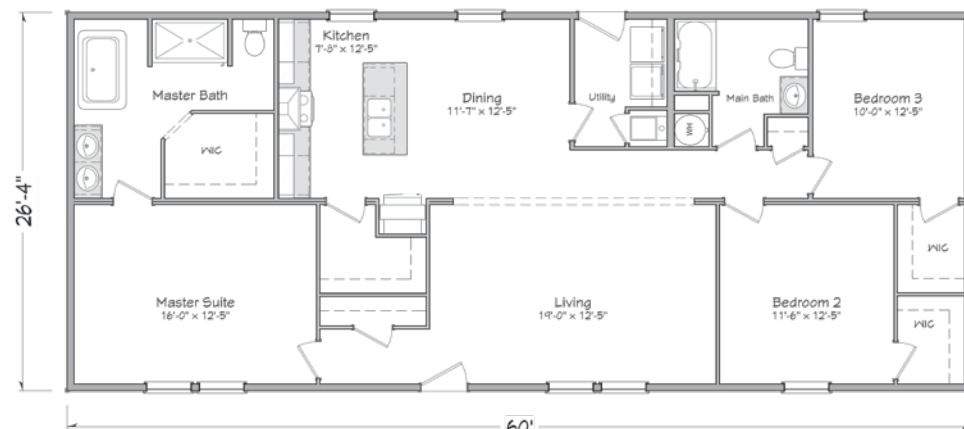
Madison

26'4" x 60'
1,580 Sq. Ft.
3 bedroom • 2 bath



Basement Plan

Crawl Space Plan





Liberty Series
30-wide
Floorplans
2020

**YOUR APPROVED
MASTER-CRAFT
HOMEBUILDER:**



Approved homebuilders are independent business entities and are not agents of Master-Craft Corporation or its subsidiaries.

Due to occasional updating of building codes and Master-Craft's continuous product improvement, specifications are subject to change without prior notification. Be sure to request a copy of current specifications from your selected homebuilder.

© 2020 Ritz-Craft Corporation 5-2020PA



Meet Master-Craft: the Newest Collection of Homes from Ritz-Craft Homes

Ritz-Craft is excited to introduce this all new collection of home designs which breathe new life into our company's heritage. Founded in 1954, Ritz-Craft has remained a family owned and operated company with a mission to provide quality and affordable housing solutions nationwide. Through a fanatical focus on the needs of our customers, Ritz-Craft has become known throughout the home building industry for providing unmatched value to both home builders and home buyers.

In today's economy, as the price for labor and material continue to rise, it can become difficult for many home builders to provide Americans with the quality home they deserve at a reasonable price. With a focus on "Home Building Made Easy," this new, Master-Craft collection will focus entirely on entry-level single and double section manufactured homes and simplified modular designs.

As a result, we are proud to note that the standard construction of Master-Craft collection products will provide numerous, value-added features in both single and double section manufactured homes, as well as new modular designs, including:

- Stainless Steel Appliances
- Wider, Arts & Crafts Casing and Base Molding
- Smooth Finished Drywall Ceilings
- European-Style Frameless Cabinets
- 16" O.C. Wall Construction with 2x6 Exterior Walls
- Many more amenity packages, options and selections
- These standards dramatically separate Master-Craft from the rest of the manufacturers competing in this market.

All Master-Craft collection plans will be backed by Ritz-Craft's award-winning tools and services, as well as our talented, in-house support departments. We're proud of this new, reimagined line of manufactured housing solutions and we are grateful for the opportunity to deliver you a Master-Craft home.

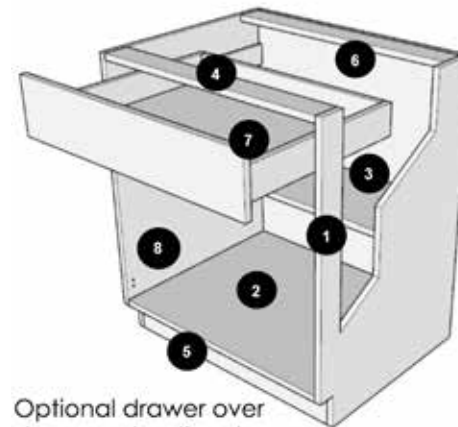


European Technology Meets American Craftsmanship

Legacy Crafted Cabinets, a member of the Ritz-Craft family of companies has created an entirely new line of cabinetry solutions for the Master-Craft collection of homes. The new Legato Cabinetry boasts an imaginative, frameless cabinet construction, as well as several value-added standards:

- Full-storage access
- Soft-close and self-close doors and drawers
- Adjustable base and overhead shelves with metal shelf clips
- Three standard colors, including white, gray, and a modern wood grain finish.

The look and functionality of cabinets helps create the heart of every home, and this new Legato Cabinetry by Legacy Crafted cabinets is proof that it is possible to promote affordability without sacrificing form or limiting function.



Optional drawer over door construction shown

Legato
CABINETS

Liberty Specifications Modular Series

EXTERIOR & CONSTRUCTION

- 30 lb. Roof Load
- 5/12 Nominal 24" OC
- Roof Sheathing 7/16" OSB w/ H-Clips
- Architectural Shingles
- Overhangs: 8" Front & Rear (Fixed), 8" on Gable Ends
- Exterior Walls: 2x6 at 16" O.C.
- Sidewall & Endwall Sheathing: 7/16 OSB
- Floor Joists: 2x10 at 16" O.C.
- Decking: 19/32" OSB
- White Drip Edge, Soffit, and Fascia
- Siding: 4/4 Shiplap
- Frost Proof Faucet: One Shiploose
- House Wrap: Standard
- Shutters: 15" on Front Door Side of Home
- Windows: Low E/Argon Gas Filled White Single Hung Vinyl Window
- Front Door- 3/0x6/8 FBGL Front Door w/ Peep and Wood Jambs
- Rear Door- 3/0x6/8 FBGL Door w/ Wood Jambs
- Exterior Locksets: Nickel
- Exterior Deadbolts: Nickel
- Exterior Light: Front/Rear Door, Patio Door - Per Plan

INSULATION

- Ceiling Insulation: R-30
- Exterior Walls: R-19

INTERIOR

- Interior Partitions: 24" O.C.
- Walls: 1/2" Drywall Smooth
- 8' Sidewall w/ Smooth Flat Ceiling
- Carpet Pad: 3/8" Rebond (5lb)
- Vinyl Floor Coverings in Wet Areas
- Carpet: 16oz
- Interior Doors: White 2—Panel Raised Square w/3 Mortised hinges
- 2/6 T/O (3/0 Per Plan)
- Furnace Door: White 2-Panel Door w/Grille
- Interior Molding: 2" Case
- Base Molding: 3-1/4"
- 3-5/8" Crown Molding T/O
- Wire Shelves: Closet, Pantry, Linen
- Wire Shelf Over Washer/Dryer Area
- Interior Locksets: Nickel
- Privacy Locks: Bath Doors
- Ceiling Light: LEDs in Hall, WIC, Utility, and Pantry
- Switched Recepts Bedrooms
- Hanging Light—Dining/Breakfast Areas

KITCHEN

- Wire & receptacle for Range: 220V
- 36" Stainless Steel Chimney Style Range Hood
- Dishwasher: Prep for Dishwasher
- Countertop: Laminate
- Backsplash: Matching Laminate
- Edging: Square Edge
- Kitchen: 6" Stainless Steel Double Bowl
- Cabinets: Legato Series Cabinets from Legacy Crafted Cabinets
 - 30" Wall Cabinets Standard with Crown
 - Soft/Self Close Adjustable Hinge Cabinet Doors/Drawers
 - Adjustable Shelves
 - Extra Deep Drawer Boxes w/ Opt Drawer over Door Available
- Kitchen Faucet—Single Lever Faucet -Chrome
- Standard Series Cabinet Pulls

BATHS

- Bath Vanity Faucet: Center-set Lav Faucets—Chrome
- Furniture Style Vanity—Master Bath
- Shower Faucet: Chrome
- Tub/Shower Faucet: Chrome
- Pencil Edge Mirrors
- Lav Bowls: Porcelain w/ Pop Up Drain Assembly
- Fiberglass tubs & showers per plan
- Elongated Porcelain Water Closets
- Vanity Lights: 2 Bulb (Nickel)
- Bath Vent Fans: Fan w/Light

UTILITIES

- Exterior GFCI Receptacle – 2 Standard
- Washer Hookup Wire & Plumb Washer/Dryer
- Wire for Dryer- 220v- w/ Standard Utility
- Exterior Dryer Vent Kit
- "Toggle" Switched T/O
- Thermostat
- 200 AMP Panel Box: Installed /White Metal Door
- Individual Shut Off Valves at Sinks & Toilets
- Central Water Shut Offs for Tubs and Showers
- HVAC—Boots and Floor Registers

MISCELLANEOUS

- Shingle over ridge vent

At Master-Craft we are constantly searching for new and better ways to build homes. We therefore reserve the right to change product specifications, plans & prices without notice and without incurring obligations.

Liberty DW Specifications

EXTERIOR & CONSTRUCTION

- 30 lb. Roof Load
- 3/12 (Nominal) Roof at 24" O.C.
- Roof Sheathing 7/16" OSB w/ H-Clips
- Architectural Shingles
- Overhangs: 8" Front & Rear (Fixed), 8" on Gable Ends
- Exterior Walls: 2x6 at 16" O.C.
- Sidewall & Endwall Sheathing: 7/16 OSB
- Floor Joists: 2x6 at 16" O.C.
- Decking: 19/32" OSB
- Porch Floor Decking: 5/4 x 6 Treated Lumber Decking - Per Plan
- Porch Railing: White Vinyl Porch Post & Rail System - Per Plan
- White Drip Edge, Soffit, and Fascia
- Siding: 4/4 Shiplap
- Frost Proof Faucet: One
- Shutters: 15" on Front Door side of Home
- Windows: Low E/Argon Gas Filled White Single Hung Vinyl Window
- Front Door- 3/0x6/8 FBGL Front Door w/ Peep and Wood Jamb
- Rear Door- 3/0x6/8 FBGL Door w/Wood Jamb
- Exterior Locksets: Nickel
- Exterior Deadbolts: Nickel
- Exterior Light: Front/Rear Door, Patio Door—Per Plan
- Recessed Spot w/Diffuser in Porch Ceiling

INSULATION

- Ceiling Insulation: R-30
- Exterior Walls: R-19
- Floor Insulation: R-22

INTERIOR

- Interior Partitions: 16" O.C.
- Walls: 3/8" VOG (1/2 Smooth Drywall Optional in High Impact Areas or T/O)
- 8' Sidewall w/ Smooth/Flat
- Carpet Pad: 3/8" Rebond (5lb)
- Vinyl Floor Coverings in Wet Areas
- Carpet: 16oz
- Interior Doors: White 2—Panel Raised Square w/3 Mortised Hinges
- 2/6 T/O (3/0 Per Plan)
- Furnace Door: White 2-Panel Door w/Grille
- Interior Molding: 2" Case
- Interior Molding: 3-1/4" Base
- Crown Molding T/O
- 3-5/8" Crown Molding T/O
- Drapes/Mini Blinds Throughout
- Wire Shelves: Linens, Pantry, Closets
- Wire Shelf Over Washer/Dryer Area
- Interior Locksets: Nickel
- Privacy Locks: Bath Doors
- Ceiling Light: LEDs in Hallway, Utility, WIC, Pantry per Plan
- Switched Receptacle Bedrooms
- Hanging Light—Dining/Breakfast Areas

KITCHEN

- Wire & receptacle for Range: 110V
- Appliance Package—Stainless Steel
 - 36" Stainless Steel Chimney Style Range Hood
 - Gas Range
 - 18 Cubic Ft Refrigerator
 - Dishwasher Optional (Cabinet Standard)
- Countertop: Laminate
- Backsplash: Matching Laminate
- Edging: Square Edge- Matching Laminate
- Kitchen: 6" Stainless Steel Double Bowl
- Cabinets: Legato Series Cabinets from Legacy Crafted Cabinets
- 30" Wall Cabinets Standard with Crown
- Soft/Self Close Adjustable Hinge Cabinet Doors/Drawers
- Adjustable Shelves
- Extra Deep Drawer Boxes w/ Drawer over Door Option Available
- Kitchen Faucet—Single Lever Kitchen Faucet-Chrome
- Standard Series Cabinet Pulls

BATHS

- Bath Vanity Faucet: Center-set Lav Faucets-Chrome
- Furniture Style Vanity - Master Bath
- Shower Faucet: Chrome
- Tub/Shower Faucet: Chrome
- Pencil Edge Mirrors
- Lav Bowls: Porcelain w/ Pop Up Drain Assembly
- 1-Piece Fiberglass Tub/Shower Per Plan
- 1 Piece Fiberglass Shower Per Plan
- Elongated Porcelain Water Closet
- Vanity Lights: 2 Bulb (Nickel)
- Bath Vent Fan: Fan w/Light

UTILITIES

- Exterior GFCI Receptacle – 1 Standard
- Washer Hookup Wire & Plumb Washer/Dryer
- Wire for Dryer- 220AMP
- Exterior Dryer Vent Kit
- "Toggle" Switched T/O
- Thermostat
- 100 AMP Panel Box: Installed /White Metal Door
- Water Heater: 30 Gallon Electric- Installed
- Installed Drain Pan w/PVC Drain Under Water Heater
- Individual Shut Off Valves
- Central Water Shut Offs at Sinks and Toilets
- Furnace: Gas
- Insulated Heat Duct w/ Perimeter Floor Registers
- Ventilare III System

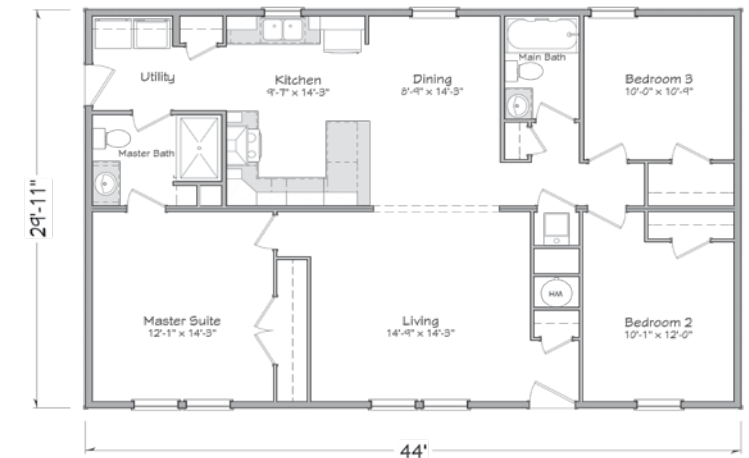
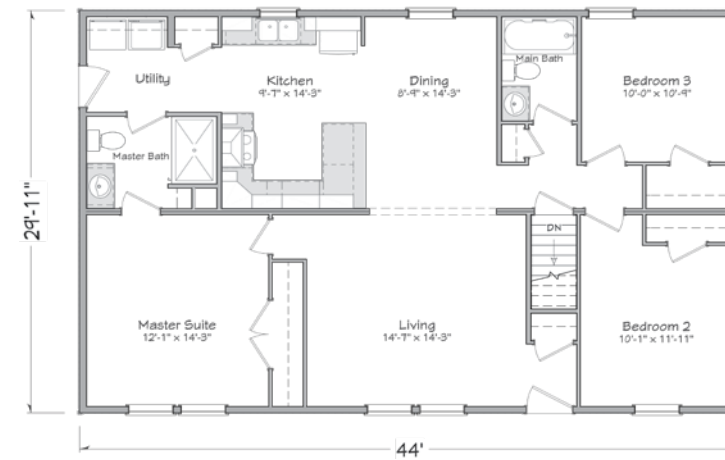
MISCELLANEOUS

- Shingle over ridge vent

At Master-Craft we are constantly searching for new and better ways to build homes. We therefore reserve the right to change product specifications, plans & prices without notice and without incurring obligations.

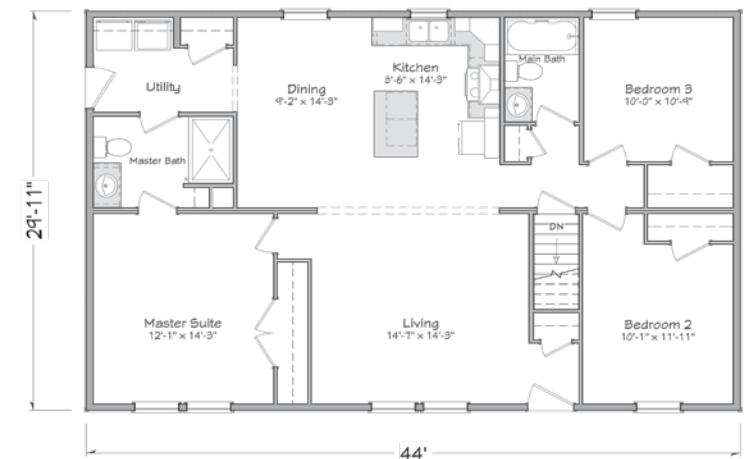
Dickenson

29'11" x 44'
1,316 Sq. Ft.
3 bedroom • 2 bath

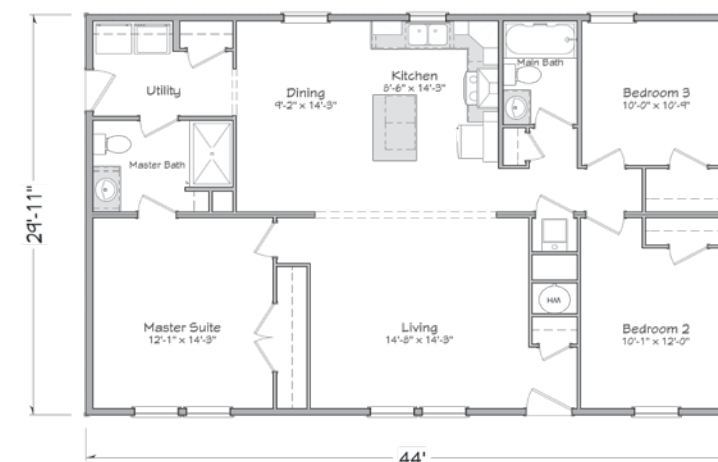


Baldwin

29'11" x 44'
1,316 Sq. Ft.
3 bedroom • 2 bath



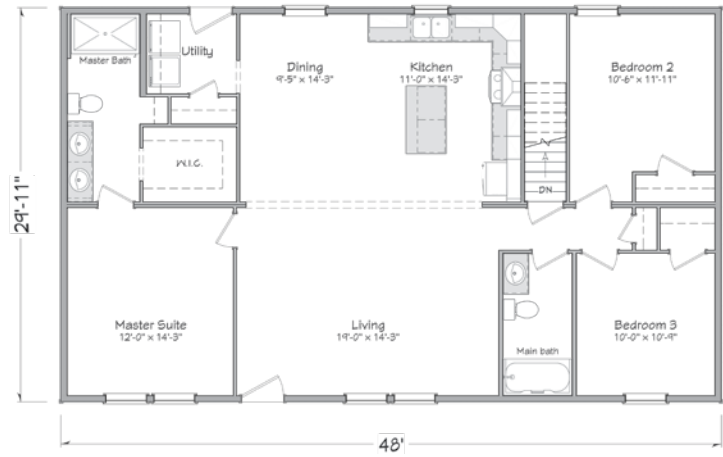
Crawl Space Plan



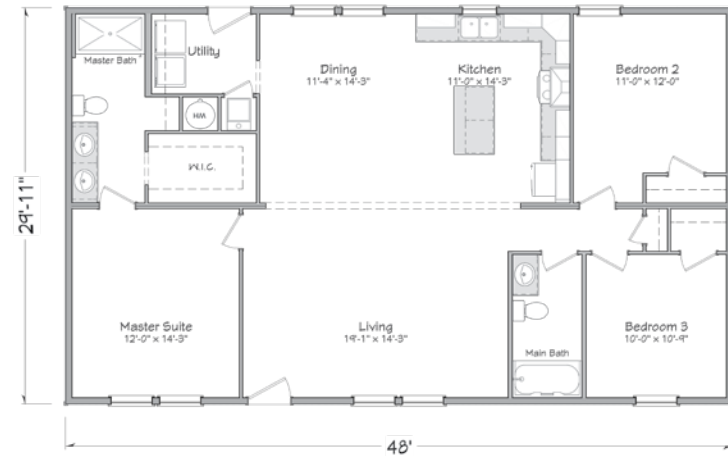
Basement Plan

Gorham

29'11" x 48'
1,436 Sq. Ft.
3 bedroom • 2 bath



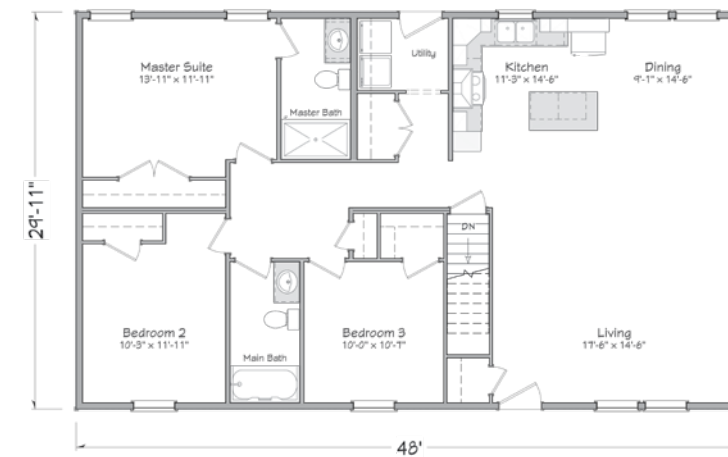
Basement Plan



Crawl Space Plan

Livingston

29'11" x 48'
1,436 Sq. Ft.
3 bedroom • 2 bath



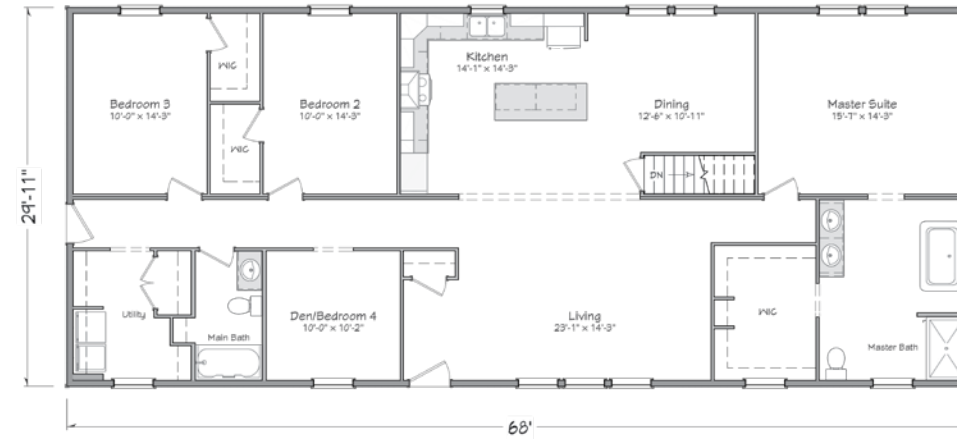
Crawl Space Plan

Basement Plan

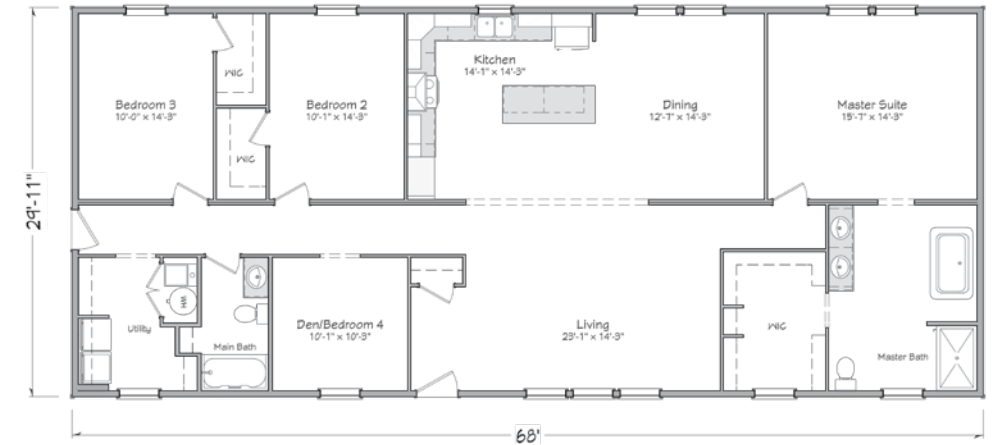


McHenry

29'11" x 68'
2,034 Sq. Ft.
4 bedroom • 2 bath



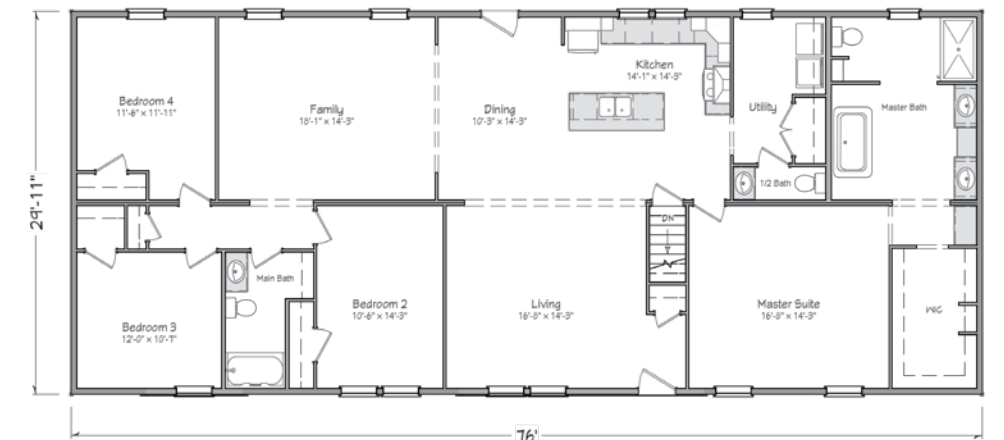
Basement Plan



Crawl Space Plan

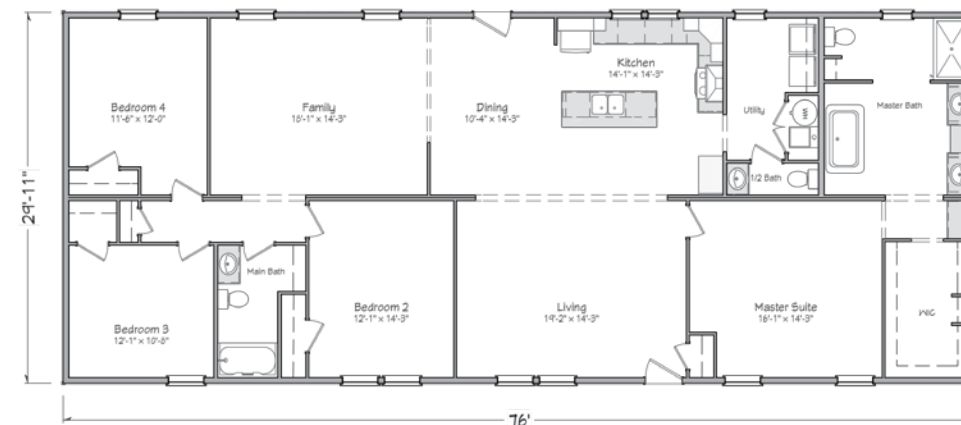
Ingersoll

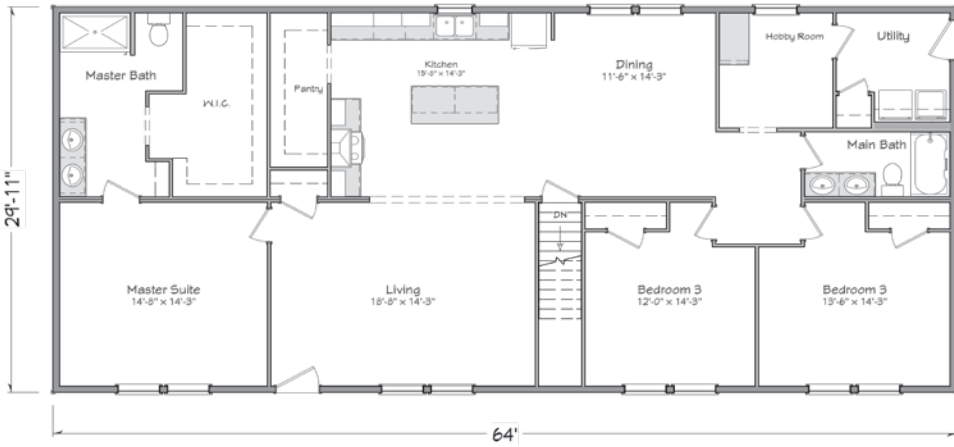
29'11" x 76'
2,274 Sq. Ft.
4 bedroom • 2.5 bath



Crawl Space Plan

Basement Plan

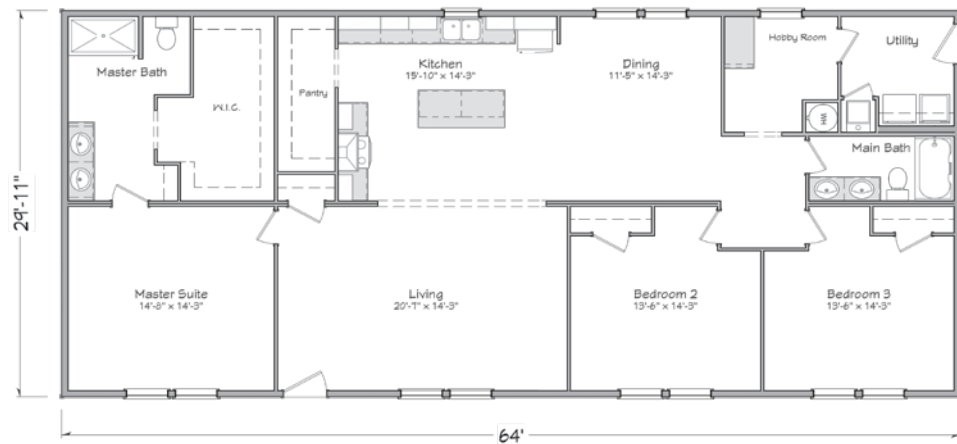




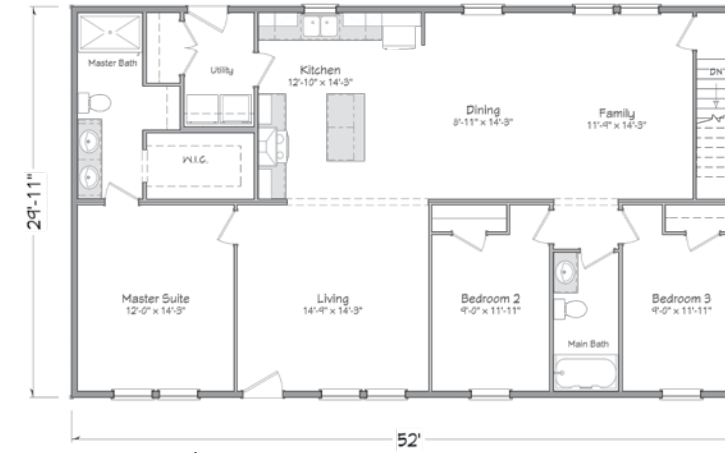
Basement Plan

Washington

29'11" x 64'
1,915 Sq. Ft.
3 bedroom • 2 bath



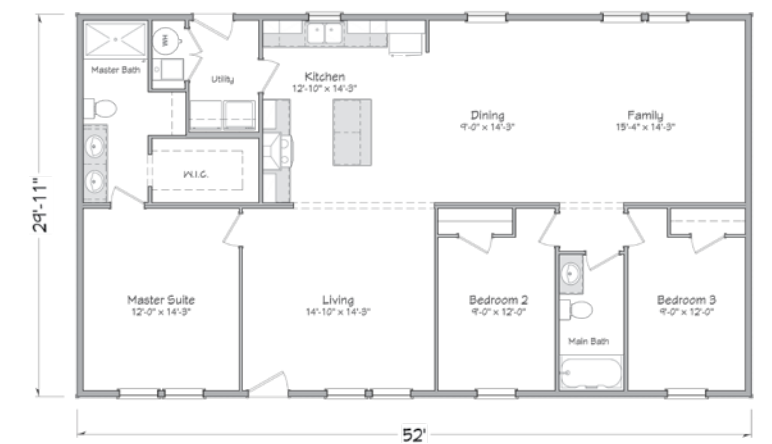
Crawl Space Plan



Basement Plan

Brearley

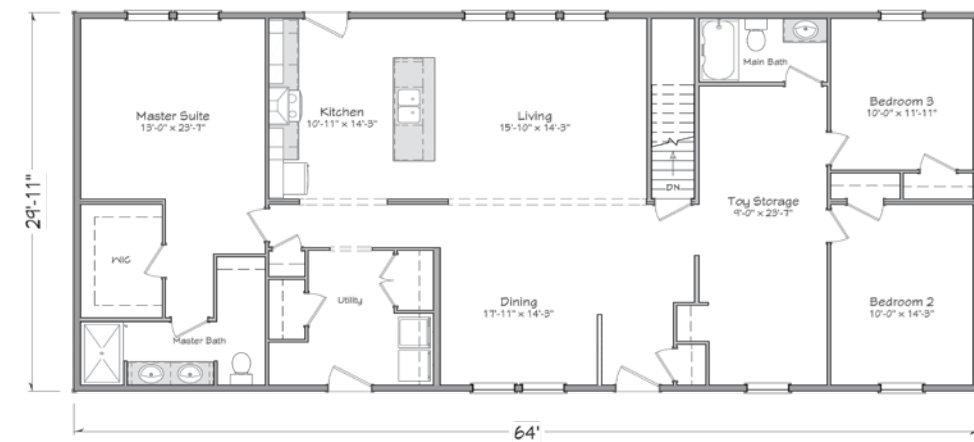
29'11" x 52'
1,556 Sq. Ft.
3 bedroom • 2 bath



Crawl Space Plan

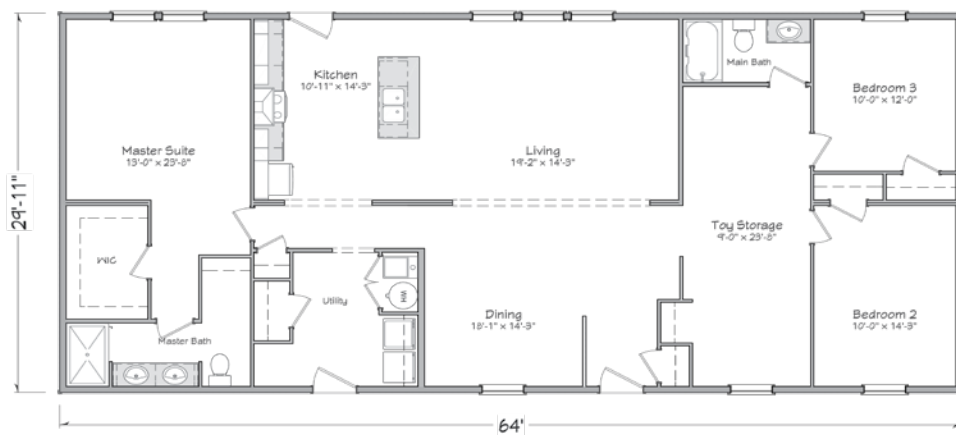
Rutledge

29'11" x 64'
1,915 Sq. Ft.
3 bedroom • 2 bath



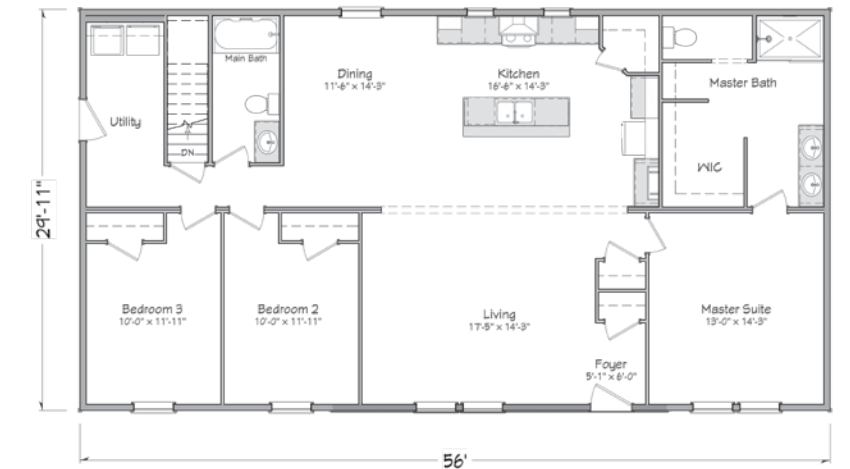
Basement Plan

Crawl Space Plan



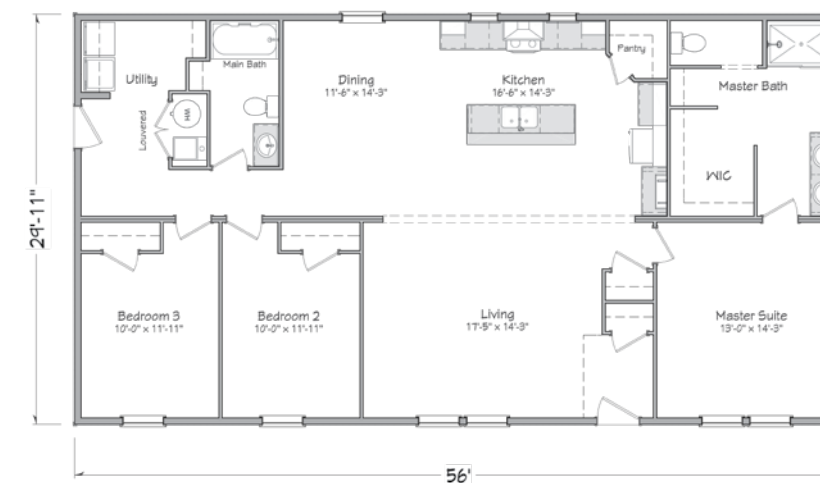
Langdon

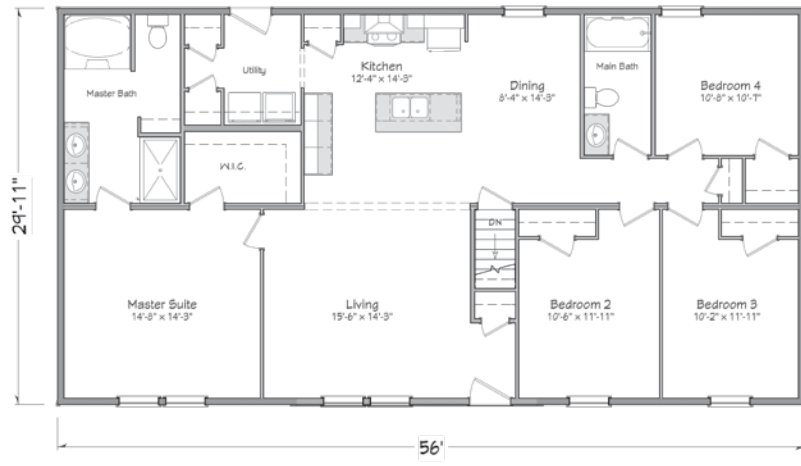
29'11" x 56'
1,675 Sq. Ft.
3 bedroom • 2 bath



Basement Plan

Crawl Space Plan

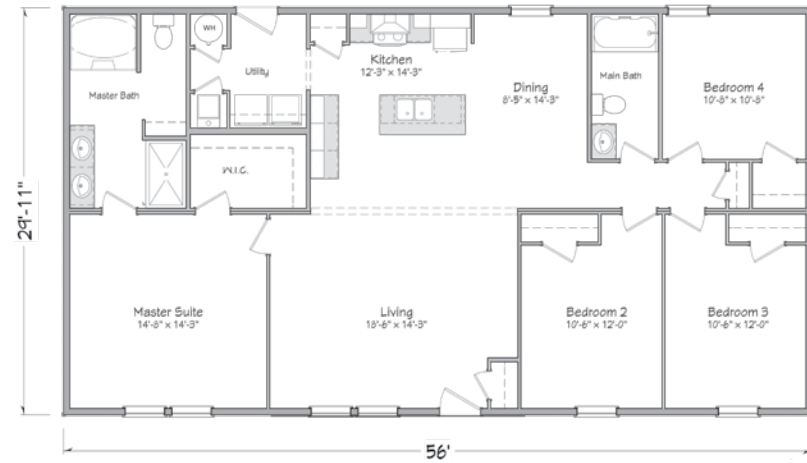




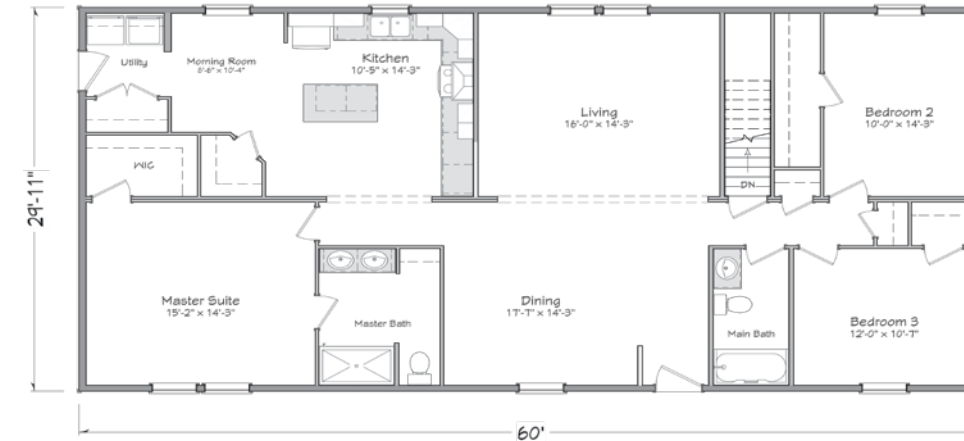
Basement Plan

Mifflin

29'11" x 56'
1,675 Sq. Ft.
4 bedroom • 2 bath



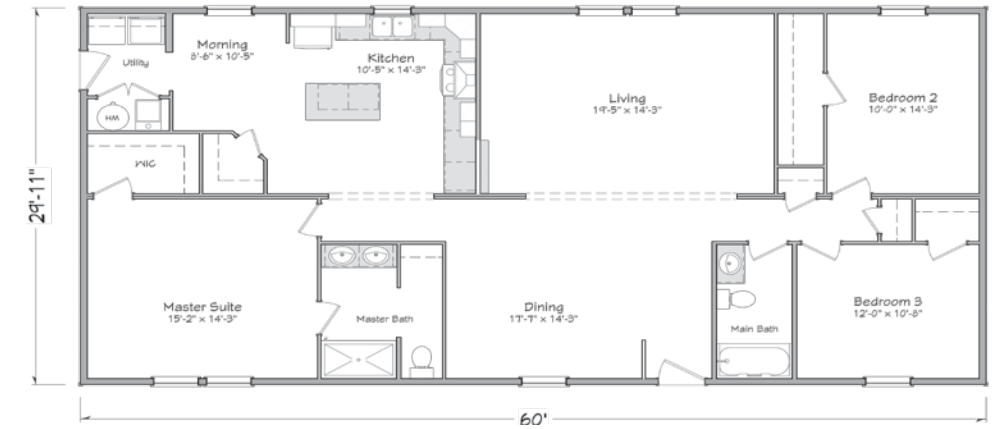
Crawl Space Plan



Basement Plan

Franklin

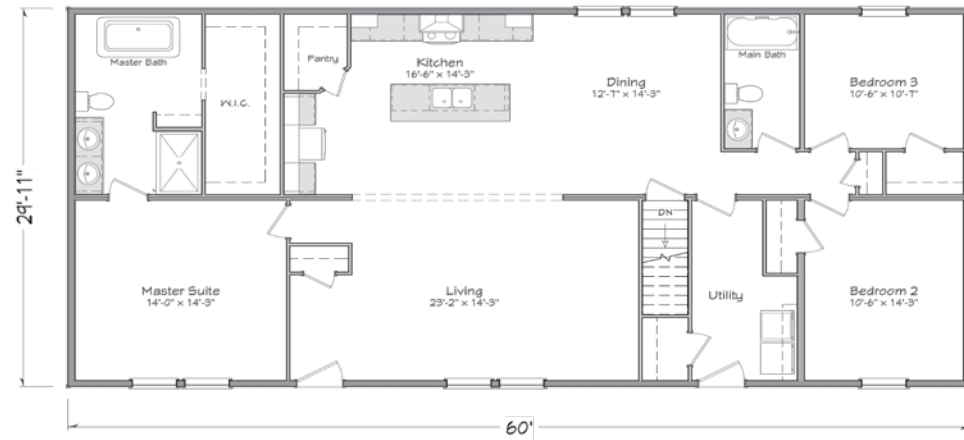
29'11" x 60'
1,795 Sq. Ft.
3 bedroom • 2 bath



Crawl Space Plan

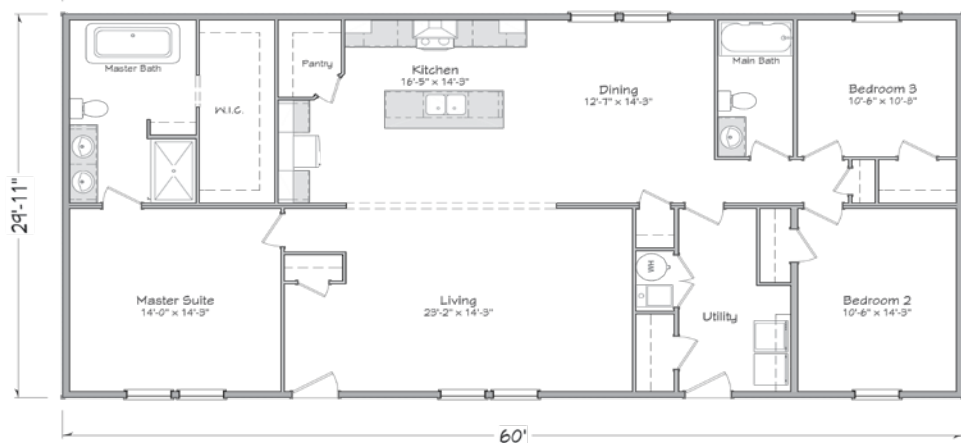
Morris

29'11" x 60'
1,795 Sq. Ft.
3 bedroom • 2 bath



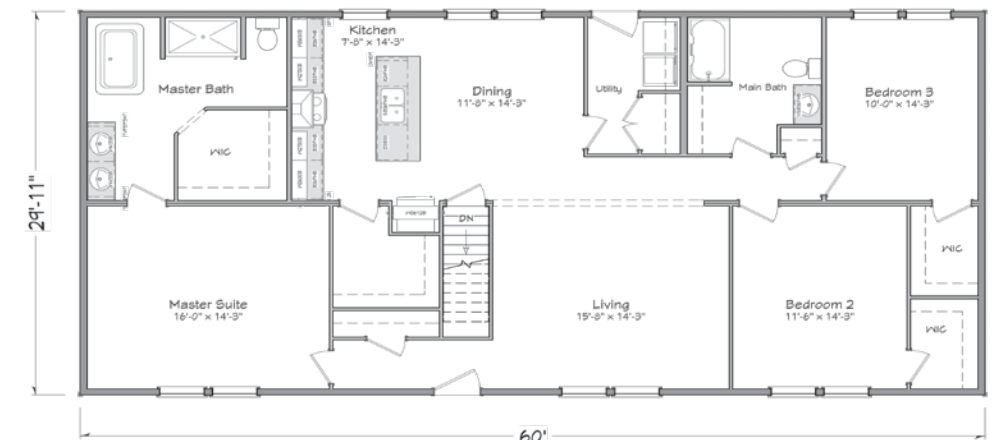
Basement Plan

Crawl Space Plan



Madison

29'11" x 60'
1,795 Sq. Ft.
3 bedroom • 2 bath



Basement Plan

Crawl Space Plan

