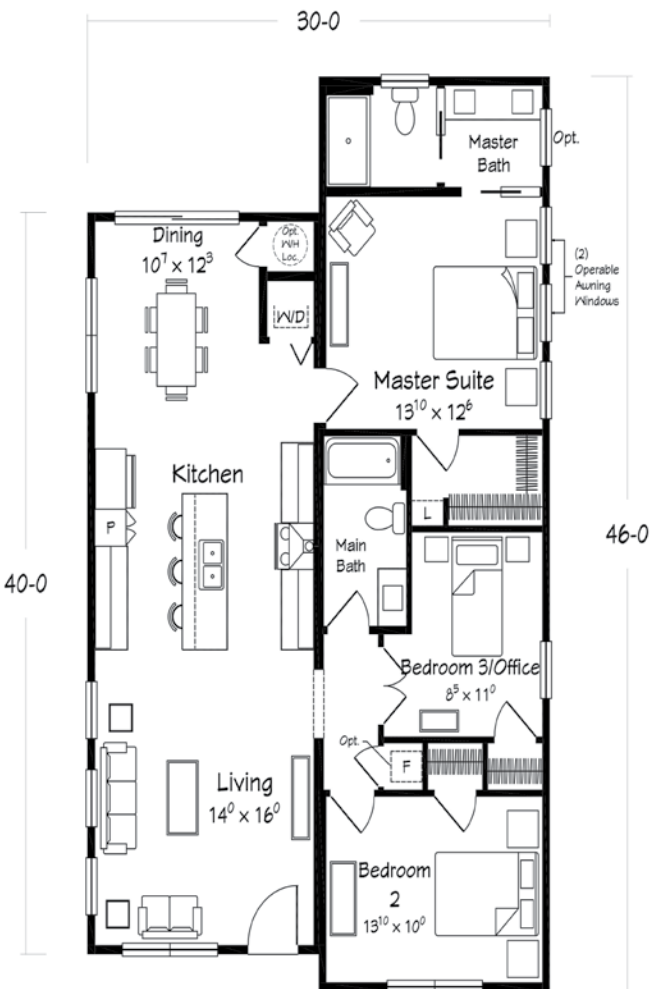


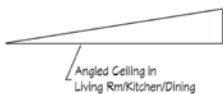
# MODERN LIVING SERIES

## ACCENT RANCH



3 bedrooms and 2 baths  
1,290 SQ. FT.

3/12/4.5/12 sawtooth roof pitch; angled ceilings in Living Room, Kitchen and Dining Room to add volume and style



Artists renderings depict buildings as can be built on a typical site. Rendering may include optional or site installed features. Refer to Ritz-Craft's Modern Living Benchmark Series Specifications for standard included features.

## ACCENT RANCH



- Angled ceilings throughout Living, Kitchen and Dining
- Large galley style kitchen with island/bar
- Open floorplan with kitchen open to adjacent dining and living areas
- All family areas face the rear yard

- Nicely sized bedrooms with plenty of closet space
- Large master bedroom with private bath featuring double bowl vanities and compartmented toilet/shower
- 60" shower base with tiled walls in master bath





# MODERN LIVING SERIES

## ARIES TWO STORY

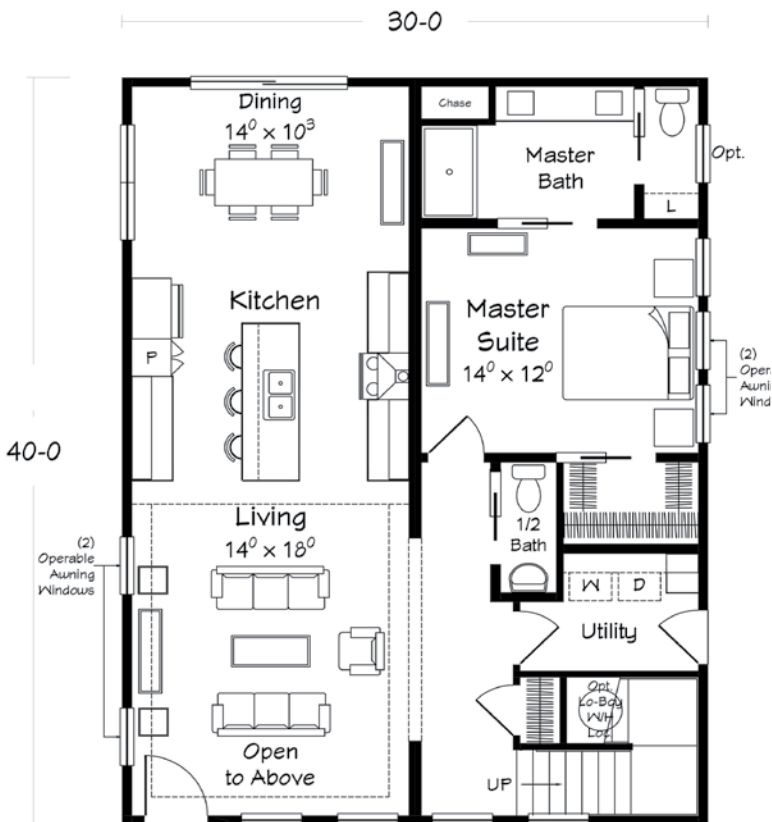


Shown with site added breezeway, garage and suspended entry roof.

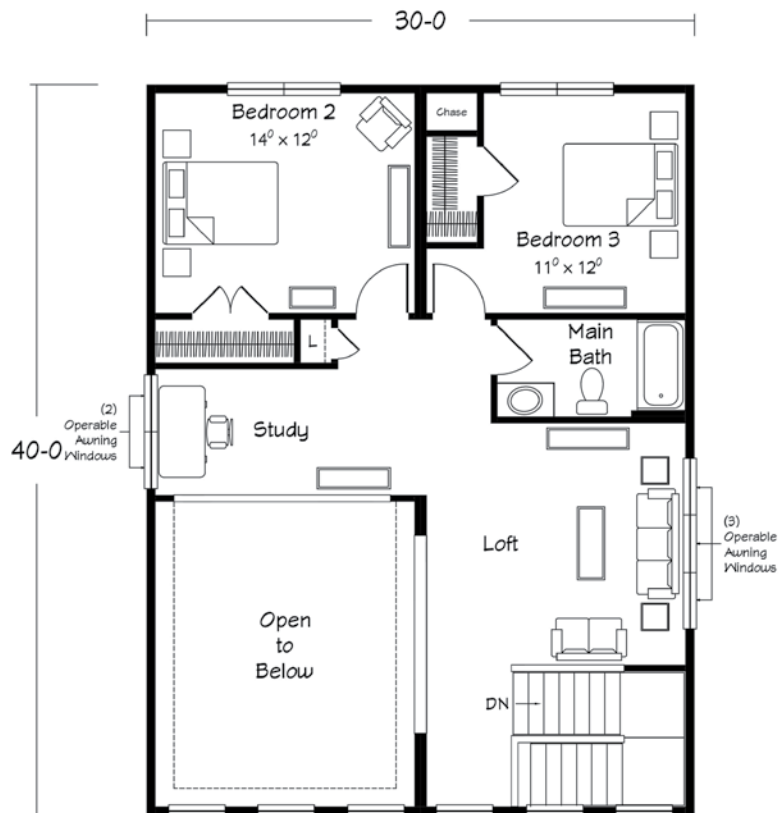


3 bedrooms and 2.5 baths • 2,148 SQ. FT.

3/12/4.5/12 sawtooth roof pitch; vaulted ceilings in Living Room. Open loft style floorplan.



First Floor



Second Floor

Artists renderings depict buildings as can be built on a typical site. Rendering may include optional or site installed features. Refer to Ritz-Craft's Modern Living Benchmark Series Specifications for standard included features.

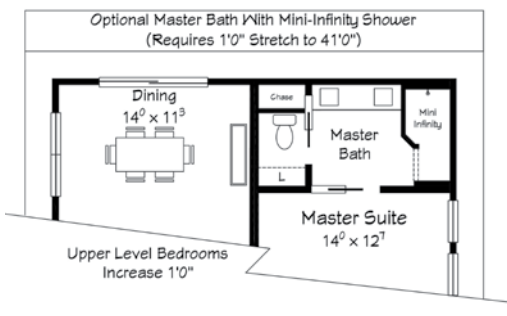


# ARIES TWO STORY



- 2-Story vaulted ceiling in Living Room
- Large galley style kitchen with island/bar
- Open floorplan with kitchen open to adjacent dining and living areas
- All family areas face the rear yard

- Nicely sized bedrooms with plenty of closet space
- Large master bedroom with private bath featuring double bowl vanities, private toilet area and 60" shower base with tiled walls



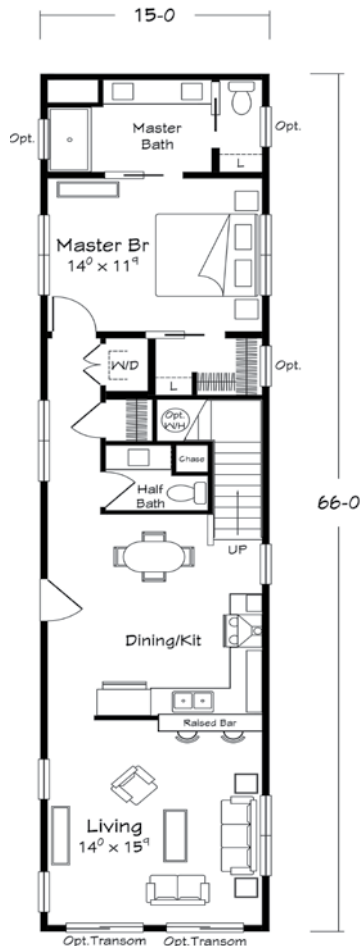
# MODERN LIVING SERIES

## AXIOS TWO STORY

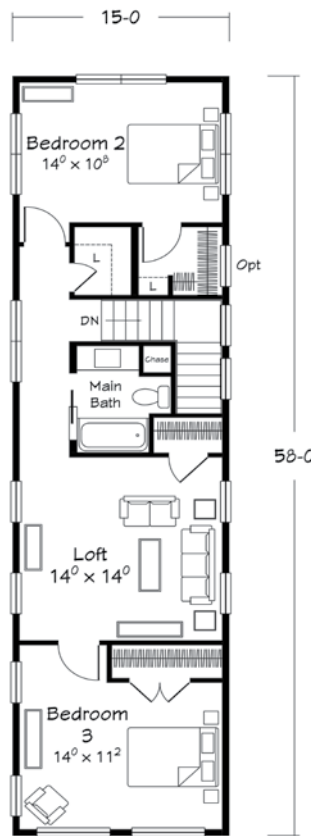


Shown with site added breezeway, garage and front porch

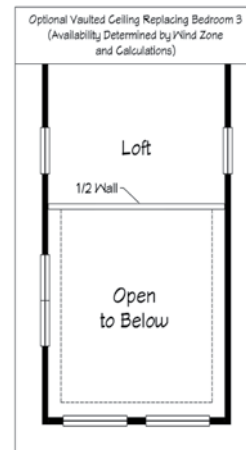
3 bedrooms and 2.5 baths  
1,860 SQ. FT.  
Shed Roof



First Floor



Second Floor



Artists renderings depict buildings as can be built on a typical site. Rendering may include optional or site installed features. Refer to Ritz-Craft's Modern Living Benchmark Series Specifications for standard included features.

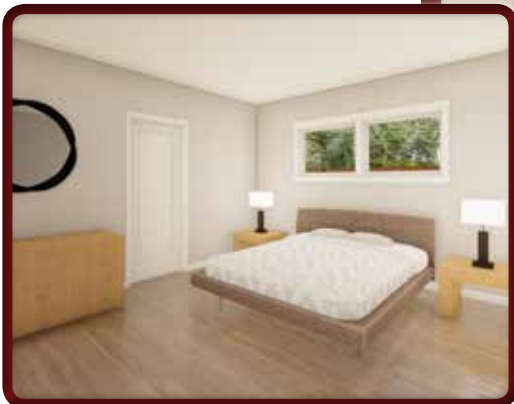


## AXIOS TWO STORY



- Large galley style kitchen with island/bar
- Open floorplan with kitchen open to adjacent dining and living areas
- Optional vaulted ceiling over Living Room

- Nicely sized bedrooms with plenty of closet space
- Large master bedroom with private bath featuring double bowl vanities and 60" shower base with tiled walls
- Toilet/linen compartment with pocket door in master bath





# JADE TREE RANCH



- Large galley style kitchen with island/bar
- Open floorplan with kitchen open to adjacent dining and living areas
- All family areas face the rear yard
- Angled ceiling with additional open wall cabinets on range side

- Nicely sized bedrooms with plenty of closet space
- Large master bedroom with private bath featuring double bowl vanities and 60" shower base with tiled walls
- Toilet/linen compartment with pocket door in master bath





# MODERN LIVING SERIES

## JASMINE TWO STORY



Shown with site added suspended entry roof.

3 bedrooms and 3 baths  
2,140 SQ. FT.  
3/12 & 4/12 Sawtooth Roof



First Floor

Artists renderings depict buildings as can be built on a typical site. Rendering may include optional or site installed features. Refer to Ritz-Craft's Modern Living Benchmark Series Specifications for standard included features.

## JASMINE TWO STORY



- Large galley style kitchen with island/bar
- Open floorplan with kitchen open to adjacent dining and living areas
- Large family room with sliding patio door
- All family areas face the rear yard

- Three full baths
- Nicely sized bedrooms with plenty of closet space
- Large master bedroom with private bath featuring double bowl vanities, private toilet area and 60" shower base with tiled walls
- Upper level study

