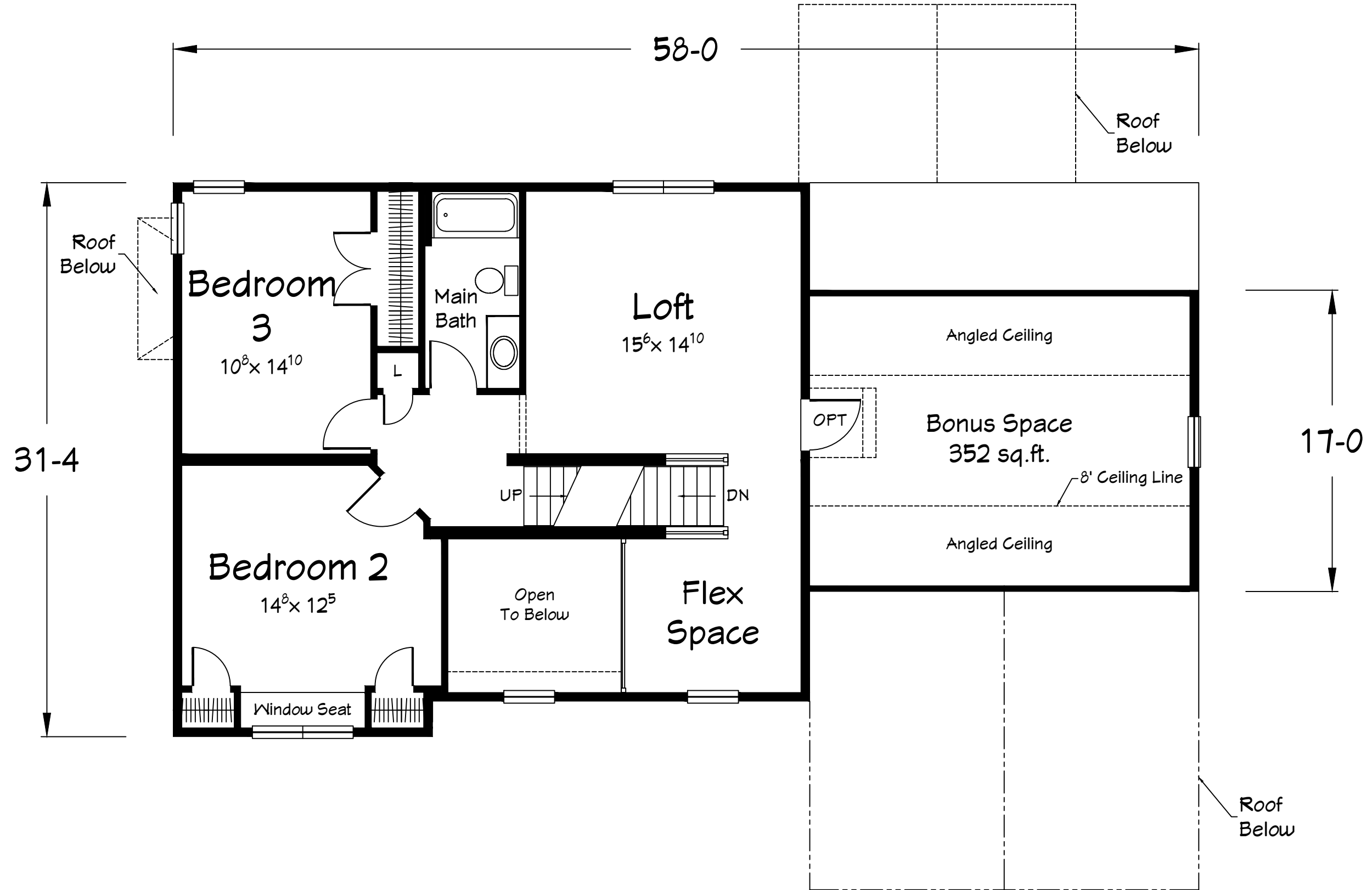


Virginia Building Solutions
 Model House
 1613 sq. ft. First Floor Living
 1085 sq. ft. Second Floor Living

DATE	REVISION / DESCRIPTION	BY	RITZ-CRAFT CORPORATION	STARTED:	3/21/12	DEALER:	VIRGINIA BUILDING SOLUTIONS	SCALE:	N. T. S.	CO #:	5089512
03/28	REVISIONS PER MARK-UPS	RM		TO SALES:		CUSTOMER:	GARRETT	DRAWN BY:	WM	SN:	0734
03/26	REVISIONS PER MARK-UPS	WM		SALES:		RC REP:	DWAYNE SHELL	BVT CUSTOM		SHEET #:	
03/26	REVISIONS PER MARK-UPS	WM		DATE:		STATE:	VA	1st FLOOR PLAN			3 OF 9.5
03/23	REVISIONS PER MARK-UPS	WM		CONFIRM COMPLETE:							
03/22	REVISIONS PER MARK-UPS	WM	PERMIT SET COMPLETE:								



DATE	REVISION / DESCRIPTION	BY
03/26	REVISIONS PER MARK-UPS	WM
03/26	REVISIONS PER MARK-UPS	WM
03/23	REVISIONS PER MARK-UPS	WM
03/22	REVISIONS PER MARK-UPS	WM

RITZ-CRAFT CORPORATION

STARTED: 3/21/12
 TO SALES:
 SALES:
 DATE:
 CONFIRM COMPLETE:
 PERMIT SET COMPLETE:

DEALER: VIRGINIA BUILDING SOLUTIONS
 CUSTOMER: GARRETT
 RC REP: DWAYNE SHELL
 STATE: VA

SCALE: 3/16"=1'-0"
 DRAWN BY: WM
 BVT CUSTOM
 2nd FLOOR PLAN

CO #: 5089512
 SN: 0734
 SHEET #: 3.1 OF 9.5